

Instrument panel

Instrument panel (with cross member), removing and installing

1 - Cap for instrument panel (2x)

- ◆ Unclip cap

2 - Bolt (4x)

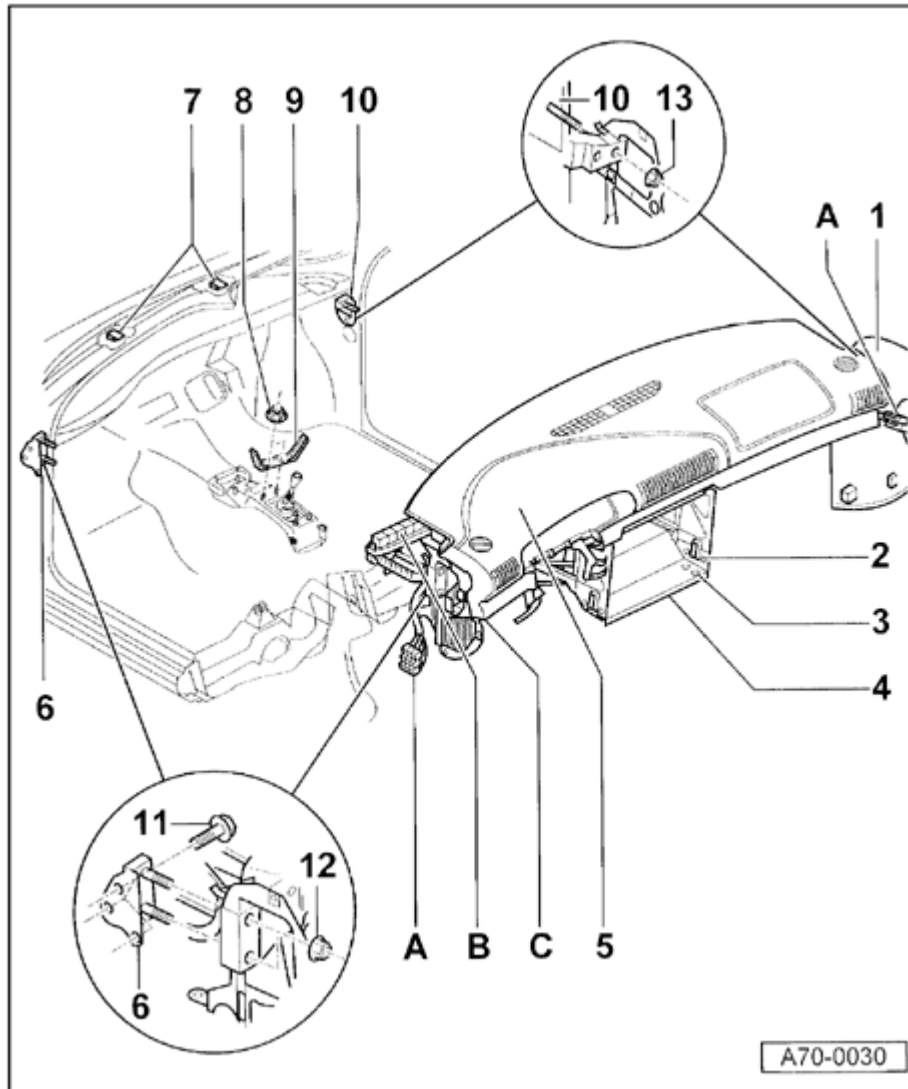
- ◆ 12 Nm (9 ft lb)

3 - Bolt (4x)

- ◆ 12 Nm (9 ft lb)

4 - Bracket

- ◆ Remove bolts -2- and -3-.



5 - Instrument panel with cross member

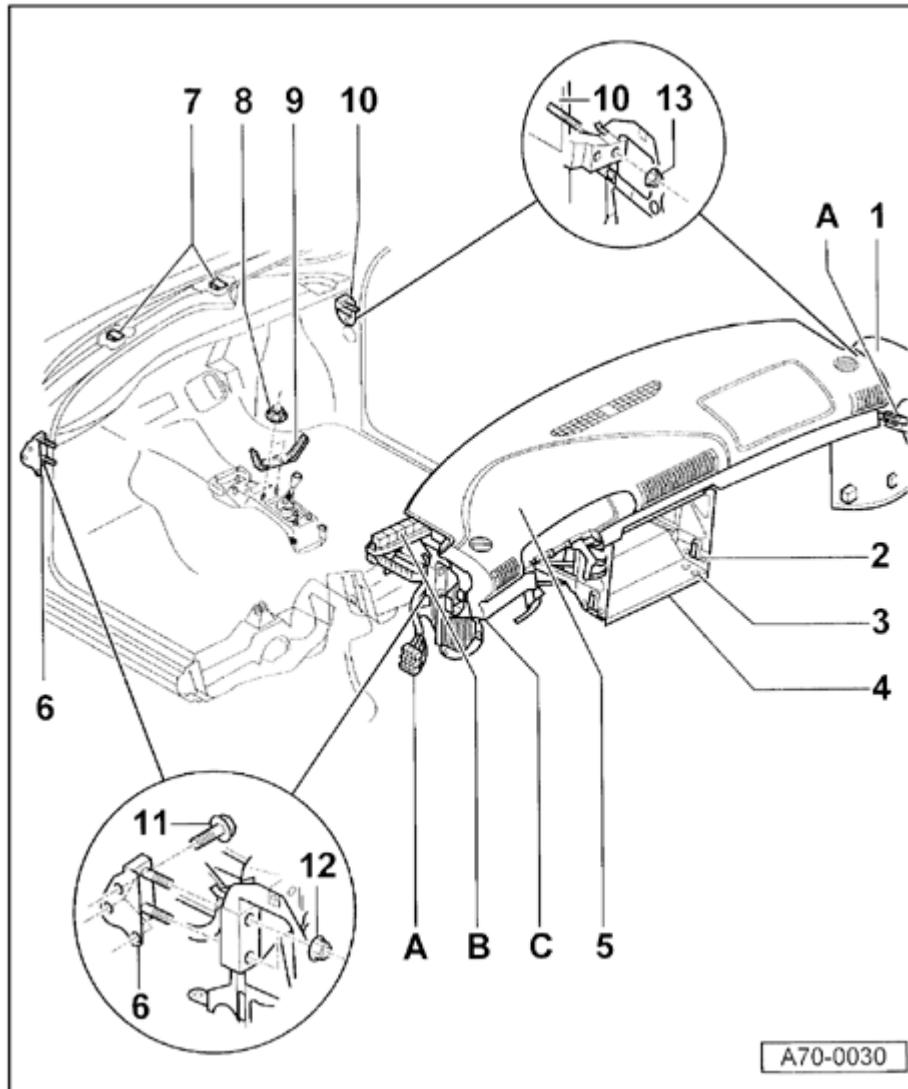
Removing:

- Position windshield wipers to upper-most position.
- Remove steering column brace ⇒ [Fig. 2](#).
- Remove steering wheel ⇒ [page 69-57](#).
- Remove driver-side airbag unit ⇒ [page 69-54](#).
- Remove driver-side knee bolster ⇒ [page 68-8](#).
- Remove passenger-side knee bolster ⇒ [page 68-1](#).
- Remove rear center console ⇒ [page 68-13](#).
- Remove front center console ⇒ [page 68-30](#).
- Remove instrument panel center piece ⇒ [page 68-31](#).
- Remove airbag control module ⇒ [page 69-74](#).
- Disconnect left and right-rear heating ducts in floor well.
- Disconnect coolant hoses and A/C lines (evacuate refrigerant).

⇒ [Repair Manual, Heating & Air Conditioning, Repair Group 87](#)

- Remove rubber grommet.
- Remove lower A-pillar trim ⇒ [page 70-72](#) .

70-42



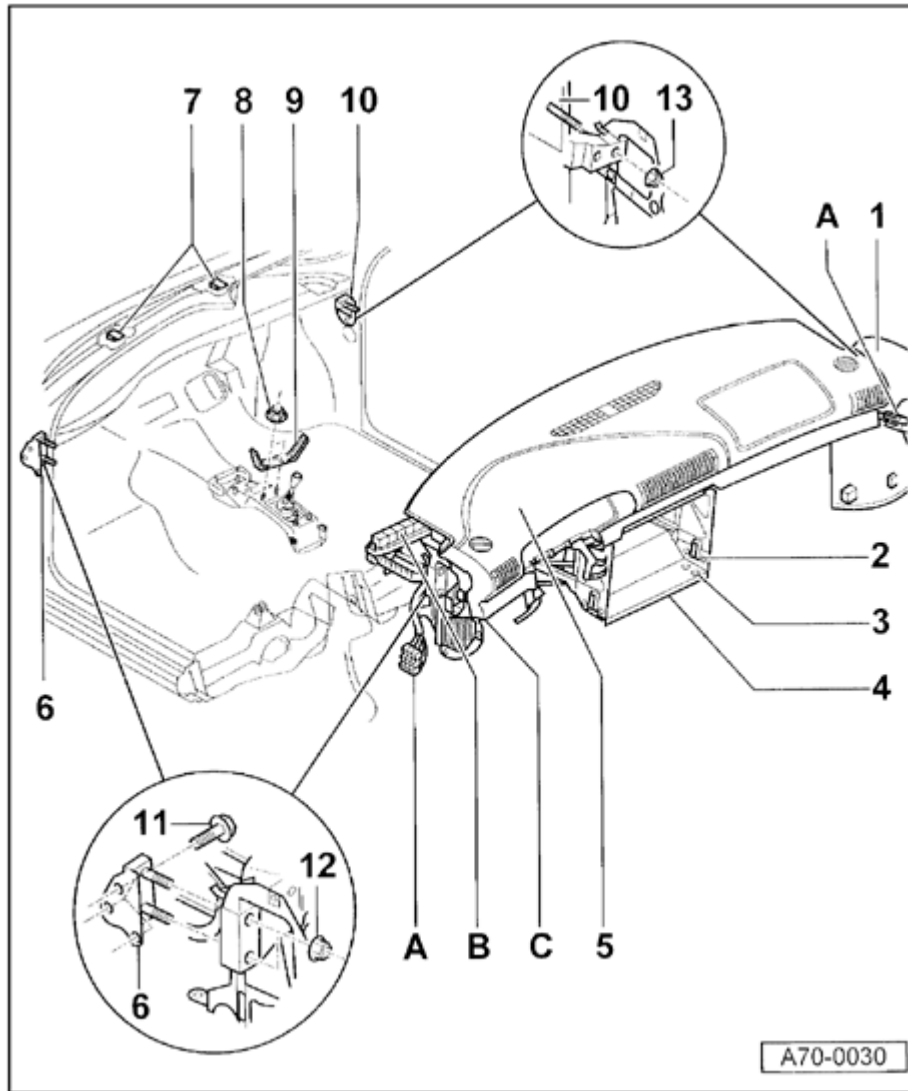
- Disconnect wiring at connector stations in left and right A-pillars (item -A-).
- Disconnect electrical harness connectors in item -B-.

⇒ [Repair Manual, Electrical Equipment, Repair Group 97.](#)

- Disconnect positive wiring at relay station (item -C-).
- Disconnect negative connection (item -C-).
- Disconnect wiring in area of center tunnel.
- Disconnect electrical and vacuum connections for brake light switch and cruise control system at pedal assembly.
- Remove bolts -2- and -3- as well as bracket -4-.
- Remove nuts -8- and bracket -9-.
- Disconnect pedal assembly from instrument panel cross member ⇒ [Fig. 1](#).
- Disconnect lower part of steering column from steering gear and secure ⇒ [Fig. 1](#).
- Remove nuts -12- and -13-.

- Cover both seats to protect them from damage.
- Pull instrument panel forward and pull out clips -7- with help from second technician.

70-43



Installing:

- ◆ Installation is the reverse of removal

Adjusting:

- ◆ Instrument panel with cross member must be centered in vehicle

6 - Angle bracket

- ◆ With felt base

7 - Retaining clip (2x)

8 - Nut (2x)

9 - Bracket

10 - Angle bracket

11 - Bolts (5x)

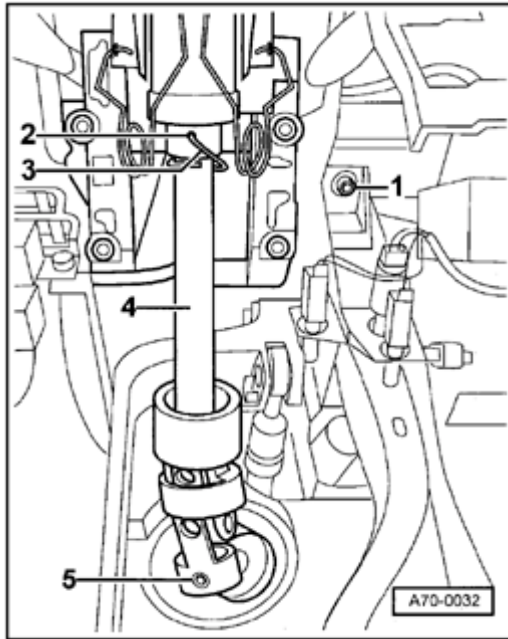
- ◆ Left-side (3x)
- ◆ Right-side (2x)
- ◆ 23 Nm (17 ft lb)

12 - Nut (2x)

- ◆ 45 Nm (33 ft lb)

13 - Nut (2x)

- ◆ 45 Nm (33 ft lb)

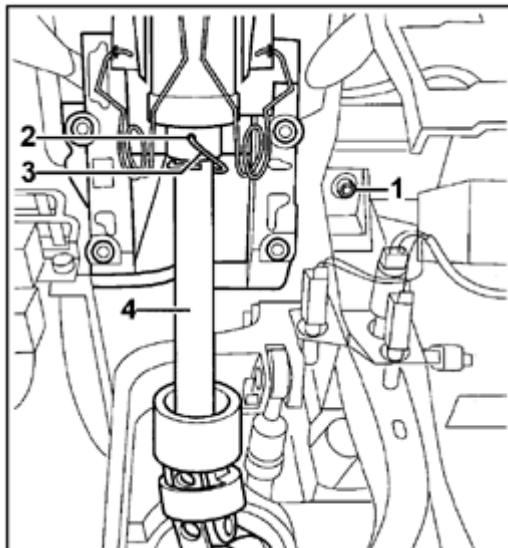


A

Fig. 1 Disconnecting pedal assembly

- Remove bolt -1-.

Tightening torque: 25 Nm (18 ft lb)



A

Removing lower section of steering column

- Remove bolt -5- and fold down joint.

Tightening torque: 40 Nm (30 ft lb)

Note:

The steering column joint can only be attached in one position when

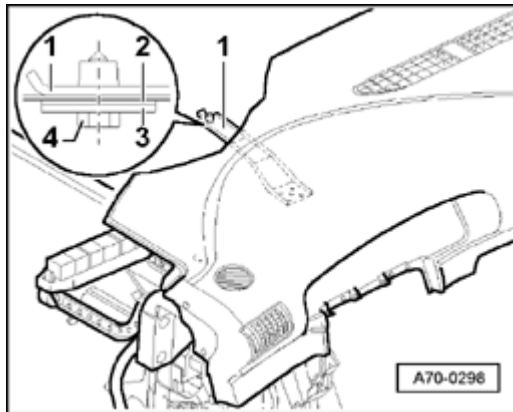
installing.

⇒ [Repair Manual, Suspension, Wheels, Steering, Repair Group 48.](#)

- Push back steering column (lower section) -4- until hole 2 in steering column (upper section) covers hole in steering column (lower section).
- Insert welding wire -3- in hole -2- and secure by wrapping once around steering column.

CAUTION!

Do NOT under any circumstances pull steering column -4- out completely or push it in completely (⇒ [Repair Manual, Suspension, Wheels, Steering](#)).



A

Fig. 2 Removing steering column brace**Note:**

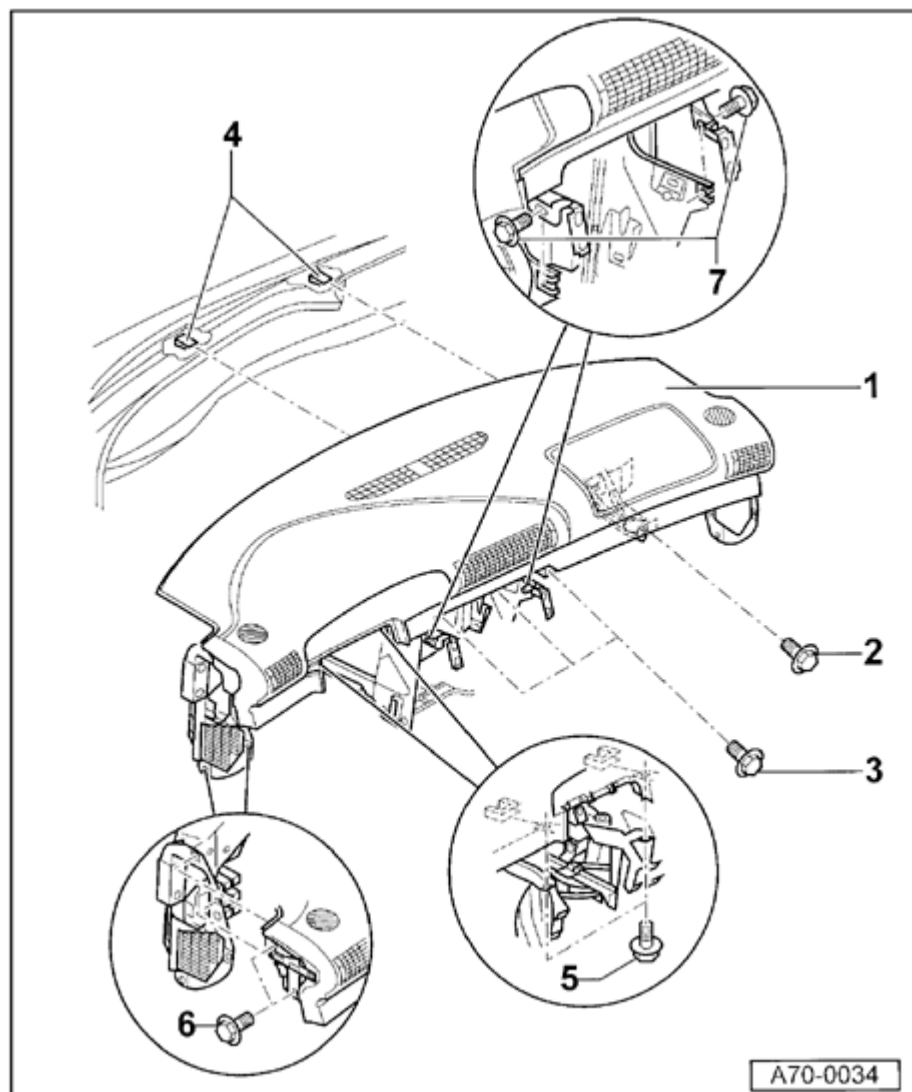
Steering column brace used 5/98 ➤; bolt for steering column brace is in the plenum panel, on the driver-side above the windshield wiper motor.

- Remove bolt -4-.

Tightening torque: 8 Nm (71 ft lb)

- Remove washer -3- and gasket -2-.

- If necessary when installing, use drift to align brace -1- to hole in bulkhead.



Instrument panel, removing and installing

1 - Instrument panel

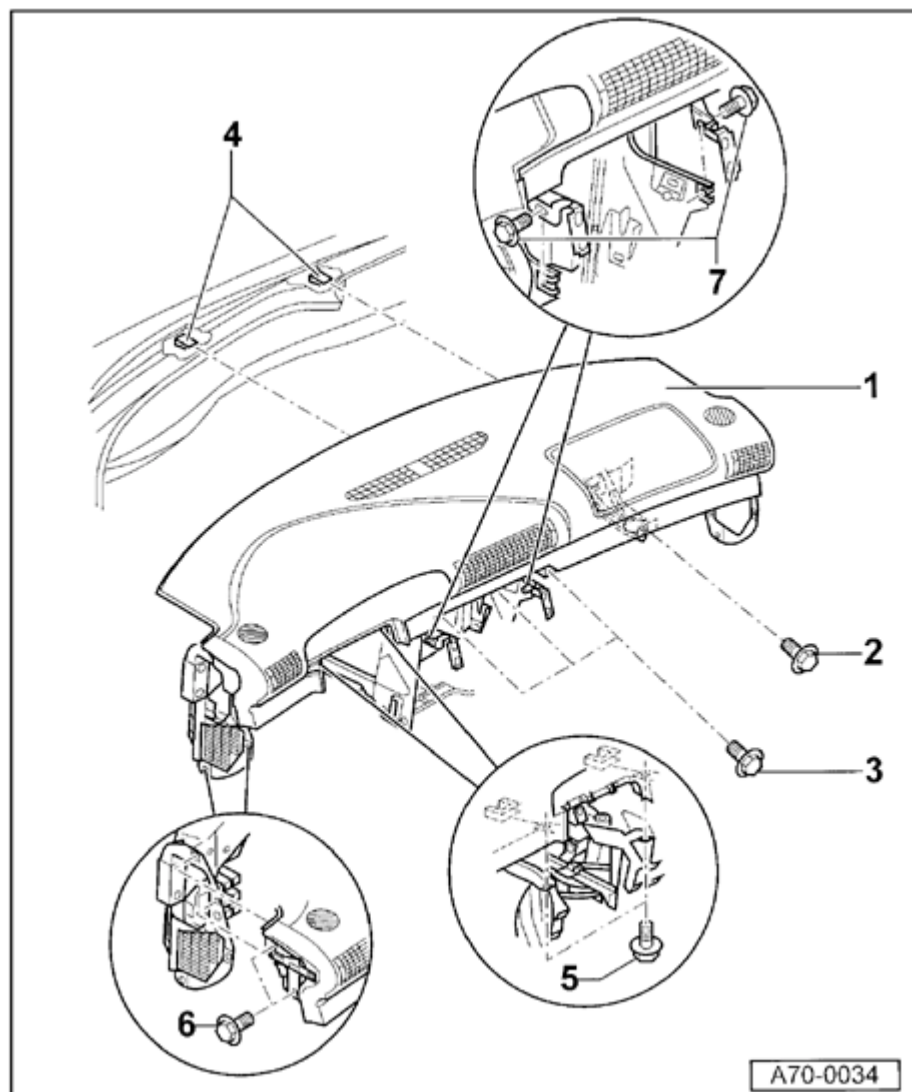
Removing:

- Remove driver-side knee bolster ⇒ [page 68-8](#) .
- Remove passenger-side knee bolster ⇒ [page 68-1](#) .
- Remove rear center console ⇒ [page 68-13](#) .
- Remove front center console ⇒ [page 68-30](#) .
- Remove instrument panel center piece ⇒ [page 68-31](#) .
- Remove driver-side airbag unit ⇒ [page 69-54](#) .
- Remove steering wheel ⇒ [page 69-57](#) .
- Remove passenger-side airbag unit ⇒ [page 69-70](#) .
- Remove steering column cover ⇒ [page 68-11](#) .
- Remove bolts -2-, -3-, -5-, -6-, and -7-.
- To remove, pull instrument panel out of brackets -4-.

Note:

Always replace instrument panel after passenger airbag has deployed.

70-47



Installing:

- ◆ Installation is the reverse of removal

Adjusting:

- ◆ Instrument panel must be centered in vehicle

2 - Bolt

- ◆ 5 Nm (44 ft lb)

3 - Bolts (3x)

- ◆ 5 Nm (44 ft lb)

4 - Brackets (2x)

- ◆ With felt base

5 - Bolts (2x)

- ◆ 5 Nm (44 ft lb)

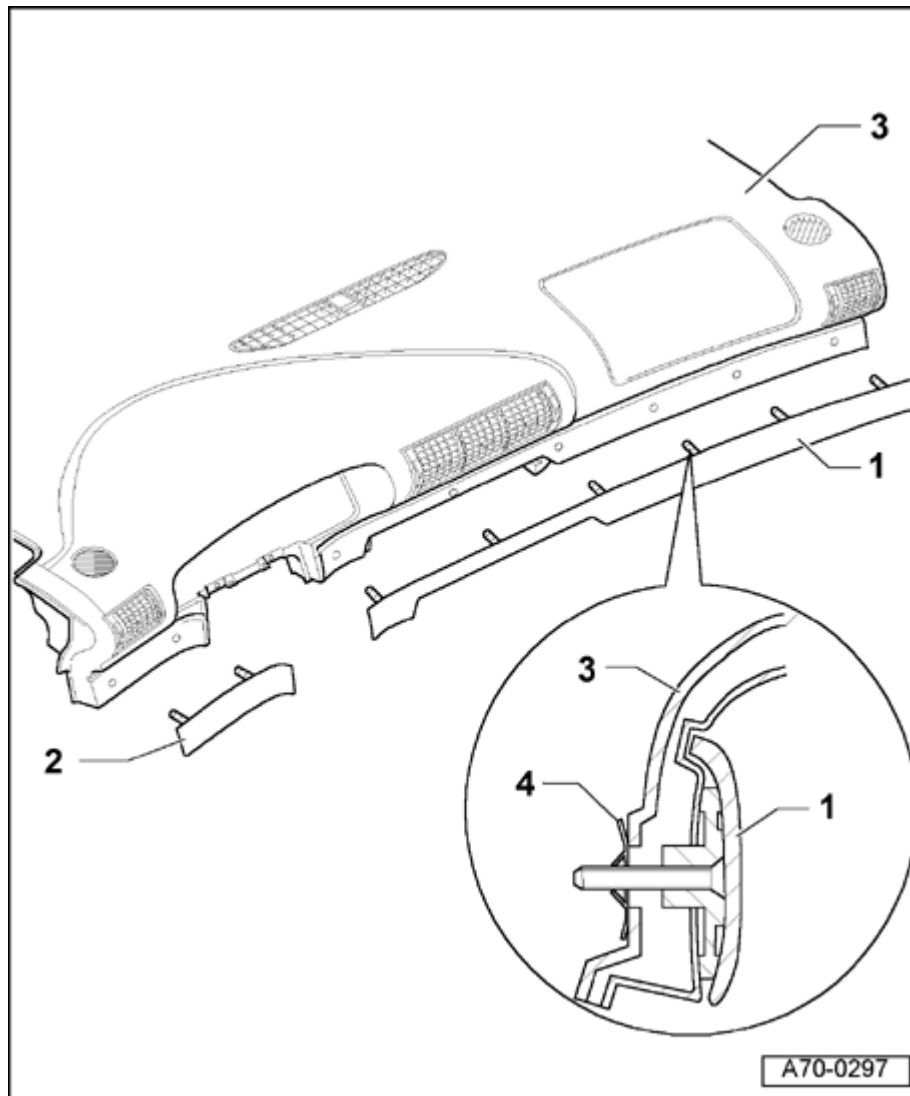
6 - Bolts (2x)

- Remove bolts on left and right-side of instrument panel.

- ◆ 5 Nm (44 ft lb)

7 - Bolts (2x)

- ◆ 5 Nm (44 ft lb)



Instrument panel trim, removing and installing

1 - Trim, passenger-side

- Remove driver-side knee bolster ⇒ [page 68-8](#) .
- Remove passenger-side knee bolster ⇒ [page 68-1](#) .
- Remove rear center console ⇒ [page 68-13](#) .
- Remove front center console ⇒ [page 68-30](#) .
- Remove instrument panel center piece ⇒ [page 68-31](#) .
- Remove clips -4- using screwdriver.

2 - Trim, driver-side

- Remove driver-side knee bolster ⇒ [page 68-8](#) .
- Remove clips -4- using screwdriver.

3 - Instrument panel

4 - Clip