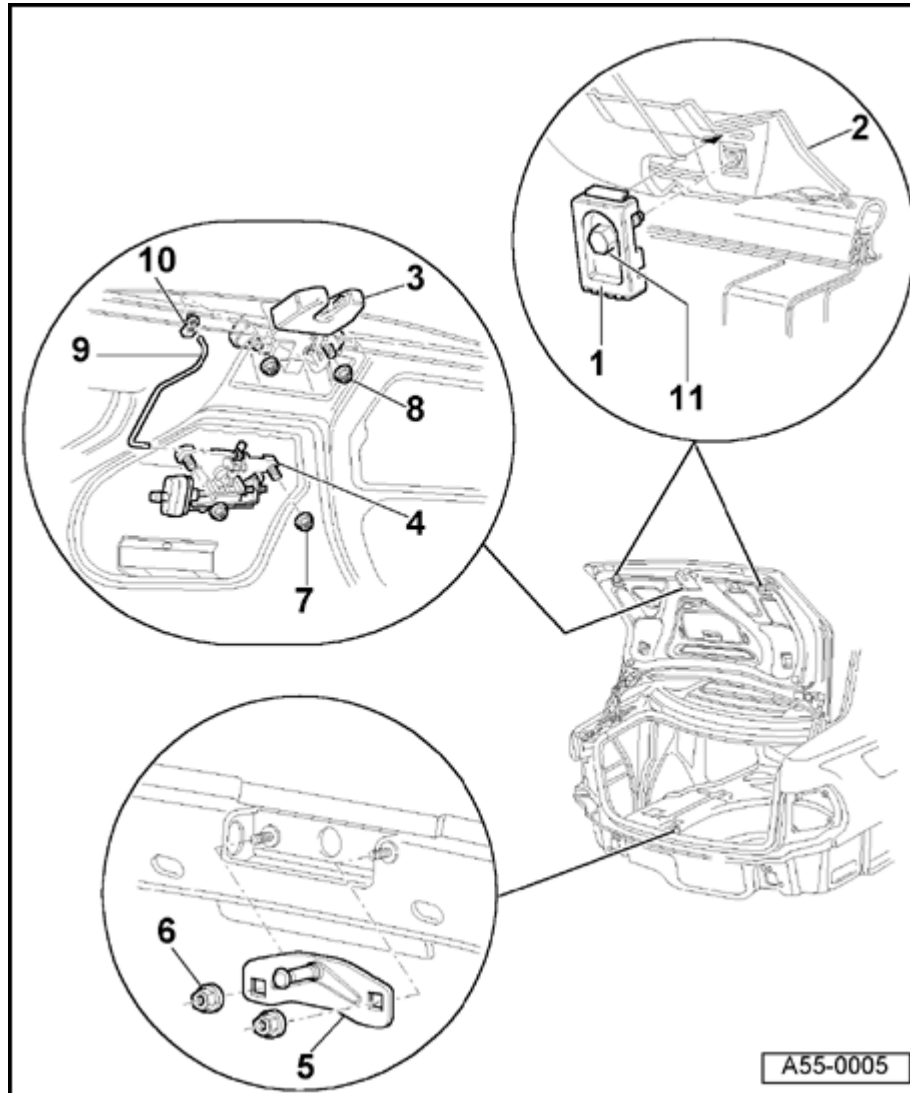


55-12



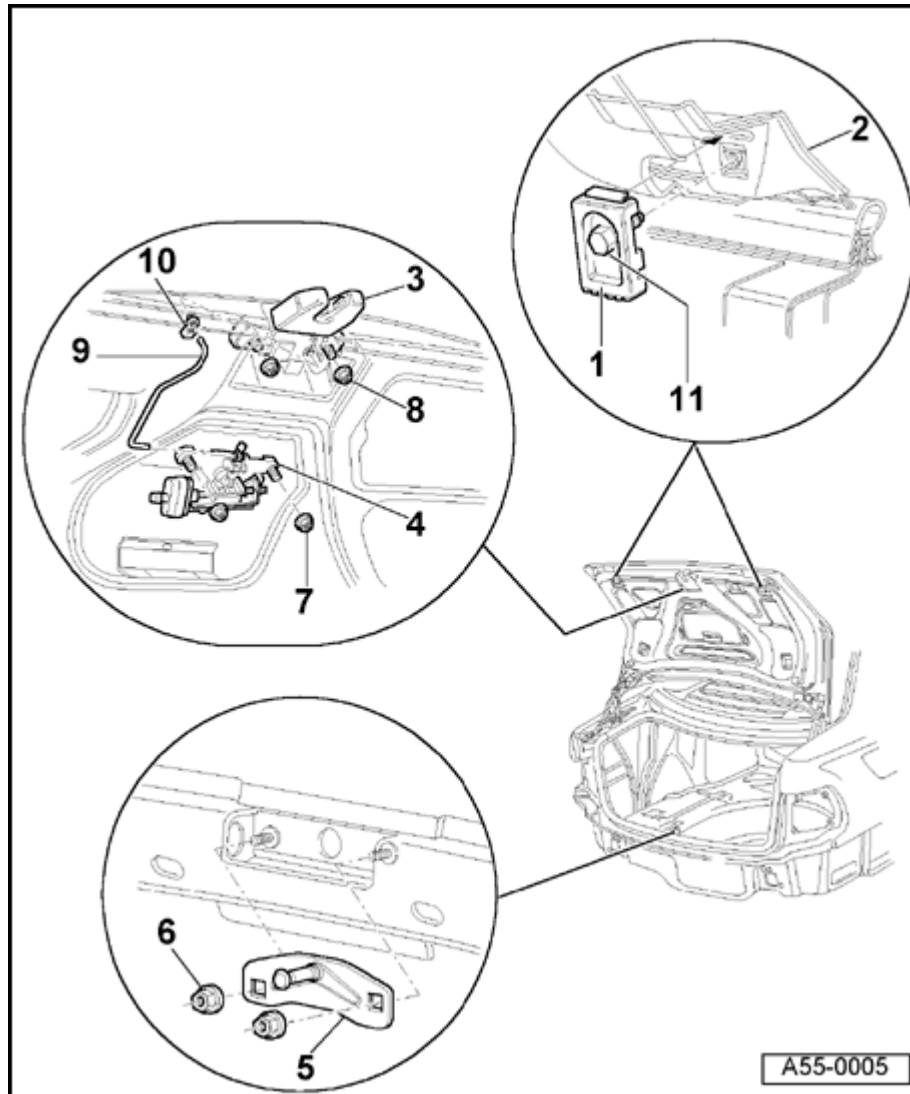
Rear lid (➤ m.y. 1999 VIN 8D XA 200 000)

Rear lid and rear lid lock, removing, installing and adjusting

1 - Stop buffer (2x)

Adjusting:

- Loosen bolt -11- and detach stop buffer.
- Tighten bolt -11- finger-tight (it must still be possible to move stop buffer).
- Carefully close rear lid until lid is flush with rear side panels.
- Carefully open rear lid -3-.
- Pull stop buffer -1- out two catches (1 mm preload) and tighten bolt -2- to 6 Nm \pm 0.5 Nm (53 in. lb \pm 4 in. lb).



2 - Rear lid

Removing:

- Remove warning triangle and holder ⇒ [page 55-21](#) .
- Remove rear lid lining.
- Disconnect and unclip electrical wiring harness connectors.
- Unclip vacuum line for central locking system.
- Second person is needed to remove lid
 - Remove nuts for rear lid hinges ⇒ [page 55-16](#) .

Installing:

- Install in reverse order of removal.

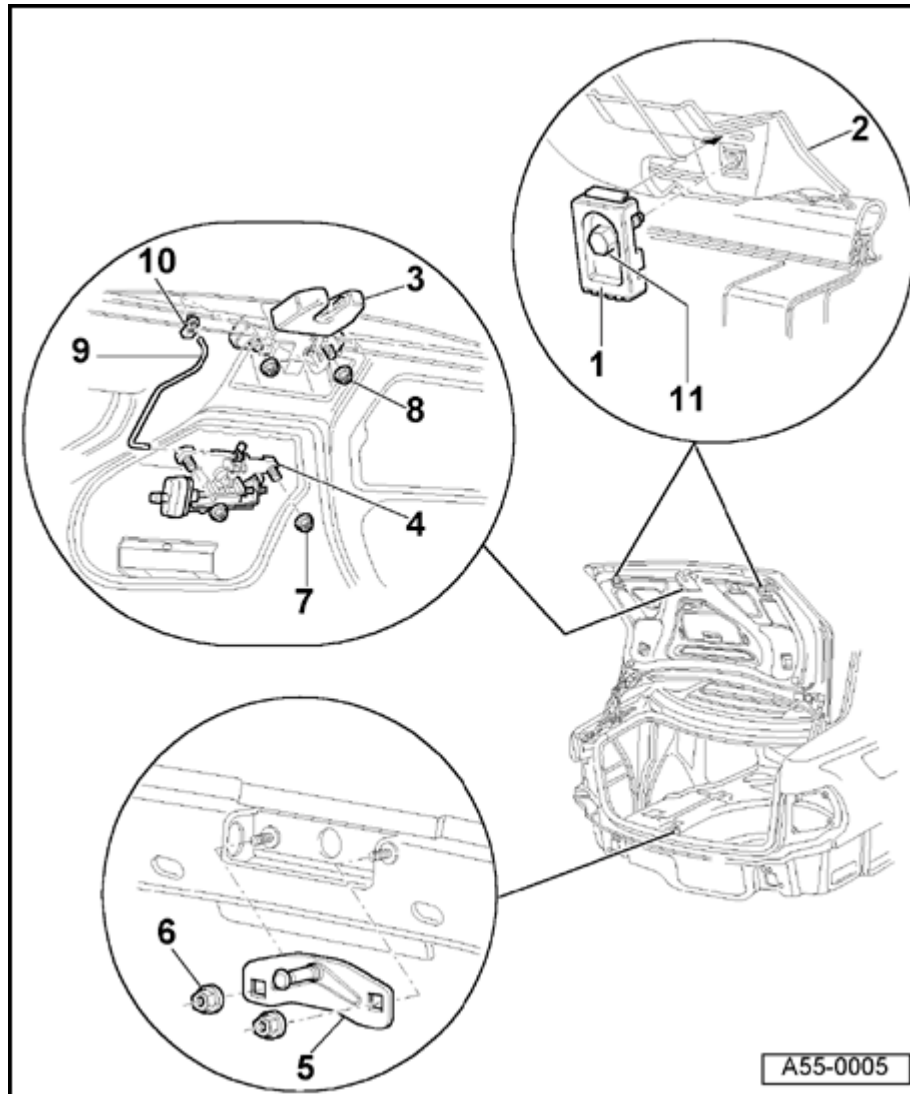
Adjusting:

- Use rear lid hinges to center and adjust height of rear lid ⇒ [page 55-17](#) .
- Adjust stop buffers -1-.
- Adjust striker plate -5-.
- Center lid according to panel gap dimensions ⇒ [page 55-20](#) .

3 - Rear lid lock

- Unclip operating rod -9-.

- Unscrew nuts -8-.



4 - Locking cylinder

- Remove warning triangle and holder ⇒ [page 55-21](#) .
- Remove rear lid lining.
- Disconnect vacuum line for central locking system.
- Disconnect harness connectors.
- Unclip operating rod -9-.
- Remove bolts -7-.

5 - Striker plate

- Unscrew nuts -6-.

Adjusting:

- Tighten nuts -6- finger-tight (it must still be possible to move striker plate).
- Carefully close rear lid until lid is flush with rear side panels.
- Carefully open lid and tighten nuts -6-.

6 - Hex nut

- ◆ 8 Nm (71 in. lb)

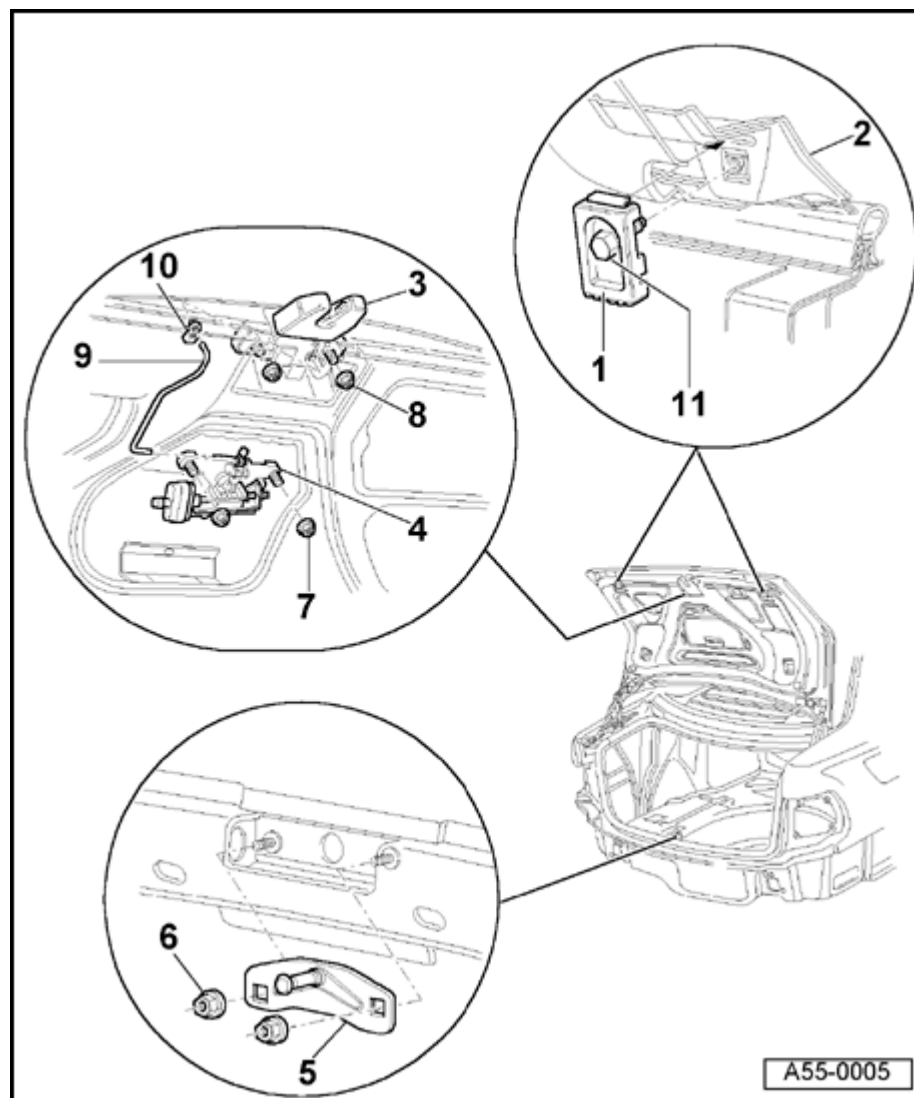
7 - Hex nut

- ◆ 8 Nm (71 in. lb)

8 - Hex nut

◆ 6 Nm (53 in. lb)

9 - Operating rod



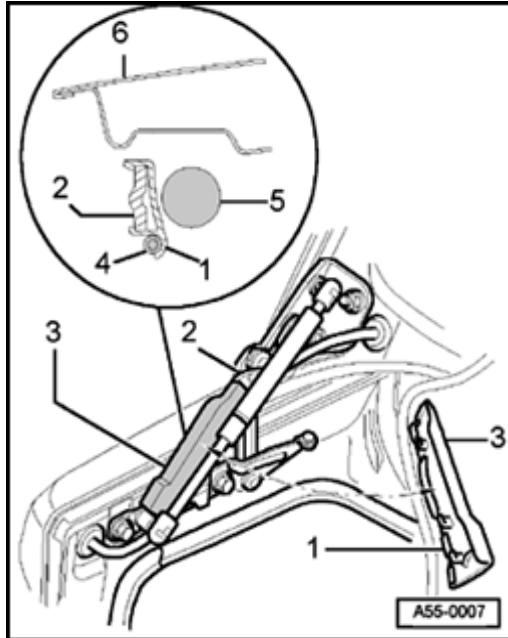
10 - Retaining clip

11 - Hex bolt

◆ 6 Nm (53 in. lb)

Rear lid hinge, removing and installing

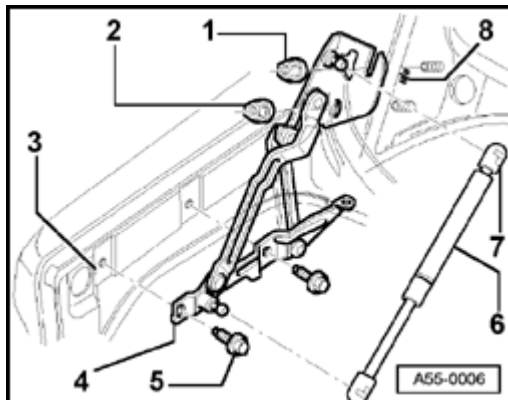
Rear lid hinge cover



A

- Insert wiring and tubing for central locking system -4- into lower recess of cable guide at cover -1-.
- From below, attach cover -3- for rear lid hinge between gas-filled strut -5- and hinge lever, and clip onto hinge lever -2- at top so it engages audibly.

Removing and installing rear lid hinge

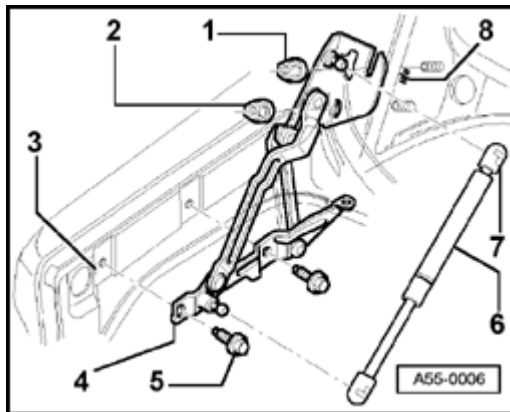


A

- Loosen nuts -1- at top on left and right.
Tightening torque: 21 Nm (15 ft lb)
- Remove nuts -2- at bottom on left and right.
Tightening torque: 21 Nm (15 ft lb)
- Prop up or secure lid in open position.

- Remove bolts -5- (2x).

Tightening torque: 21 Nm (15 ft lb)



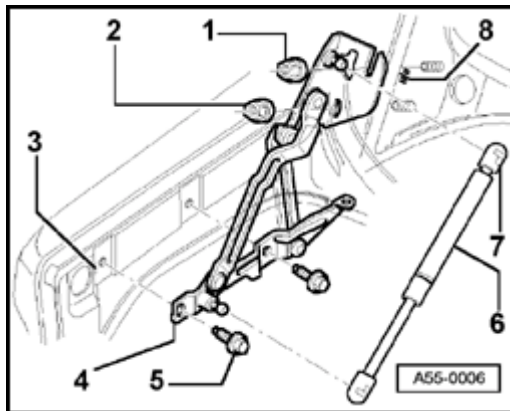
A

- Lift lid slightly and remove hinge -4-.

Note:

For easier adjustment of the rear lid hinge, use graduations -3- and -8- marked on the hinge and the rear lid.

Removing and installing gas-filled strut



A

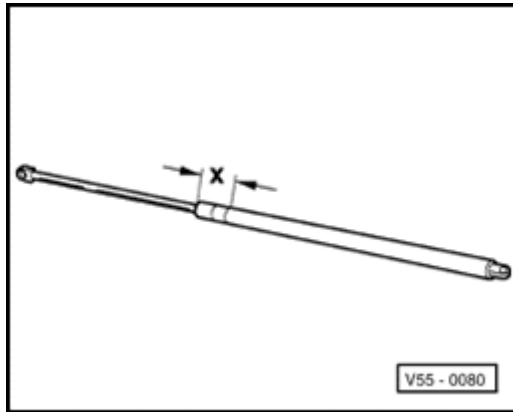
- Using screwdriver, push back retaining springs -7- slightly at both ends of gas-filled strut and clip or unclip gas-filled strut as desired.

Note:

When removing or installing the gas-filled strut, push back the opened rear lid slightly beyond its normal position, being careful not to damage components.

Installing

- Clip in gas-filled strut at bottom first, then at top.
- Install with tube end of strut at rear lid.



Releasing gas from strut

A

- Clamp gas-filled strut in vice area -x-.
Dimension -x- = 50 mm (2 in.)
- Using saw, cut into cylindrical part of strut at point within first third of cylinder's length (measured from piston rod end of cylinder).

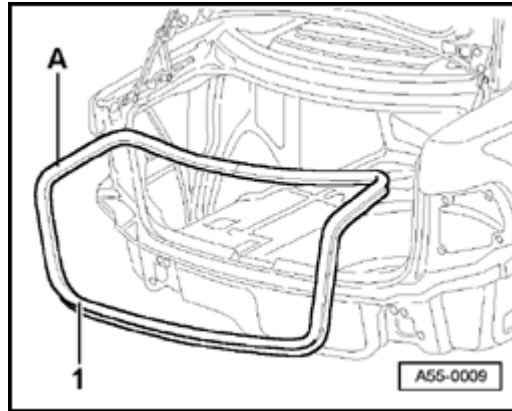
WARNING!

Clamp only in the area shown; otherwise there is a risk of an accident!

Note:

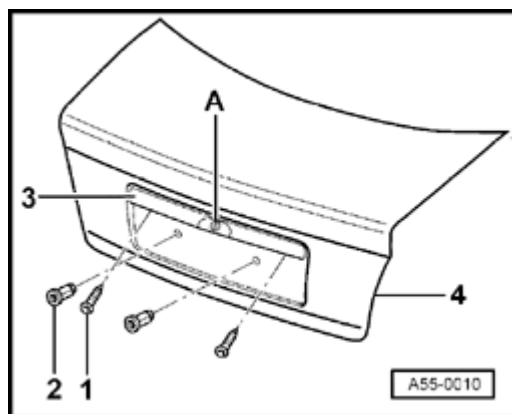
Always wear eye protection when performing this procedure. Cover the sawing area with a clean rag to contain any escaping fluid.

Rear lid seal, installing



- ▲ The butt joint -A- of the rear lid seal must be aligned with the ball socket of left hinge.

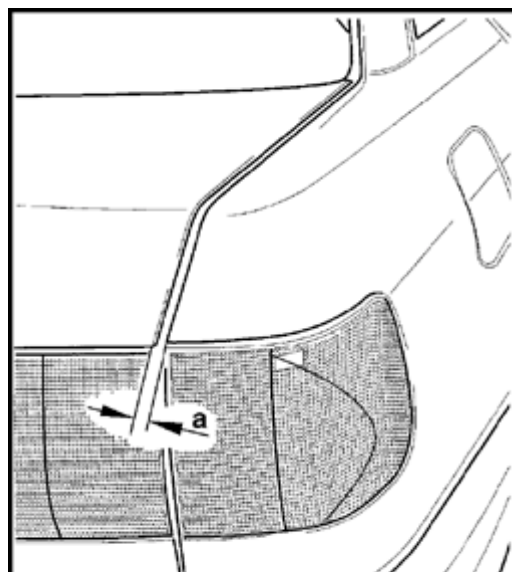
Removing and installing handle mechanism for rear lid



A

- Remove bolts -1- (2x).
Tightening torque: 2.5 Nm (22 in. lb)
- Attachment point -A-; remove nuts (2x) for lock cylinder on inside of lid.
Tightening torque: 6 Nm (53 in. lb)
- Pull handle mechanism -3- out enough that harness connectors for both license plate lights can be disconnected.
- Remove handle mechanism.
- Install nuts -2- (2x) using special tool VAG1618A.

Panel gap dimensions

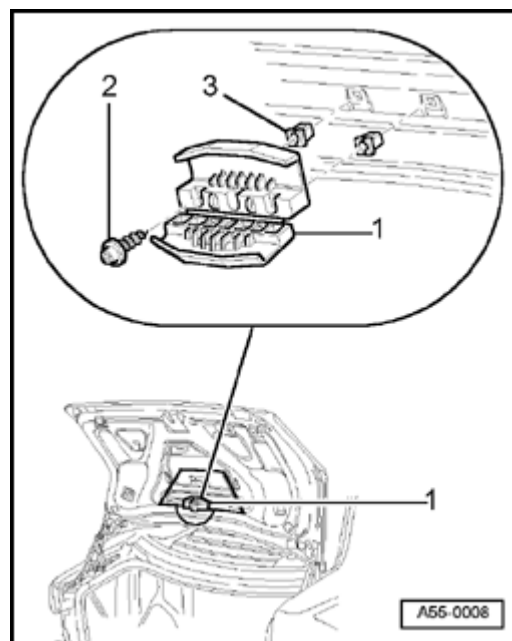


A

- a- = 3.0 mm

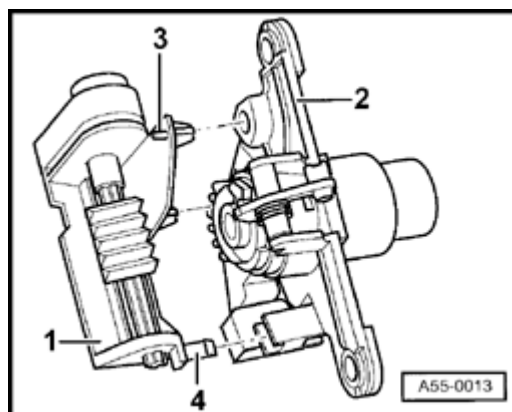
55-21

Removing and installing holder for warning triangle



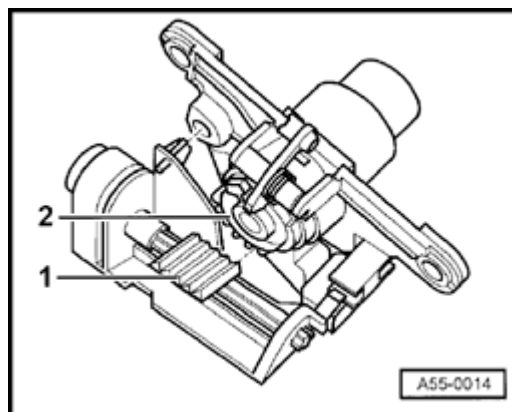
- Remove warning triangle.
- Remove bolts -2- (2x).
Tightening torque: 2 Nm
- 1 - Holder
- 3 - Expanding clips (2x)

Rear lid lock actuator, removing and installing



Removing

- Remove lock cylinder ⇒ [page 55-14](#) .
- Push out retaining pins -3- (2x).
- Push tab -4- back and disconnect.
- Remove rear lid lock actuator -1-.

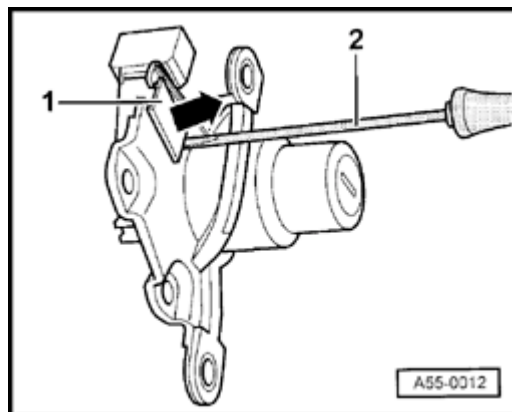


Installing

- Set lock cylinders in "open" position.
 - Slide ridged plate -1- to left.
- First ridge on plate -1- must snap into first groove on grooved segment -2-.

Rear lid microswitch, removing

- Remove lock cylinder ⇒ [page 55-14](#) .



A

- Disengage microswitch -1- in direction of arrow and carefully push out using screwdriver.

Notes:

- ◆ *The lock cylinder cannot be adjusted for compatibility with other locks using standard tools.*
- ◆ *In order to maintain single key capability, the lock cylinder must be ordered according to the lock number.*