

## Hood

### Hood, removing, installing and adjusting

#### 1 - Hood

##### Removing:

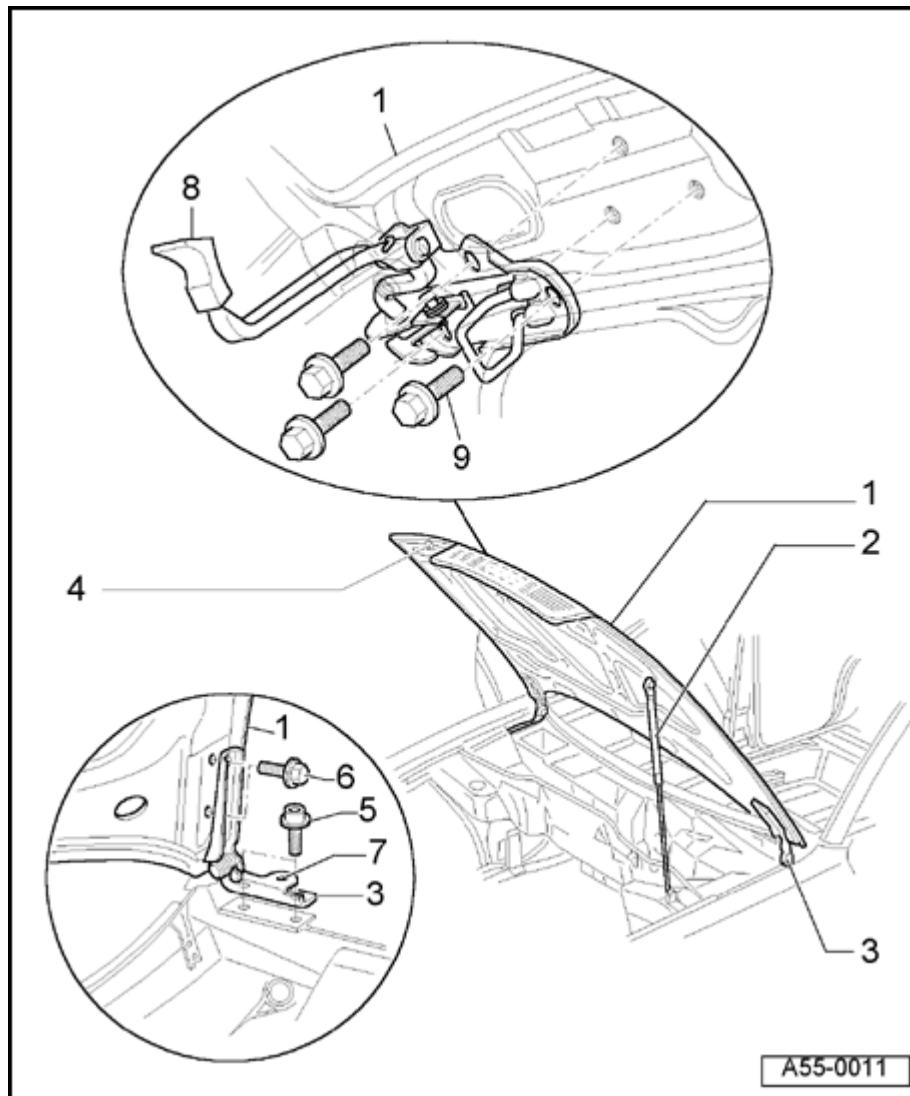
- Disconnect hose to windshield washer system and unclip.
- Second person is needed to support and lift hood during removal
  - Disconnect gas-filled strut -2- from hood -1-.
  - Remove bolts -6-.
  - Remove hood.

##### Installing:

- Install in reverse order of removal.

##### Adjusting:

- Align hood -1- between fenders.
- Adjust height of hood at hood lock ⇒ [Fig. 4](#) ⇒ [Page 55-7](#) .
- ◆ Hood can be adjusted for height relative to fenders by adjusting stop buffers -4- ⇒ [Fig. 2](#) ⇒ [Page 55-6](#)
- ◆ Panel gap dimensions ⇒ [Fig. 5](#) ⇒ [Page 55-7](#)



## 2 - Gas-filled strut

- ◆ Removing ⇒ [page 55-4](#)
  - To install, press gas-filled strut onto ball stud.
  - Install with tube end of strut at body of vehicle.
- ◆ Releasing pressure ⇒ [page 55-5](#)

## 3 - Hood hinge

- ◆ Hood -1- must be removed or propped up securely
  - To remove, remove bolts -5-, -6- and -7-.

## 4 - Stop buffer

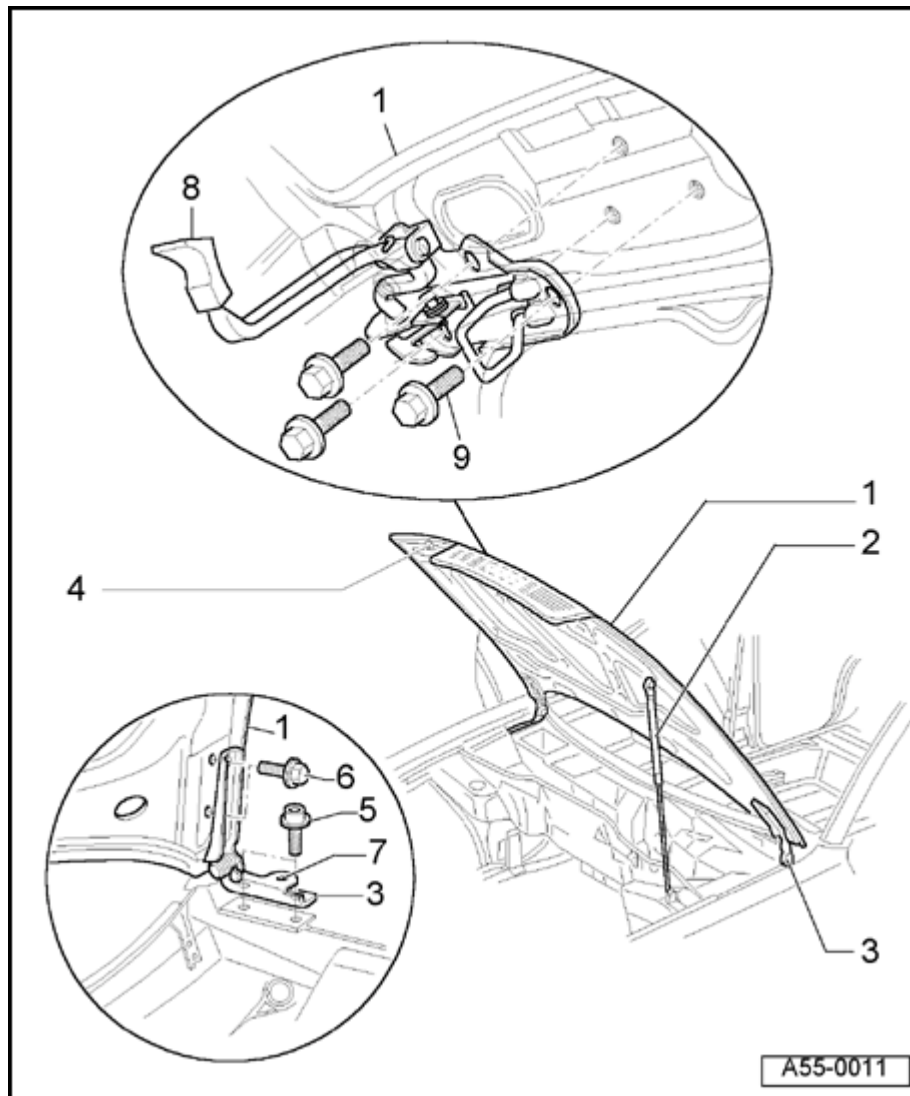
- ◆ Adjusting ⇒ [Fig. 2](#) ⇒ [Page 55-6](#)

## 5 - Bolts (2x)

- ◆ 21 Nm (15 ft lb)

## 6 - Bolts (2x)

- ◆ 21 Nm (15 ft lb)

**7 - Bolt**

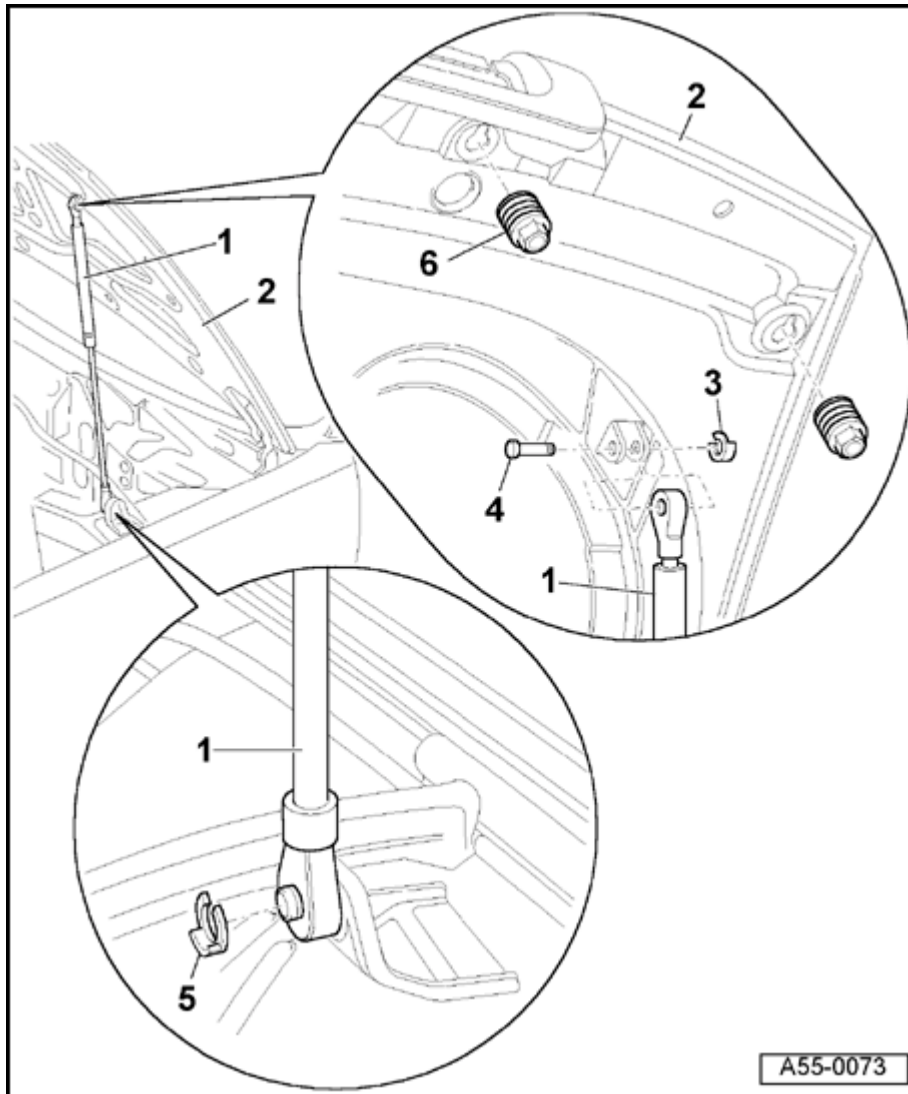
- ◆ 7.5 Nm (66 in. lb)

**8 - Hood lock release**

- To remove, remove bolt -9-.
- ◆ Installing ⇒ [Fig. 3](#) ⇒ [Page 55-6](#)
- ◆ Hood lock release can only be adjusted in direction of travel

**9 - Bolts (3x)**

- ◆ 8 Nm (71 in. lb)



## Gas-filled strut, removing and installing

### 1 - Gas-filled strut

#### Removing:

- Prop up or secure hood -2- in open position.
- Remove securing clip -5-.
- Also remove clip -3-.
- Lift hood slightly, remove bolt -4- and remove gas-filled strut.

#### Installing:

- Install with tube end of strut at body of vehicle.

### 2 - Hood

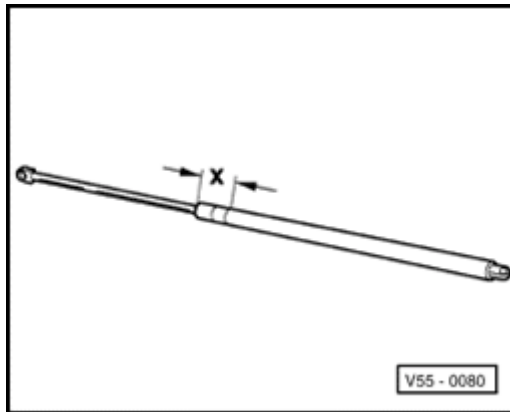
### 3 - Securing clip

### 4 - Pins

### 5 - Securing clip

### 6 - Stop buffer

- ◆ Hood height adjustment ⇒ [Fig. 2](#)



A

**Fig. 1 Releasing gas from strut**

- Clamp gas-filled strut in vice area -x-.

Dimension -x-: 50 mm (2 in.)

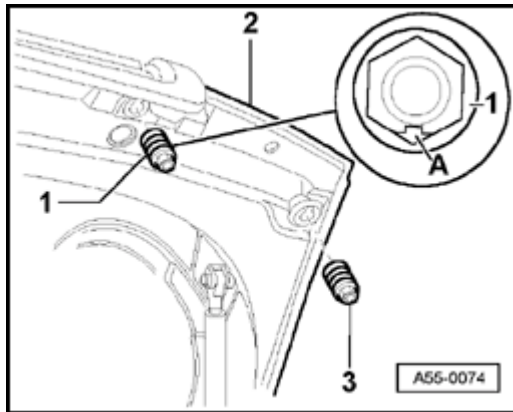
- Using saw, cut into cylindrical part of strut at point within first third of cylinder's length (measured from piston rod end of cylinder).

***WARNING!***

***Clamp only in the area shown; otherwise there is a risk of an accident!***

**Note:**

*Always wear eye protection when performing this procedure. Cover the sawing area with a clean rag to contain any escaping fluid.*



A

### Fig. 2 Adjusting height of stop buffers

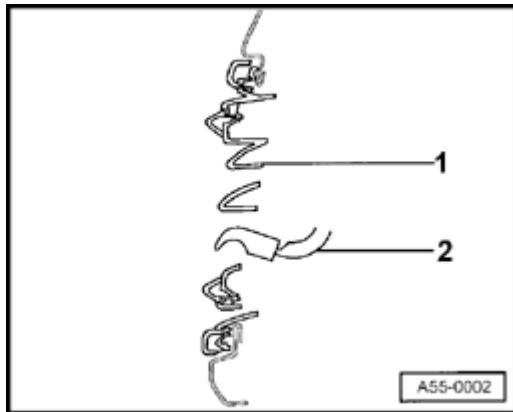
- When hood is closed, stop buffer -3- (2x external) must rest lightly on the lock carrier.

#### Note:

*The stop buffers can be used for adjusting the height of the hood.*

- Turn stop buffer -1- (2x internal) in hood -2- until impact, then unscrew one half rotation.

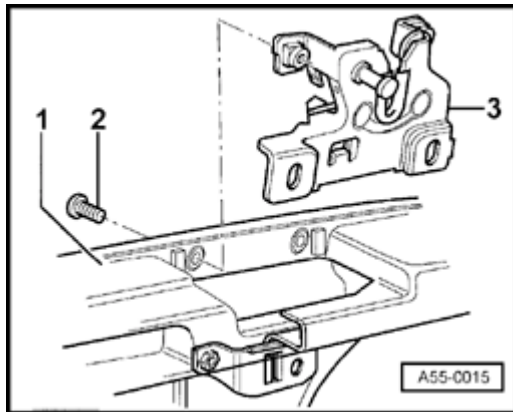
Marking -A- must point toward rear of vehicle.



A

### Fig. 3 Hood latch release

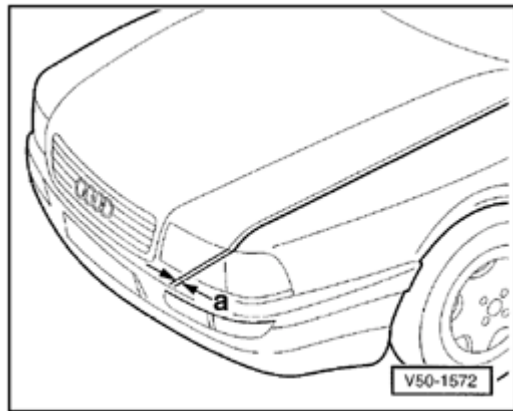
- Hood lock actuator -2- must be flush with radiator grill when closed.
- Hood lock actuator must be centrally positioned relative to radiator grill.



A

#### Fig. 4 Removing and installing lower section of hood lock

- Disengage hood lock cable ⇒ [page 55-10](#) .
  - Remove bolts -2- (4x).  
Tightening torque: 10 Nm (7 ft lb)
  - Remove lower section of lock -3-.
- 1 - Lock carrier
- To adjust hood, move lower section of lock up or down as required.



A

#### Fig. 5 Panel gap dimensions

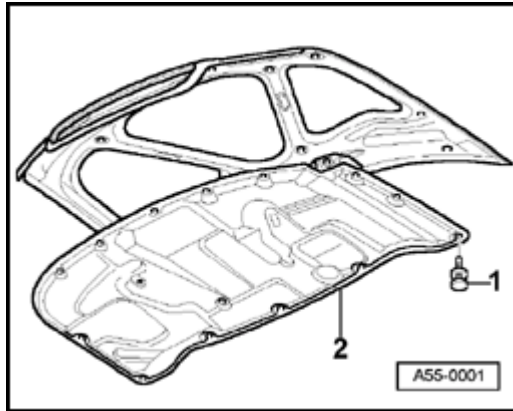
Gap dimensions can be checked using 3371 adjustment gauge.

Dimension -a- = 3.0 mm

### Hood lining, removing



- Remove clips -1- (17x).
- Remove lining -2-.



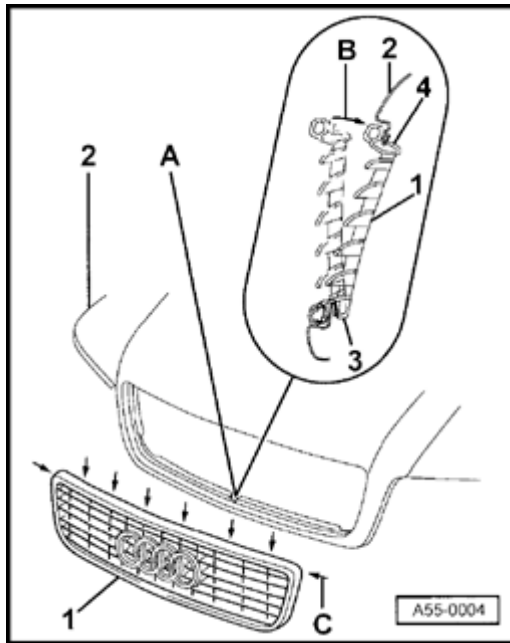


## Radiator grill, removing and installing

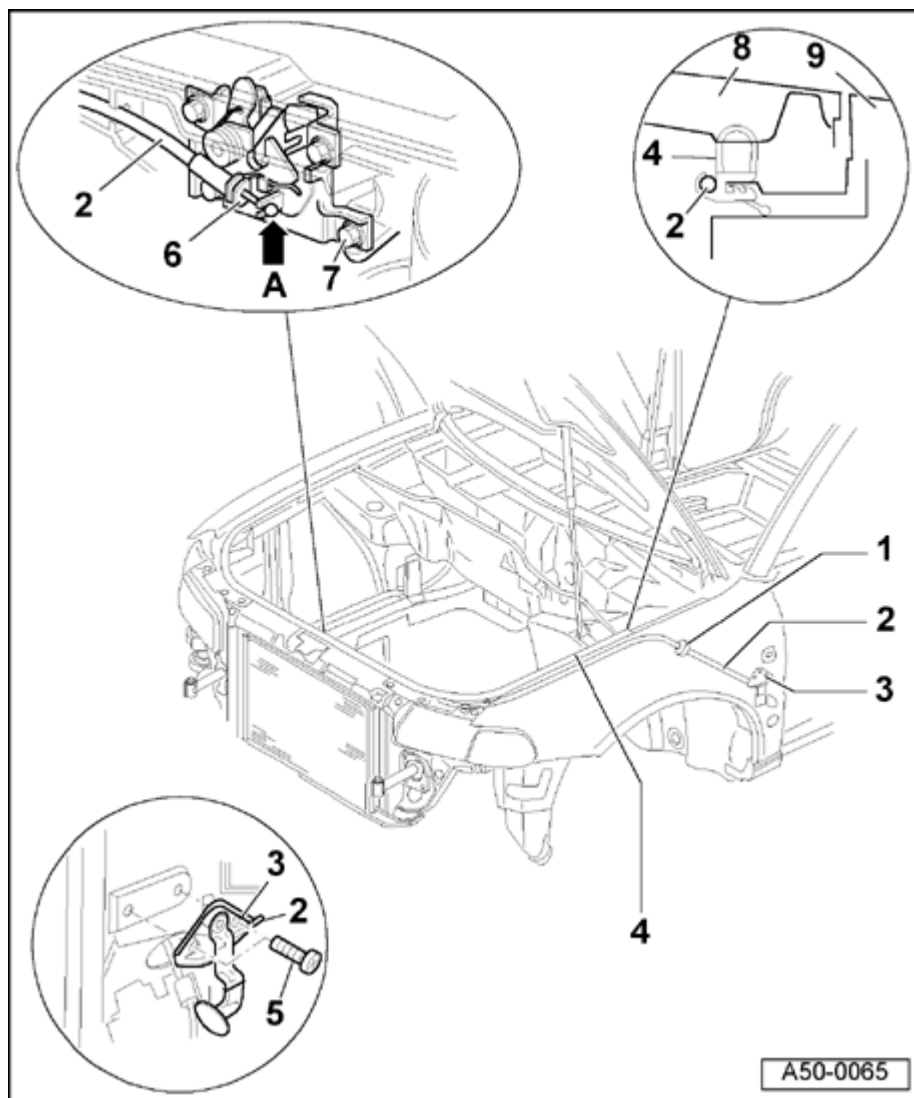


Mounting point -A- centers radiator grill in hood.

- Place radiator grill -1- in guide notch -3- and clip into hood -2- in direction shown by arrow -B-.
- Arrows -C- designate all retaining tabs -4-. Retaining tabs must be unclipped individually during grill removal.



55-10



## Hood lock cable, removing and installing

### 1 - Grommet

### 2 - Hood lock cable

Removing:

- Remove storage compartment on driver's side.

⇒ [Repair Manual, Body-Interior, Repair Group 68](#)

- Remove bolts -3-.
- Detach cable -2- at support -6- and disengage from attachment point -A-.
- Remove cable -2- from guide channel in seal -4- and pull cable through bulkhead into interior of vehicle.

Installing:

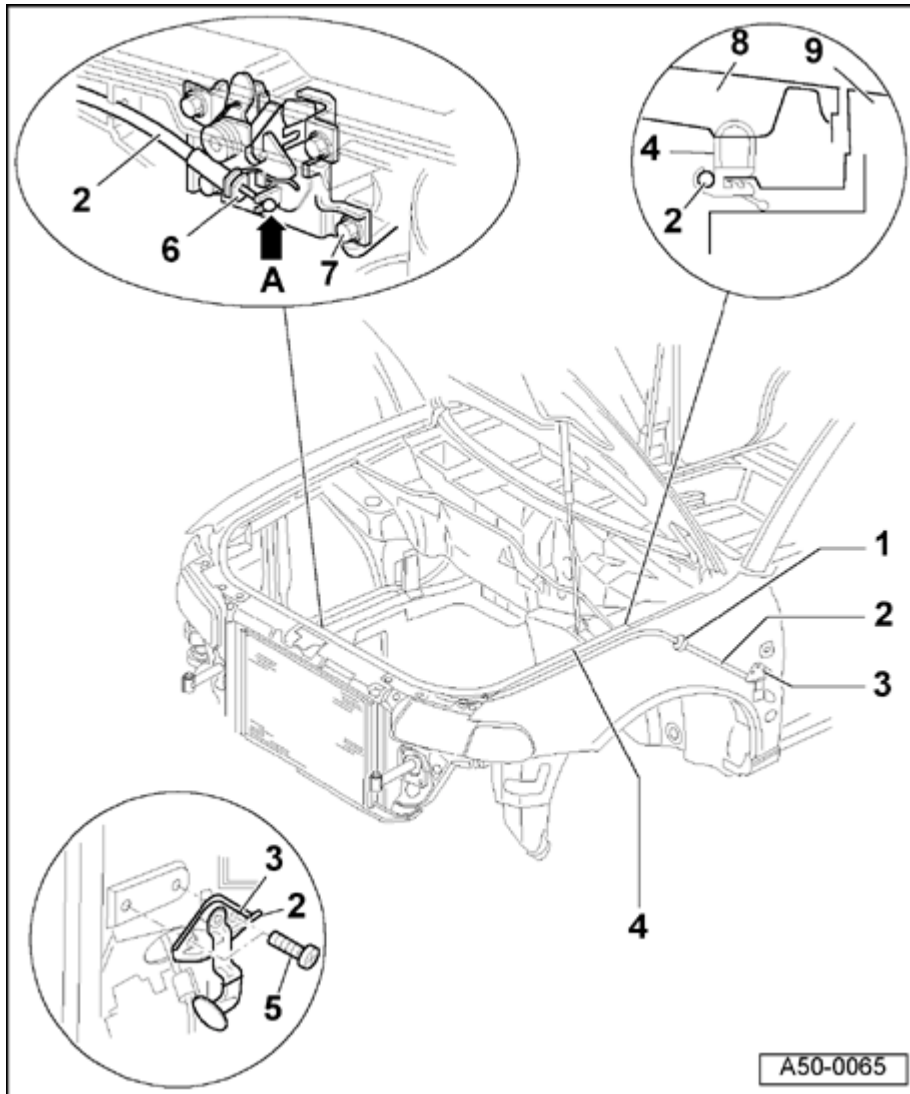
- Install in reverse order of removal.

### 3 - Hood lock release

### 4 - Seal

### 5 - Bolt

- ◆ Qty: 2
- ◆ 4 Nm (35 in. lb)



**6 - Attachment point for hood lock cable**

**7 - Bolt**

◆ Qty: 4

◆ 10 Nm (7 ft lb)

**8 - Hood**