

# Service Information

## VAS Tester

**Subject: VAS Diagnostic Devices – Windows® 7 Installation**  
**Instructions for Independent Repair Facilities**

**Date: Mar. 5, 2014**

## 1.0 – Introduction

### 1.1 - Background

Microsoft® support of Windows® XP ends April 8, 2014. As a result, all eligible VAS diagnostic devices connected to VWAG Group systems worldwide **must be updated to Windows 7.**

This document contains step-by-step instructions required to install the **Windows 7 Professional operating system** from **VWGoA-supplied DVDs** on the eligible VAS diagnostic devices identified below.

### 1.2 – Eligible Devices

The Windows 7 installation process described here applies **ONLY** to the following VAS diagnostic devices:

Type:	Model Numbers
Laptops	<b>VAS 6150A, VAS 6150B &amp; VAS 6150C</b>
Tablets	<b>VAS 6160 &amp; VAS 6160A</b>

### 1.3 – Installation Process Overview

#### **Windows 7 Installation DVDs**

Windows 7 installations are performed using **device-specific DVDs.**

Each DVD is individually identified by **device model number**, and can be used on multiple devices **of the same model**. An error message appears if a DVD is used on the wrong device.

If you do NOT have the correct DVD for your VAS device, please contact Arvato at 800-544-8021.



VAS6150A Part Number – ASE-905-206-00-000

VAS6150B Part Number – ASE-905-2069-00-001

VAS6150C Part Number – ASE-905-2069-00-002

VAS6160/6160A Part Number – ASE-905-400-00-000

# Service Information

---

## Installation & Recovery

---

Windows 7 files from the **device-specific DVD** are installed on a hard drive partition. The Windows recovery procedure is then initiated to overwrite the existing Windows XP operating system files with Windows 7 files.

**All data on hard drive C:\ is erased and replaced.** The Windows 7 recovery data installed on the hard drive partition is retained if recovery is required in future.

## Diagnostic Software and Security Certificate Reinstallation

---

The Windows 7 recovery process deletes the previously-installed ODIS Service license and certificate files, and changes the device's hardware key. As a result, **a new license file and ODIS Service Security certificate** must be requested from erWin prior to ODIS Service reinstallation.

The total time to complete all procedures depends on many variables. Examples include differences in device performance, installer proficiency, license and certificate approval times. Performing supplementary setups immediately or deferring until later also affects total completion times. Examples include reinstalling antivirus and printer software, downloading and installing ODIS Service and Windows updates. **As such, a general time-to-completion estimate is not plausible.**

### IMPORTANT!

- If the Windows - Panasonic CDs originally included with the device when new were retained, **please LOCATE and DISCARD THESE DISCS NOW!** Inadvertent use of the Panasonic CDs for recovery will completely erase the device-specific data and partitioned image, and install a standard, non-partitioned Windows XP or Windows 7 operating system.
- If the Windows 7 installation performed here malfunctions or becomes corrupt, it must be recovered from the image on the partition.
- It is not possible to revert back to Windows XP once Windows 7 is installed.
- Do not install VAS-PC diagnostic software on a Windows 7 device!
- Perform all procedures specified here on **ONE DEVICE AT A TIME** through to completion, **BEFORE** commencing with other devices.

## 2.0– Installation

1. **Insert** the device-specific installation DVD in the DVD-ROM drive and **wait** while the disc is read.
2. Go to: **My Computer** and **Open** the **DVD-ROM** directory. **Note:** *The title and drive information illustrated below are for reference only:*



6160\_Win7\_Rec-DV (E:)

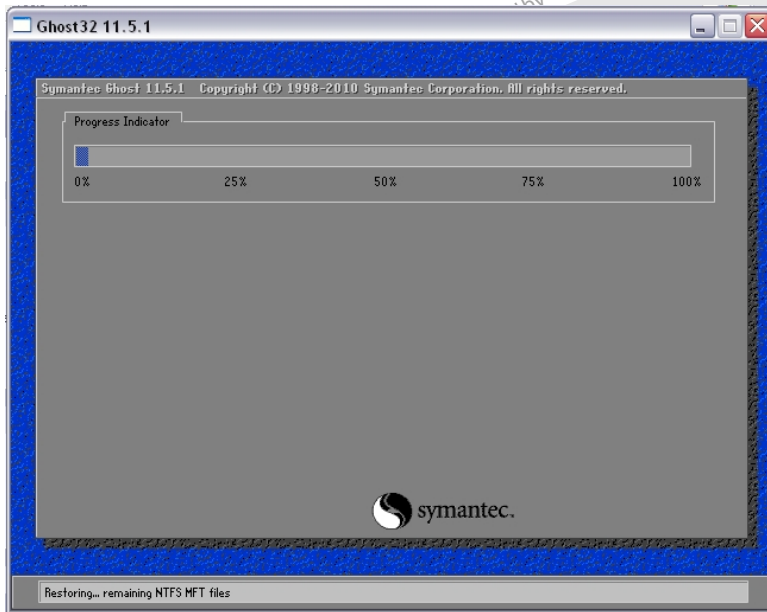
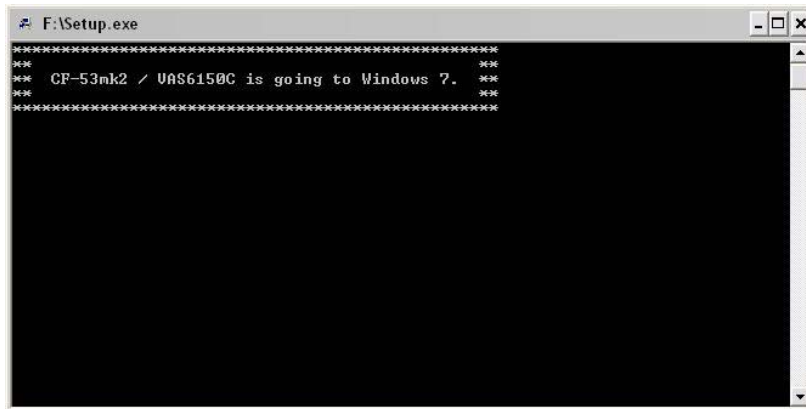
# Service Information

---

3. Click **Setup**:



The **Setup.exe** and **Symantec Ghost** screens appear automatically, one after another:

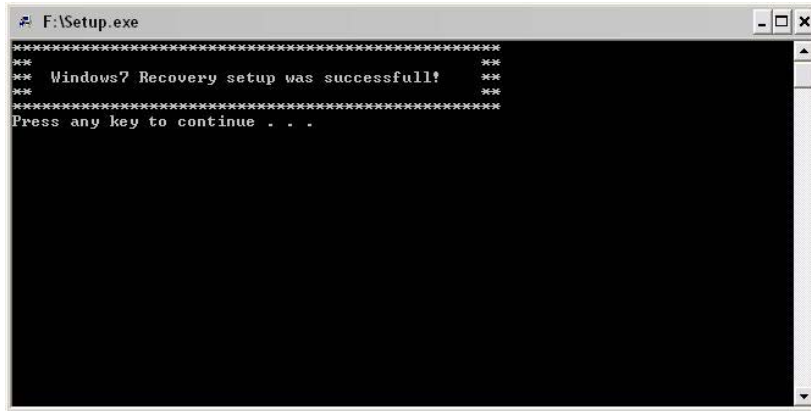


## Notes:

- *User intervention is not required during the setup and ghost processes.*
- *If the processes are aborted by the user, or automatically by the system, repeat Steps 1 - 3 above. **DO NOT** start the recovery process if the setup and ghost processes are not completed.*

# Service Information

When the setup and ghost processes are completed, the following screen is displayed:



4. **Press** any key and **remove** the installation DVD from the CD/DVD drive.
5. **Close** all windows and **shut down** the diagnostic device: **Start > Turn Off Computer... > Turn Off**
6. **Remove** the diagnostic device **from the base station** (port replicator) where applicable.
7. **Retain** the DVD for use on additional devices with the same model number.

☐ Installation steps completed.

## 3.0 – Recovery

### Prerequisites:

- ☐ All devices **removed** from their base station (port replicator) where applicable.
- ☐ **Confirm: Ethernet cable DISCONNECTED & wireless operation switch in the OFF POSITION!**

### ATTENTION!

The A/C power adapter must be connected directly to the device during recovery. **DO NOT** recover on battery power alone!

1. **Turn on** the diagnostic device.
2. When the **Panasonic** logo is displayed, quickly press the **F2** key on the keyboard to enter the setup.



# Service Information

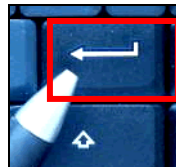
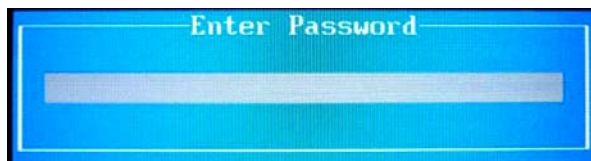
A BIOS password prompt appears.

3. **Note** the device-specific password from the table below:

Model	BIOS Password
VAS 6150A	vas6150
VAS 6150B	vas6150b
VAS 6150C	vas6150c
VAS 6160 & VAS 6160A	vas6160

4. **Enter** the password **exactly as noted above** (lower case, no spaces):

5. **Press** the keyboard (or onscreen keyboard) **Enter** key:

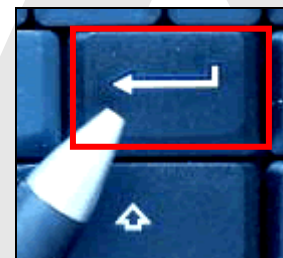
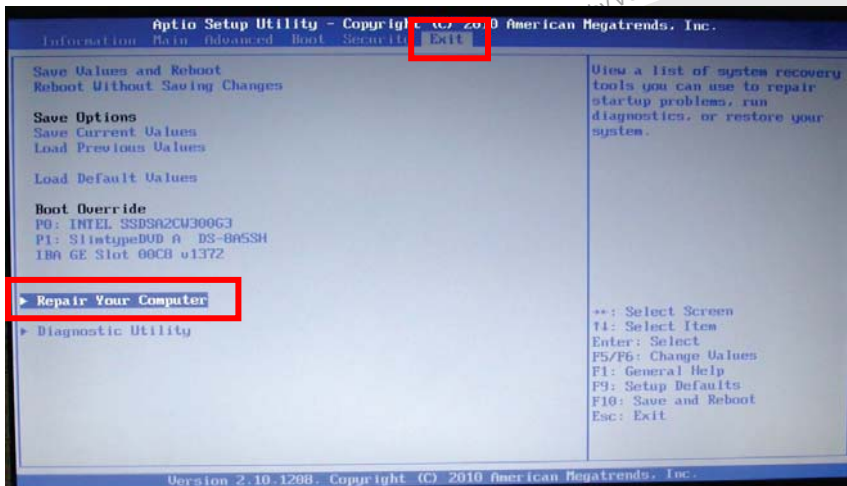


6. In the **BIOS menu**, use the **right and left arrow keys** to select the **Exit** tab:

7. Using the **up and down arrow keys**, select either:

**Repair Your Computer** **OR** **Recovery Partition**

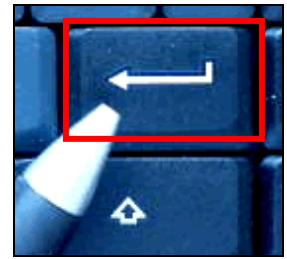
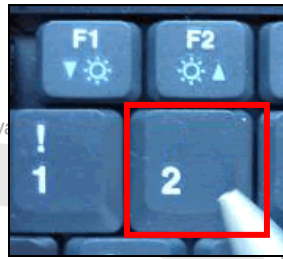
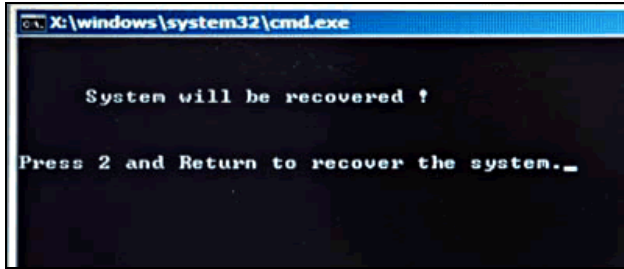
as applicable. Press the **Enter** key to continue:



After the **Enter** key is pressed, the system recovery starts. After approximately 2 minutes, the message **"System will be recovered"** is displayed.

# Service Information

8. Press the **2** key, then press the **Enter** key to continue:



- Allow 30 – 90 minutes for device recovery (device-dependent).
- The progress window may appear to stall at 99% - 100%. Please be patient!
- When complete, the system will automatically reboot and display a series of automatic setup, registry and service screens followed by the initial Windows setup screen.

☐ Recovery steps completed.

## 4.0 – Post-Recovery Setup

### 4.1 – Windows® 7 Startup & Initial Setup

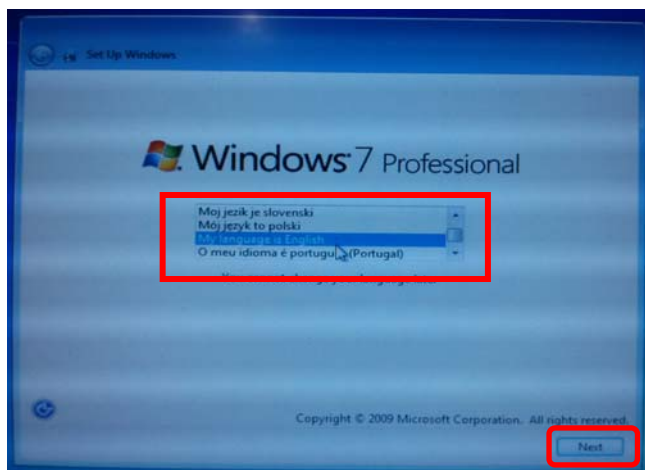
**Prerequisite:**

- ☐ **Confirm: Ethernet cable **DISCONNECTED** & wireless operation switch in the **OFF POSITION!****

#### **Note:**

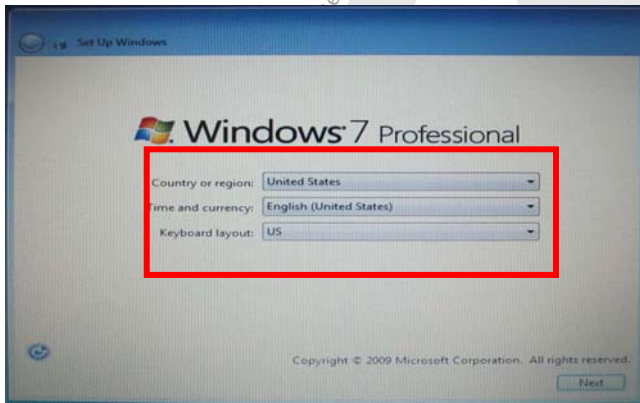
*The initial language selection made in Step 1 below cannot be changed after the device is placed in service. **Avoid having to repeat the recovery process by selecting the language carefully!***

1. From the initial Windows setup screen, **carefully scroll down** and select **My language is English:**  
Click **Next:**

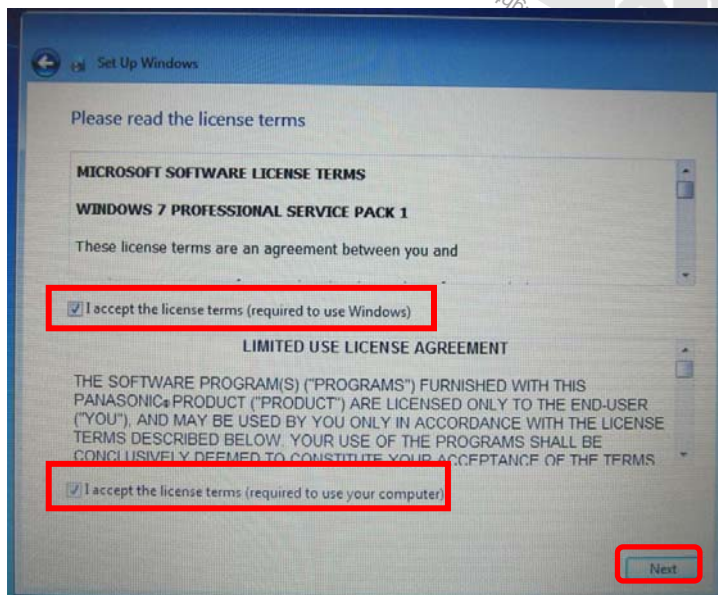


# Service Information

2. **Confirm** the regional settings, time/currency and keyboard layout as illustrated, and then click **Next**:

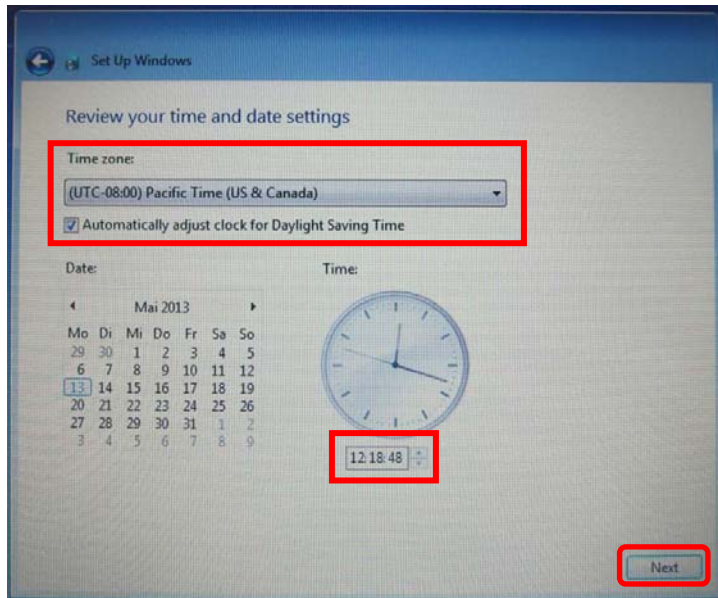


3. **Read** the **license terms and conditions**, and accept by checking the appropriate boxes. Click **Next**:



4. **Set** the **Time Zone, Daylight Saving Time, Date and Time** as applicable to your location. Click **Next**:

# Service Information



- Various settings are saved and the device automatically reboots to the Windows desktop.
- For convenience, the device can now be returned to its base station **if desired** (not mandatory).
- In all cases **the A/C power adapter must remain connected** for the following procedures. The USB mouse and keyboard should also remain connected where applicable.

## 5.1.1 – Delete Non-Applicable Information

The Windows 7 desktop includes documents that are not applicable to the -US/CDN- market. **Please delete these documents** as follows:

1. From the Windows desktop: **Locate** two document **shortcut icons** entitled:

**HowTo Guide\_ODIS Service Set-Up\_EN** and **HowTo Guide\_ODIS Service Set-Up\_DE**:

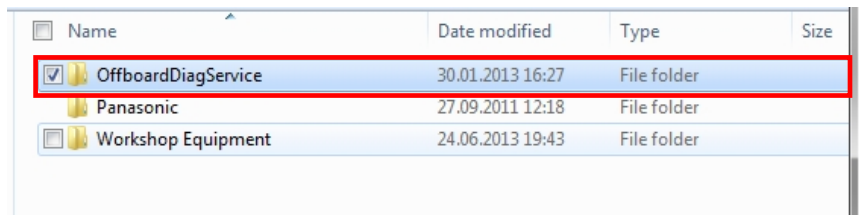


2. **Right-click** a shortcut icon, and then select **Delete** from the dropdown.
3. When prompted to confirm file delete, click **Yes**. Repeat for the remaining icon.
4. From the Windows desktop: **Open** the **Manuals** folder:



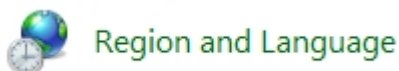
# Service Information

5. **Right-click** the **OffboardDiagService** folder, and then select **Delete** from the dropdown:

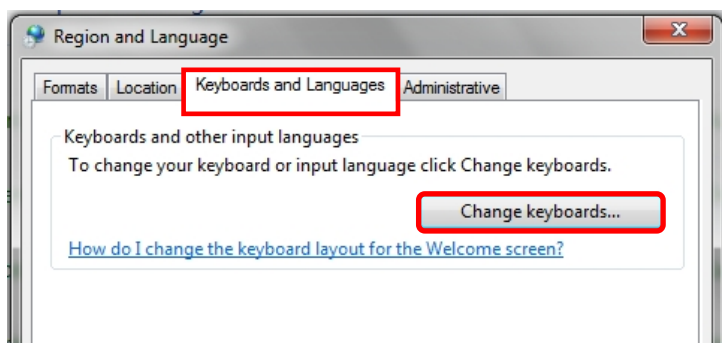


## 5.1.2 – Confirm Keyboard Language

1. Go to: **Windows (Start)**  **> Control Panel > Region and Language:**

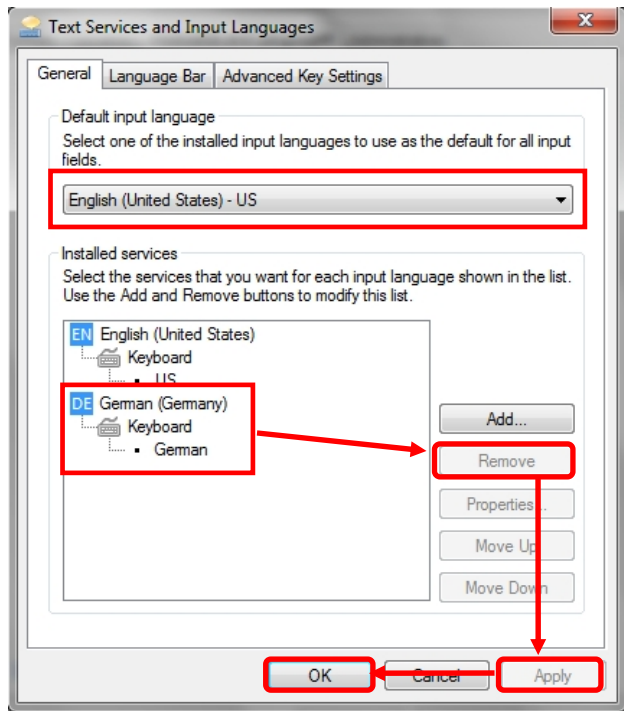


2. **Select the Keyboards and Languages tab.** Click **Change Keyboards...**:



3. **Confirm** that the **Default input language** is set to **English (United States) - US** as illustrated below. If not, select it from the dropdown.
4. **If the German (Germany) input language service appears, select it and click Remove.**
5. If any changes were necessary, save them by clicking **Apply**, and then **OK**:

# Service Information



6. Close the languages window and return to the **Control Panel** menu.

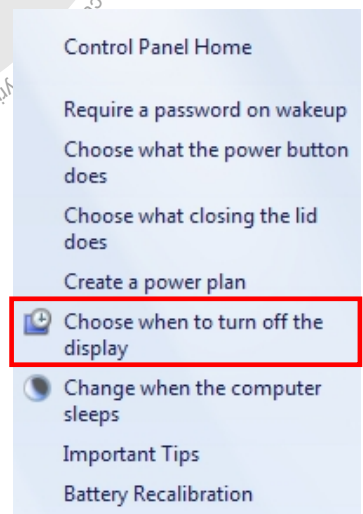
## 5.1.3 – Device Power Management

To ensure uninterrupted data transfer when performing lengthy Software Version Management (SVM) procedures, configure the device to remain on as follows:

1. Go to: **Control Panel > Power Options**:

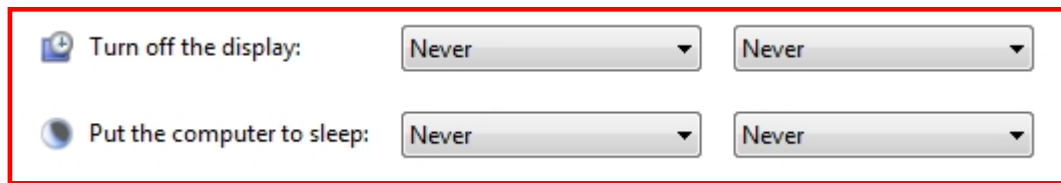


2. From the Control Panel Home menu, select **Choose when to turn off the display**:



3. Select **Never** from the dropdowns as illustrated:

# Service Information



4. Click **Save changes** (at bottom frame):

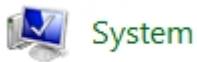


5. **Close** the power options window and return to the **Control Panel** menu.
6. **Check and proceed** to the device-specific sections as applicable:
  - ☐ **VAS 6150B, VAS 6150C, VAS 6160 & VAS 6160A:** Proceed to [Section 5.1.5 – Page 13.](#)
  - ☐ **VAS 6150A:** Proceed to **Section 5.1.4** below:

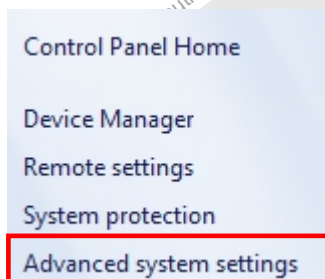
## 5.1.4 – VAS 6150A Diagnostic Laptops: Increase Paging File Size

For optimum performance, increase the paging file size **on VAS 6150A laptops** as follows:

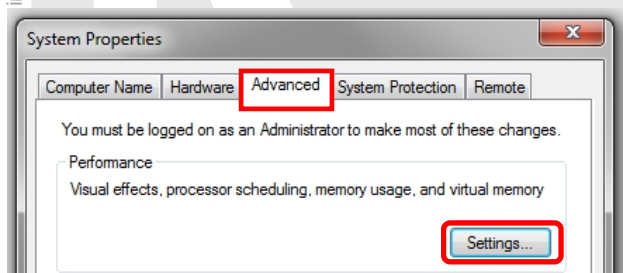
1. Go to: **Control Panel > System:**



2. From the Control Panel Home menu, click **Advanced system settings:**

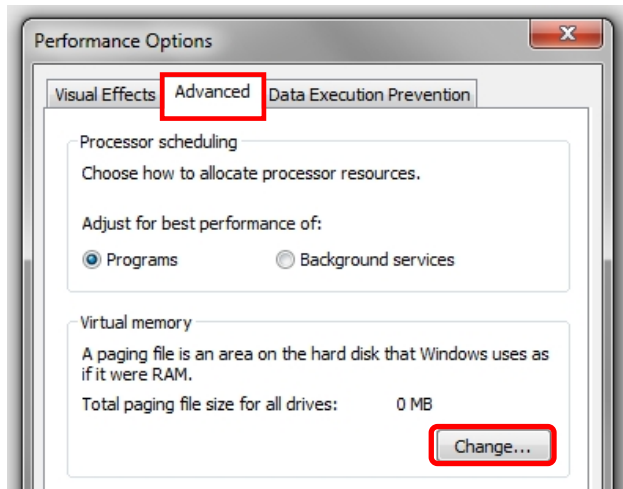


3. Select the **Advanced** tab. In the **Performance** category, click **Settings:**

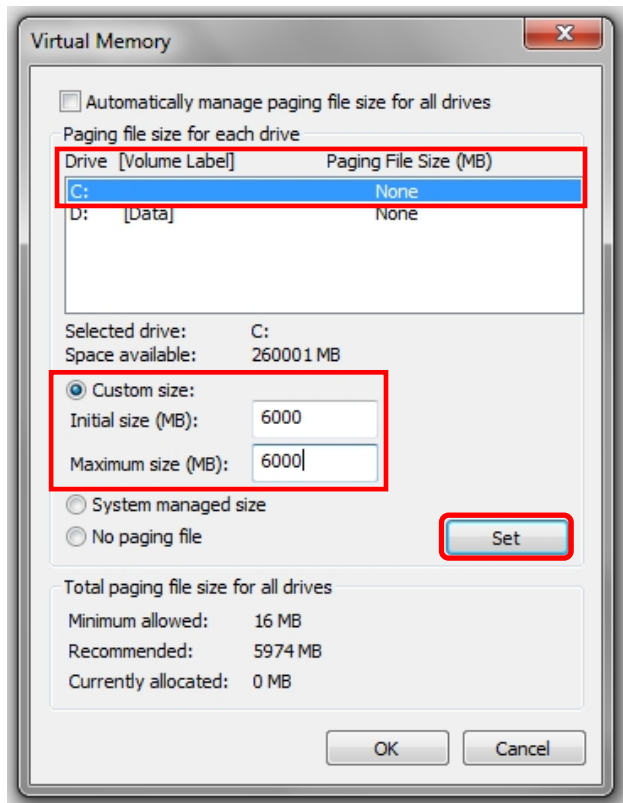


4. Select the **Advanced** tab. In the **Virtual memory** category, click **Change:**

# Service Information

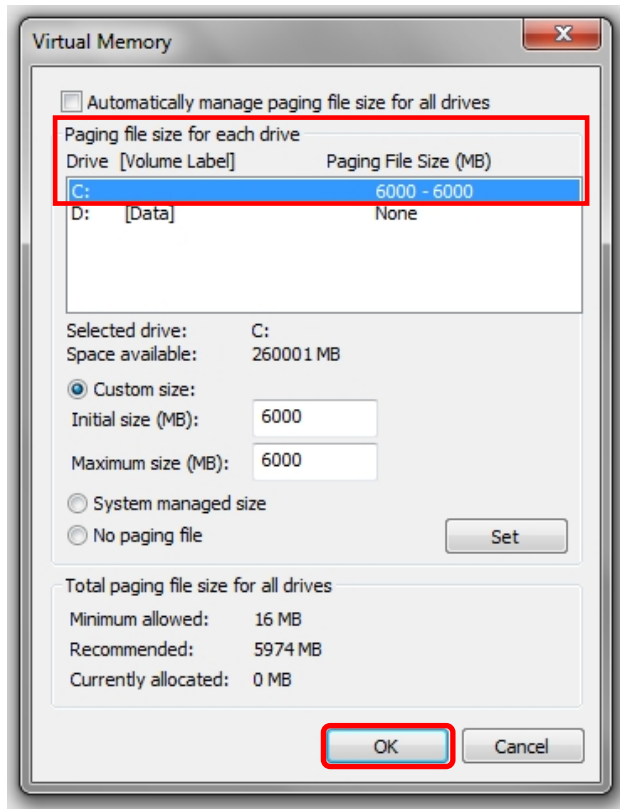


5. Ensure **Automatically manage paging file size for all drives** is **deselected** and **Drive [Volume Label] C:** is highlighted:
6. Select **Custom size:**, and then **enter 6000** in both the **Initial** and **Maximum** size entry fields as illustrated below: When complete, click **Set**:





7. Ensure that the **Paging File Size (MB)** indicated for **C:** is displayed as **6000 - 6000**: Click **OK**:

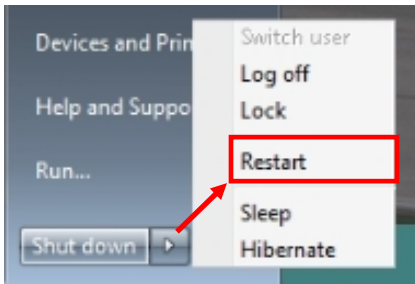
# Service Information



## 5.1.5 – Restart Windows

A restart is required to complete automatic Windows configurations on certain devices. Proceed as follows, and note the **Windows 7 Shut down** and **Restart** routines for future reference:

1. Close all windows and **Restart** the device. Go to: **Windows (Start)**   **> Restart:**



**Windows 7 Startup & Initial Setup steps complete.**

# Service Information

## 6.2 – Windows® Update Settings & Internet Explorer Version Requirement

The **Windows 7** version installed here includes **Internet Explorer (IE) version 9**.


### IMPORTANT!

The automatic download and installation of IE10 and IE11 from a Windows update must be prevented!

The installation of IE10 or IE11 results in impaired ODIS Service web-based services functions.

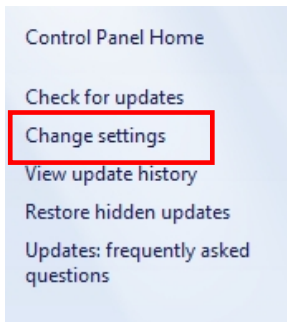
The default setting for Windows updates is to automatically download files when a network connection is present, and then prompt the user to install them. As a first step to prevent the download and installation of Windows updates that include IE10 and IE11, change the default setting to (manually) check for updates and prompt the user to choose the updates as specified below. Separate instructions on managing Windows updates and disabling IE updates are covered in **Section 6.7**.

Perform the following configuration **BEFORE** setting up the network connection:

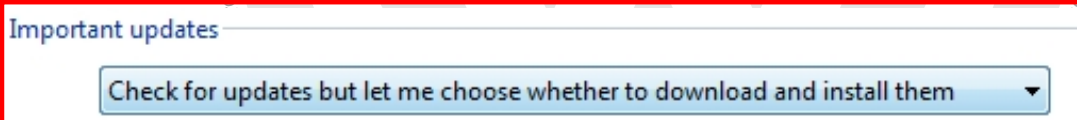
1. Go to: **Windows (Start)**  **> Control Panel > Windows Update:**



2. From the Control Panel Home menu, select **Change settings:**



3. Select the “**Check... & ...choose**” update method from the **Important updates** selection dropdown:



4. Click **OK** (at bottom frame):



# Service Information

---

5. Close the **Control Panel** window.



**Windows Update Settings steps completed.**

## **Note:**

*Before proceeding with **Sections 6.3 through 6.5**, have the additional documentation specified in **Section 2.0 – Page 3** on hand.*

## **6.4 – Reinstall & Configure Offboard Diagnostic Information System Service (ODIS Service) Diagnostic Software**

Refer to the **ODIS Service – Installation Instructions for Independent Repair Facilities** to complete the installation. The document is located on erWin.

## **6.5 – VAS 5054A Transmitter Head Setup**

Refer to the **VAS 5054A Transmitter Head – Bluetooth® & EDIC Configuration** to complete the installation. The document is located on erWin.

## **6.6 Windows® 7 Updates**

### **6.6.1 – General Information**

All VAS diagnostic devices must be kept up-to-date with the latest Windows security and vulnerability updates. However, dealership service or IT personnel tasked with maintaining both ODIS Service and Windows updates **must be aware of the following, and act accordingly:**

- The initial package of important Windows updates available for this Windows 7 installation may take considerable time to install and download (typically between 60 – 120 minutes, device, content and bandwidth dependent). As a result, we recommend that the initial selection, download and installation of Windows updates **be managed so that the update process takes place outside of workshop service hours.**

Instructions on how select and initiate Windows updates follow in the **Managed Windows Update** section below.

- **Under no circumstances** are **Internet Explorer (IE) versions 10** or **11** to be installed as part of the Managed Windows Update process.

## **ATTENTION!**


**Please inform all service personnel that under no circumstances are IE10 or IE11 updates to be downloaded and installed on devices updated with Windows 7!**

# Service Information

## 6.6.2 – Managed Windows Update Procedure

### Prerequisites:

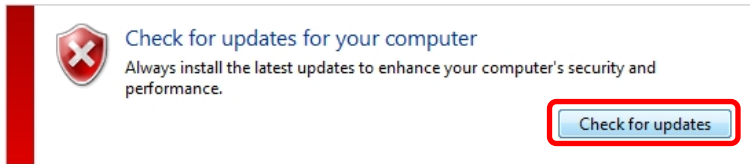
- ☐ Diagnostic device removed from service, after hours etc.
- ☐ Diagnostic device with active network connection.

1. Go to: **Windows (Start)**  **> Control Panel > Windows Update:**



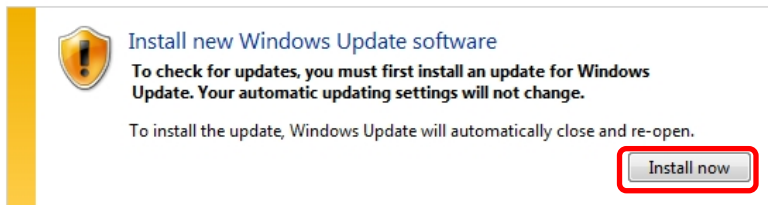
2. Click **Check for updates:**

Windows Update



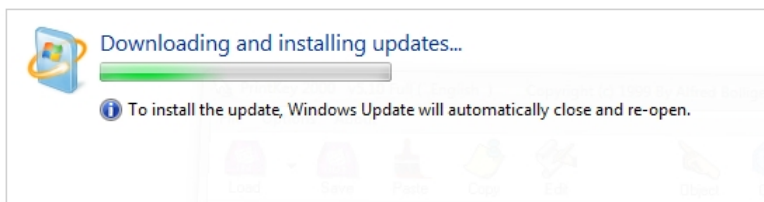
3. The first time after a Windows 7 installation, an update prompt for **Windows Update** may or may not appear. If so, click **Install now:**

Windows Update



4. **Wait** while an update for Windows Update is installed:

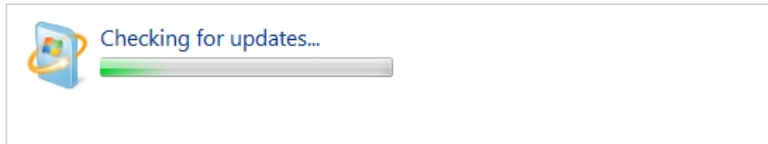
Windows Update



# Service Information

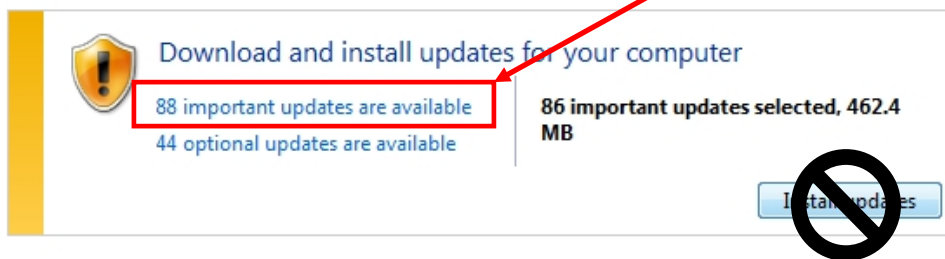
5. After the update closes and re-opens, **wait** while the system checks for updates:

Windows Update



6. When the results are displayed, click the **XX important updates are available** link:

Windows Update

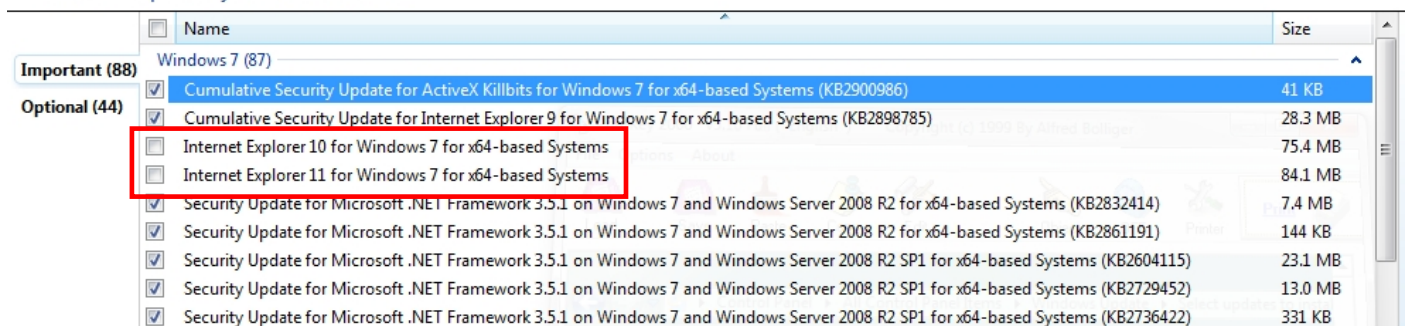


**Note:**

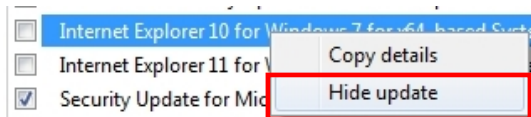
*The number of updates illustrated above **is for reference only!** The number of available updates will always vary depending on type of device and date when available updates are checked.*

7. **Deselect** the **Internet Explorer 10** and **Internet Explorer 11** updates from the update listing:

Select the updates you want to install

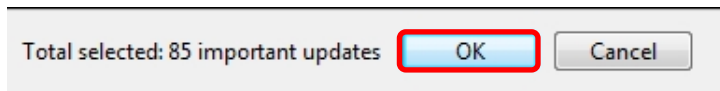


8. To prevent the IE updates from reappearing, **right click** the IE10 update and select **Hide update** from the dropdown. **Repeat** with the IE11 update:



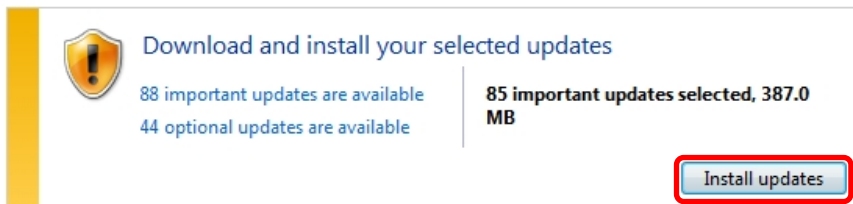
# Service Information

9. Click **OK** (at bottom frame):



10. Click **Install updates**:

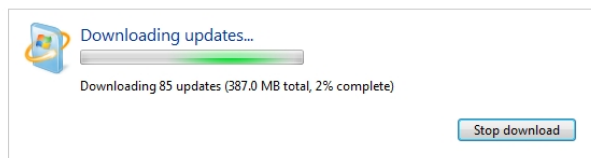
Windows Update



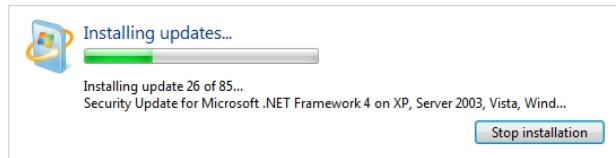
11. Accept any **Microsoft License Terms** if prompted, and then click **Finish**.

12. **Wait** while the updates are downloaded and installed (no user intervention is necessary):

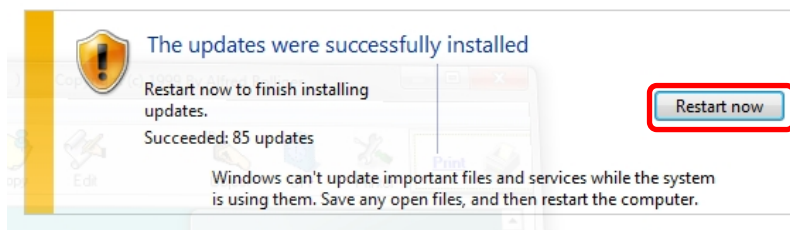
Windows Update



Windows Update



13



- Additional Windows update configurations are performed during the shut-down and restart routine.
- On completion, the device boots to the Windows desktop, and information prompt on the installed updates appears.

# Cautions & Warnings

**Please read these WARNINGS and CAUTIONS before proceeding with maintenance and repair work. You must answer that you have read and you understand these WARNINGS and CAUTIONS before you will be allowed to view this information.**

- If you lack the skills, tools and equipment, or a suitable workshop for any procedure described in this manual, we suggest you leave such repairs to an authorized Volkswagen retailer or other qualified shop. We especially urge you to consult an authorized Volkswagen retailer before beginning repairs on any vehicle that may still be covered wholly or in part by any of the extensive warranties issued by Volkswagen.
- Disconnect the battery negative terminal (ground strap) whenever you work on the fuel system or the electrical system. Do not smoke or work near heaters or other fire hazards. Keep an approved fire extinguisher handy.
- Volkswagen is constantly improving its vehicles and sometimes these changes, both in parts and specifications, are made applicable to earlier models. Therefore, part numbers listed in this manual are for reference only. Always check with your authorized Volkswagen retailer parts department for the latest information.
- Any time the battery has been disconnected on an automatic transmission vehicle, it will be necessary to reestablish Transmission Control Module (TCM) basic settings using the VAG 1551 Scan Tool (ST).
- Never work under a lifted vehicle unless it is solidly supported on stands designed for the purpose. Do not support a vehicle on cinder blocks, hollow tiles or other props that may crumble under continuous load. Never work under a vehicle that is supported solely by a jack. Never work under the vehicle while the engine is running.
- For vehicles equipped with an anti-theft radio, be sure of the correct radio activation code before disconnecting the battery or removing the radio. If the wrong code is entered when the power is restored, the radio may lock up and become inoperable, even if the correct code is used in a later attempt.
- If you are going to work under a vehicle on the ground, make sure that the ground is level. Block the wheels to keep the vehicle from rolling. Disconnect the battery negative terminal (ground strap) to prevent others from starting the vehicle while you are under it.
- Do not attempt to work on your vehicle if you do not feel well. You increase the danger of injury to yourself and others if you are tired, upset or have taken medicine or any other substances that may impair you or keep you from being fully alert.
- Never run the engine unless the work area is well ventilated. Carbon monoxide (CO) kills.
- Always observe good workshop practices. Wear goggles when you operate machine tools or work with acid. Wear goggles, gloves and other protective clothing whenever the job requires working with harmful substances.
- Tie long hair behind your head. Do not wear a necktie, a scarf, loose clothing, or a necklace when you work near machine tools or running engines. If your hair, clothing, or jewelry were to get caught in the machinery, severe injury could result.
- Do not re-use any fasteners that are worn or deformed in normal use. Some fasteners are designed to be used only once and are unreliable and may fail if used a second time. This includes, but is not limited to, nuts, bolts, washers, circlips and cotter pins. Always follow the recommendations in this manual - replace these fasteners with new parts where indicated, and any other time it is deemed necessary by inspection.

# Cautions & Warnings

- Illuminate the work area adequately but safely. Use a portable safety light for working inside or under the vehicle. Make sure the bulb is enclosed by a wire cage. The hot filament of an accidentally broken bulb can ignite spilled fuel or oil.
- Friction materials such as brake pads and clutch discs may contain asbestos fibers. Do not create dust by grinding, sanding, or by cleaning with compressed air. Avoid breathing asbestos fibers and asbestos dust. Breathing asbestos can cause serious diseases such as asbestosis or cancer, and may result in death.
- Finger rings should be removed so that they cannot cause electrical shorts, get caught in running machinery, or be crushed by heavy parts.
- Before starting a job, make certain that you have all the necessary tools and parts on hand. Read all the instructions thoroughly; do not attempt shortcuts. Use tools that are appropriate to the work and use only replacement parts meeting Volkswagen specifications. Makeshift tools, parts and procedures will not make good repairs.
- Catch draining fuel, oil or brake fluid in suitable containers. Do not use empty food or beverage containers that might mislead someone into drinking from them. Store flammable fluids away from fire hazards. Wipe up spills at once, but do not store the oily rags, which can ignite and burn spontaneously.
- Use pneumatic and electric tools only to loosen threaded parts and fasteners. Never use these tools to tighten fasteners, especially on light alloy parts. Always use a torque wrench to tighten fasteners to the tightening torque listed.
- Keep sparks, lighted matches, and open flame away from the top of the battery. If escaping hydrogen gas is ignited, it will ignite gas trapped in the cells and cause the battery to explode.
- Be mindful of the environment and ecology. Before you drain the crankcase, find out the proper way to dispose of the oil. Do not pour oil onto the ground, down a drain, or into a stream, pond, or lake. Consult local ordinances that govern the disposal of wastes.
- The air-conditioning (A/C) system is filled with a chemical refrigerant that is hazardous. The A/C system should be serviced only by trained automotive service technicians using approved refrigerant recovery/recycling equipment, trained in related safety precautions, and familiar with regulations governing the discharging and disposal of automotive chemical refrigerants.
- Before doing any electrical welding on vehicles equipped with anti-lock brakes (ABS), disconnect the battery negative terminal (ground strap) and the ABS control module connector.
- Do not expose any part of the A/C system to high temperatures such as open flame. Excessive heat will increase system pressure and may cause the system to burst.
- When boost-charging the battery, first remove the fuses for the Engine Control Module (ECM), the Transmission Control Module (TCM), the ABS control module, and the trip computer. In cases where one or more of these components is not separately fused, disconnect the control module connector(s).
- Some of the vehicles covered by this manual are equipped with a supplemental restraint system (SRS), that automatically deploys an airbag in the event of a frontal impact. The airbag is operated by an explosive device. Handled improperly or without adequate safeguards, it can be accidentally activated and cause serious personal injury. To guard against personal injury or airbag system failure, only trained Volkswagen Service technicians should test, disassemble or service the airbag system.



## Cautions & Warnings

- Do not quick-charge the battery (for boost starting) for longer than one minute, and do not exceed 16.5 volts at the battery with the boosting cables attached. Wait at least one minute before boosting the battery a second time.
- Never use a test light to conduct electrical tests of the airbag system. The system must only be tested by trained Volkswagen Service technicians using the VAG 1551 Scan Tool (ST) or an approved equivalent. The airbag unit must never be electrically tested while it is not installed in the vehicle.
- Some aerosol tire inflators are highly flammable. Be extremely cautious when repairing a tire that may have been inflated using an aerosol tire inflator. Keep sparks, open flame or other sources of ignition away from the tire repair area. Inflate and deflate the tire at least four times before breaking the bead from the rim. Completely remove the tire from the rim before attempting any repair.
- When driving or riding in an airbag-equipped vehicle, never hold test equipment in your hands or lap while the vehicle is in motion. Objects between you and the airbag can increase the risk of injury in an accident.

**I have read and I understand these Cautions and Warnings.**

