

Volkswagen Passat B6 2005 - > (B6)

Interior rearview mirror

Automatically dimming interior rearview mirror

The automatically dimming interior rearview mirror dims progressively when the driver is "blinded" from the rear.

It consists of a mirror element and an electrical element with two photo sensors.

The electronic element registers light incidence from the front and rear through the photo sensors.

If the incident light from the rear is greater than that from the front, a current flows through the electronic element to a conductive coating.

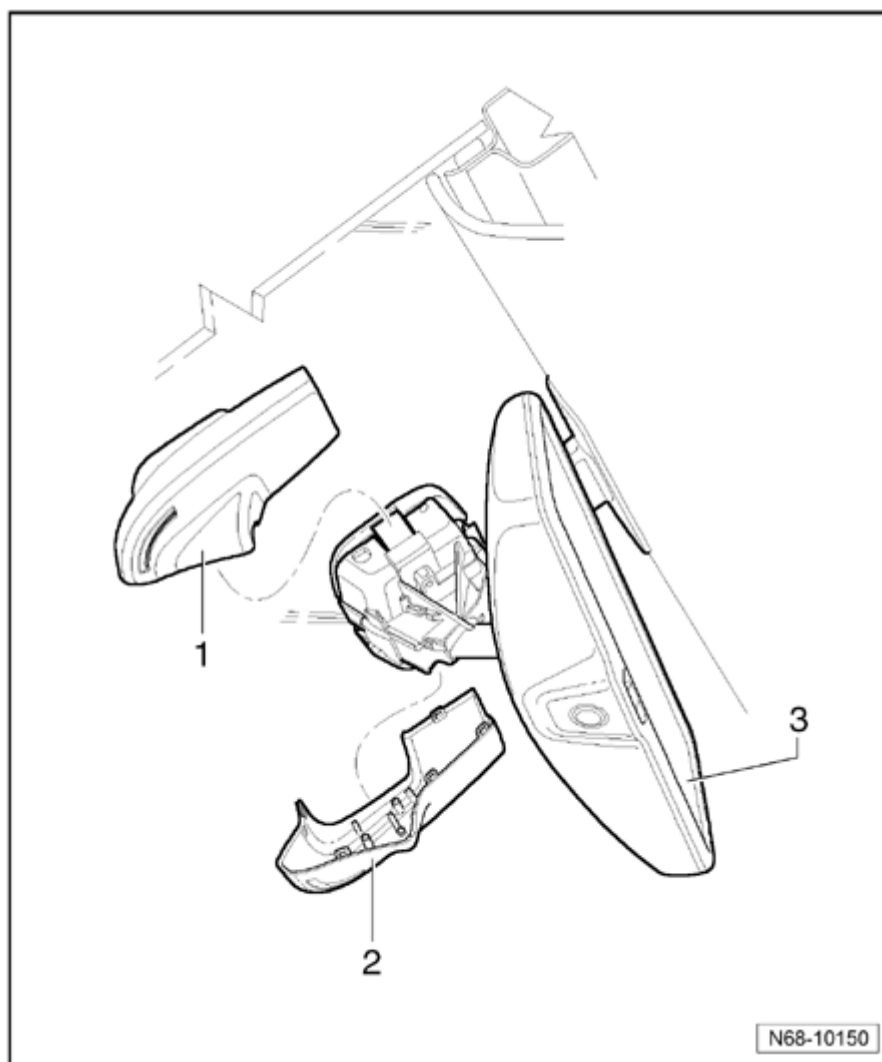
The applied current changes the color of the electrolytes. The electrolyte becomes darker, the greater the current is. The incident light will be reflected to a lesser degree.

The dimming function cuts out when reverse gear is engaged. So one can back out of a dark garage, for example, using the rearview mirror.

Interior rearview mirror with rain sensor, removing and installing

Removing

- In vehicles with rain sensor, switch ignition off.
- Remove left - **1** - and right cover caps - **2** - outward at the same time.
- Carefully slide rearview mirror - **3** - , along windshield, down off mount.



- Operate connector socket locking tabs and disconnect wiring harness from rearview mirror.

Installing

- Installation is performed in the reverse order of removal.

Holding plate for interior rearview mirror with rain sensor, bonding

Removal of windshield is no longer necessary, as with previous repair procedure.

At the same time, it is possible to re-use the old, detached mirror base.

Preparing windshield

- All adhesive and primer residue must be removed up to ceramic coating.

- Clean adhesion surface using cleaning solution D 009 401 04 .
- Dry off period must be at least 10 minutes.
- Apply glass-/paint primer D 009 200 02 .
- Dry off period until bonding: at least 10 minutes to a maximum of 1 hour.

Preparing detached and new mirror base

- Use a tool to remove adhesive residue (only for detached mirror base).
- Prepare adhesive surface by wet-sanding with fine emery paper (800-1200 grit) until water remains (does not bead and run off) on adhesive surface.
- Then clean using cleaning solution D 009 401 04 .

Bonding mirror base

- Apply two part polyurethane adhesive D 180 KD2 A1 direct to prepared and cleaned mirror base adhesive surface.
- Adhesive bead diameter: approx. 2.5 to 3 mm.
- Immediately after applying adhesive on mirror base, press onto prepared windshield.
- Align mirror base on its designated position on ceramic coating and secure using adhesive tape.

Cleaning and removing excess adhesive

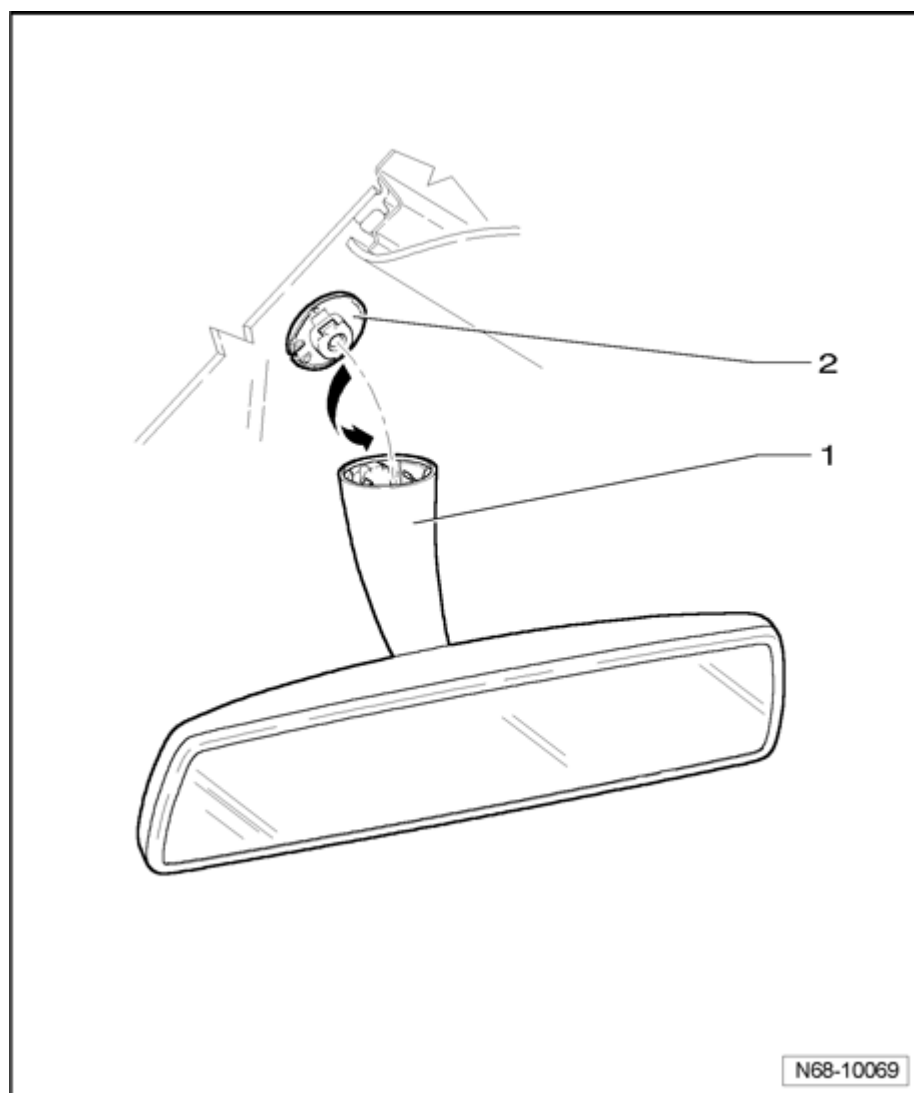
- Carefully remove adhesive tape 0.5 to 1 hour after attaching mirror base.
- Remove excess soft adhesive all around using spatula.
- Then remove any remaining excess adhesive using a primer applicator or rag, saturated with cleaning solution.

Installation of rain sensor and mirror

- Mirror can be installed 2.5 hours after mirror base has been attached!

Interior rearview mirror, removing and installing

Removing



- Rotate interior mirror - **1** - 90 °
counterclockwise - **arrow** - and remove
it from adhesive plate - **2** - .

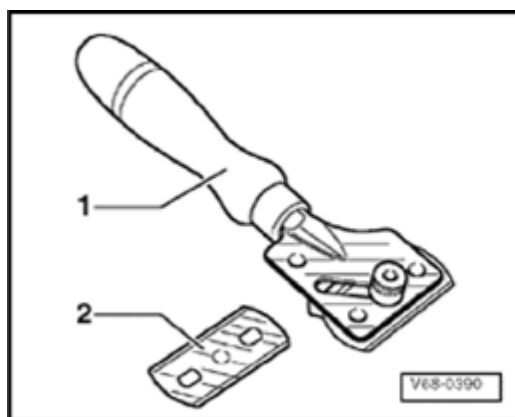
Installing

- Installation is performed in the reverse order of removal.

Holding plate for interior rearview mirror without rain sensor, bonding

Materials

- Glass/metal glue set D 000 703 A1 (interior mirror, standard)

**Tools**

1 - Window scraper (commercially available)

2 - Blade (commercially available)

- Remove retaining plate from mirror base.
- Remove PUR adhesive material from retaining plate with wire brush.
- Grind the three spacer knobs off of adhesive surface. To do this, lay sandpaper (360/400 grit) on flat surface.
- Keep sanded surface free of dirt and grease.
- Scrape off PUR adhesive and primer from windshield down to ceramic layer using glass scraper.
- Clean adhesive surface with adhesive remover D 002 000 10 or cleaning solution D 009 401 04.

Warning!

Do not damage ceramic layer. Scratches always remain visible.

- Cut nylon mesh to exact dimensions of mirror base.

Note:

- *Protective gloves (rubber gloves) should be worn.*

- Spread thick layer of adhesive evenly on mirror base.
- Lay nylon mesh on mirror base.
- While continuing to apply adhesive with tube dab nylon mesh.

30 seconds are available from laying the nylon mesh on the adhesive to pressing on the windshield.

- Press mirror base (without force) onto windshield and hold for 15 seconds.
- Use a rag to remove excess adhesive.

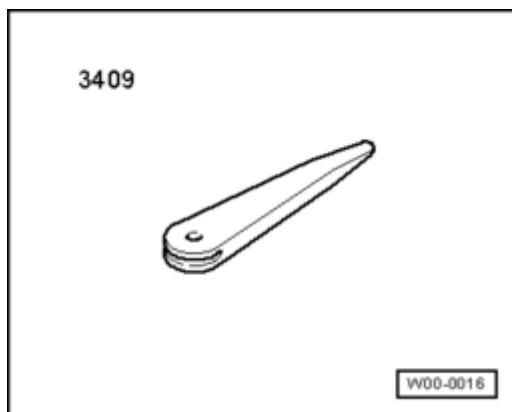
Note:

- *Mirror can be installed after 15 minutes.*

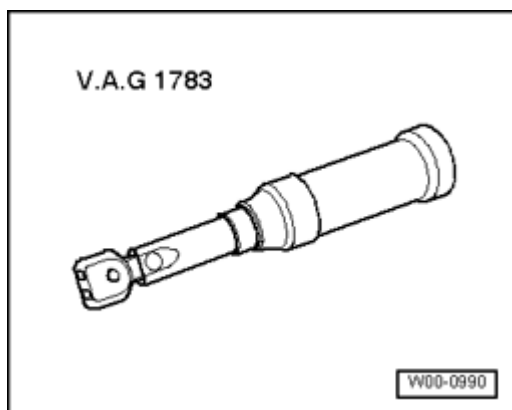
Storage compartments, covers and trim

Tools

Required special tools, workshop equipment, testing and measuring equipment, and aids



- Trim removal wedge 3409



- Torque wrench V.A.G 1783

Center console (without foldable armrest), removing and installing

Note:

- *To provide a better overview, the seats are not shown in the following illustration. It is not necessary to remove the seats.*

Removing

- Remove footwell trim ⇒ [68-2, Footwell trim, removing](#)

and installing

- Remove front ashtray or front compartment ⇒ [68-2, Front ashtray or front storage compartment, removing and installing](#)
- Remove Infotainment trim ⇒ [68-2, Infotainment trim, removing and installing](#)
- Remove Climatronic/Climatic cover ⇒ [68-2, Climatronic/Climatic cover, removing and installing](#)

Vehicles without Climatronic/Climatic

- Remove heater and ventilation controls

⇒ *Repair Manual, Heating Air Conditioning, Repair Group 80, Heating, Ventilation*

Vehicles with Climatic

- Remove heating and ventilation controls

⇒ *Repair Manual, Heating Air Conditioning, Repair Group 87, Air conditioning*

Vehicles with Climatronic

- Remove Climatronic operating and display unit

⇒ *Repair Manual, Heating Air Conditioning, Repair Group 87, Air conditioning*

- Remove carpet mat - **1** - from center console.

- Remove the two bolts - **2** - .

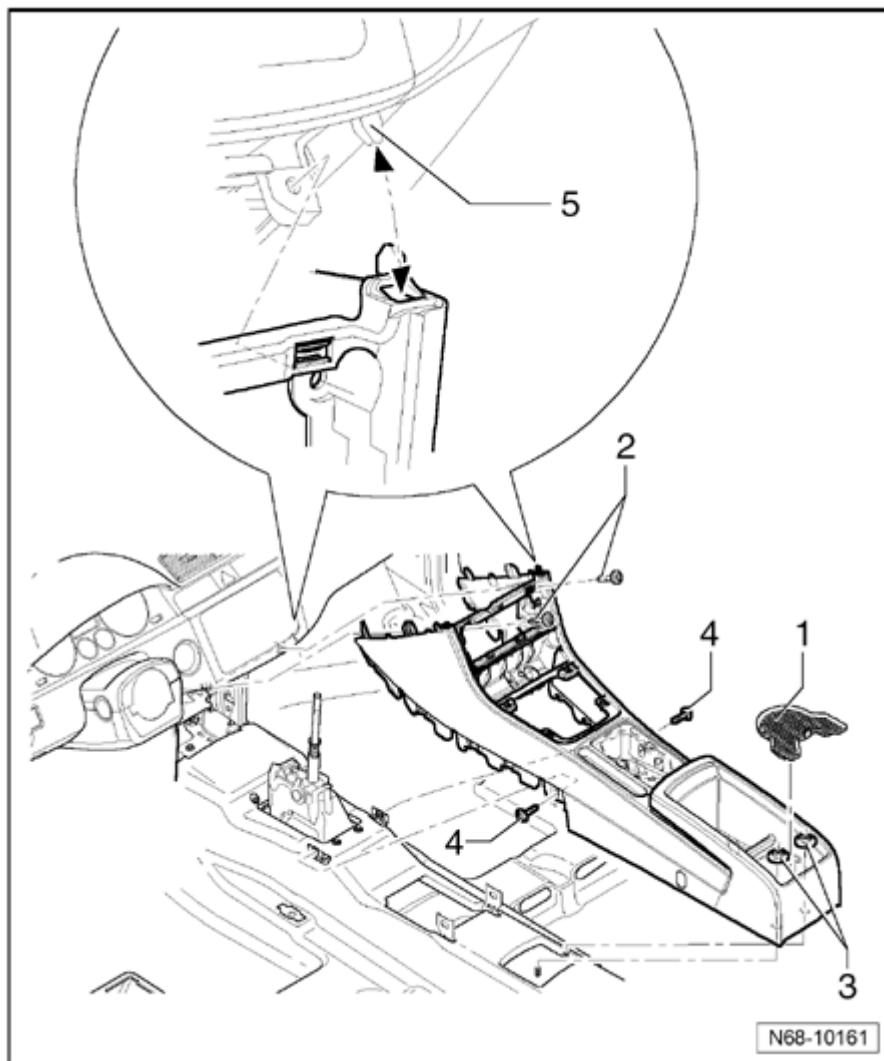
- Remove the two nuts - **3** - .

Note :

- *To remove the following screws - **4** - , the seats must be moved accordingly.*

- Remove the two bolts - **4** - .

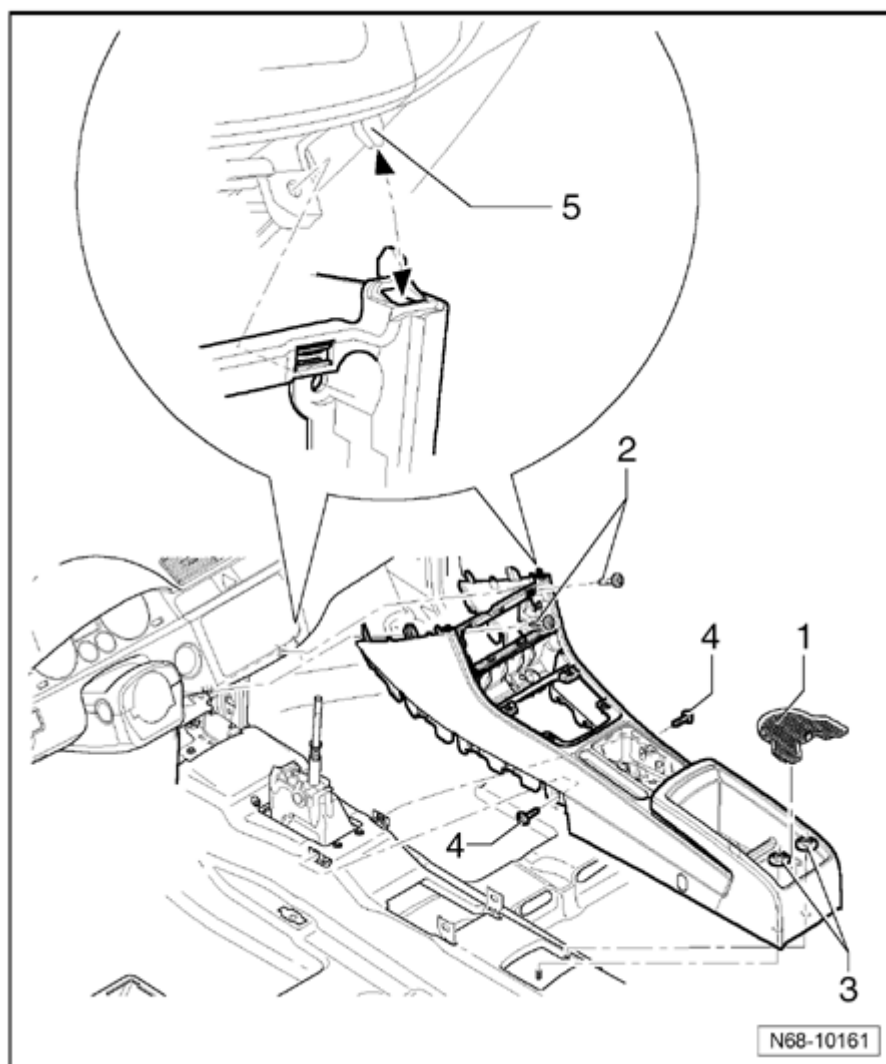
Volkswagen Technical Site: <http://volkswagen.msk.ru> <http://vwts.info> <http://vwts.ru>
огромный архив документации по автомобилям Volkswagen, Skoda, Seat, Audi



- Raise rear part of center console and loosen console from centering tabs - **5** - in instrument panel.

Installing

- Insert center console in the two centering tabs - **5** - in instrument panel.
- Secure center console with two screws - **2** - (1.5 Nm).
- Bolt in center console in rear area with two nuts - **3** - (6 Nm).
- Secure center console in center and side area with two bolts - **4** - (1.5 Nm).



- Lay carpet mat - **1** - in center console.

Rest of installation of center console is the reverse order of removal.

Center console (with foldable armrest), removing and installing

Note:

- *To provide a better overview, the seats are not shown in the following illustration. It is not necessary to remove the seats.*

Removing

- Remove footwell trim ⇒ [68-2, Footwell trim, removing and installing](#)
- Remove front ashtray or front compartment ⇒ [68-2, Front](#)

ashtray or front storage compartment, removing and installing

- Remove Infotainment trim ⇒ [68-2, Infotainment trim, removing and installing](#)
- Remove Climatronic/Climatic cover ⇒ [68-2, Climatronic/Climatic cover, removing and installing](#)

Vehicles without Climatronic/Climatic

- Remove heater and ventilation controls

⇒ *Repair Manual, Heating Air Conditioning, Repair Group 80, Heating, Ventilation*

Vehicles with Climatic

- Remove heating and ventilation controls

⇒ *Repair Manual, Heating Air Conditioning, Repair Group 87, Air conditioning*

Vehicles with Climatronic

- Remove Climatronic operating and display unit

⇒ *Repair Manual, Heating Air Conditioning, Repair Group 87, Air conditioning*

- Remove rear trim ⇒ [68-2, Rear trim, removing and installing](#)

- Remove the two bolts - **1** - .

- Remove the two nuts - **2** - .

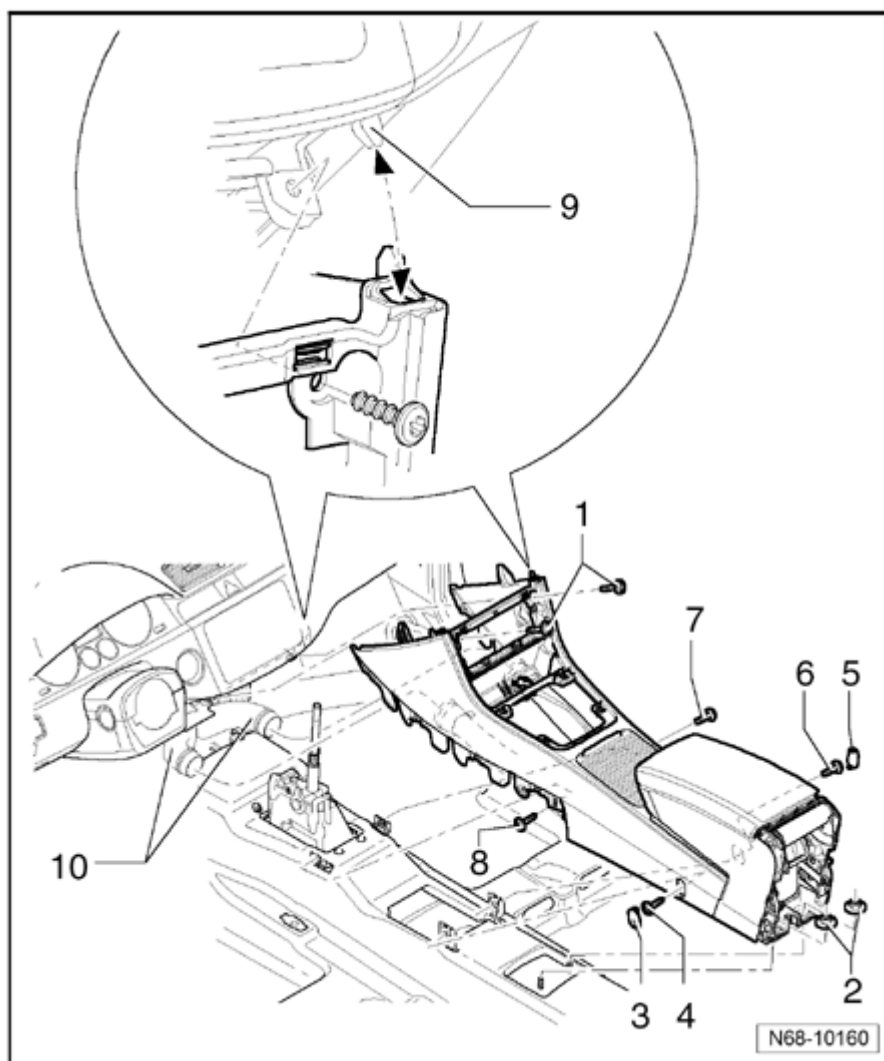
Note :

- *In order to remove screws - **4** - , - **6** - , - **7** - and - **8** - , seats must be moved accordingly.*

- Remove cover cap - **3** - and remove screw - **4** - .

- Remove cover cap - **5** - and remove screw - **6** - .

- Remove bolts - **7** - and - **8** - .



- Raise rear part of center console and loosen console from centering tabs - **9** - in instrument panel.

Installing

- Insert center console in the two centering tabs - **9** - in instrument panel.

Note :

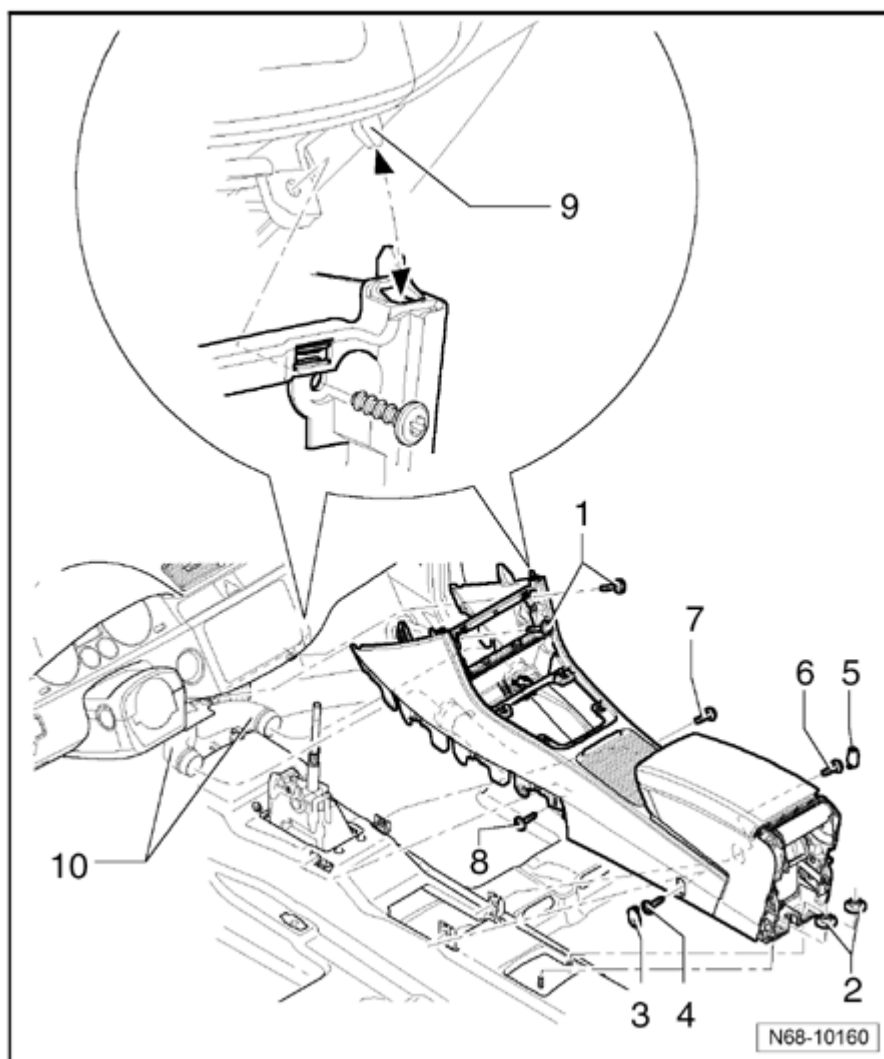
- *Check whether heating and cooling channels - **10** - are precisely fit to the heating and cooling channels in the center console.*

- Secure center console with two screws - **1** - (1.5 Nm).
- Bolt in center console in rear area with

two nuts - **2** - (6 Nm).

- Secure center console in rear left side area with bolt - **4** - (6 Nm) and seal opening with cover cap - **3** - .

- Secure center console in rear right side area with bolt - **6** - (6 Nm) and seal opening with cover cap - **5** - .



- Secure center console in center and side area with two bolts - **7** - and - **8** - (1.5 Nm).

Rest of installation of center console is the reverse order of removal.

Footwell trim, removing and installing

Note:

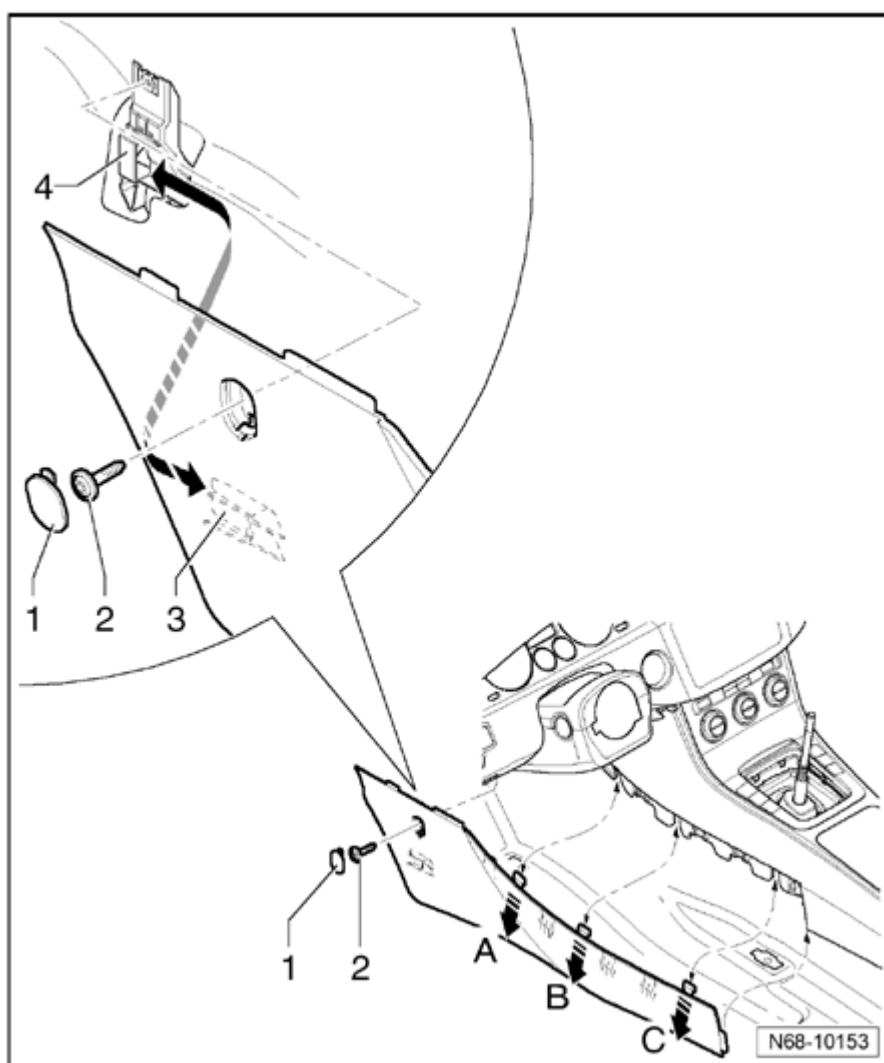
- *Removal and installation is described for the left*

side, it is the same on the right side.

- *To provide a better illustration, the steering wheel parts of the gear selector and drivers seat are not shown.*

Removing

- Unclip cover - **1** - using a small screwdriver.
- Remove bolt - **2** - (1.5 Nm).
- Remove trim from mounts in center console - **arrows A, B and C** - .



- Pull trim in area of front guide - **3** - out of mount in footwell - **4** - - **arrow** - .

Installing

- Installation is performed in the reverse order of removal.

Front ashtray or front storage compartment, removing and installing

Note:

- *To provide a better illustration, the shifter knob and boot are not shown in the illustration.*

Removing

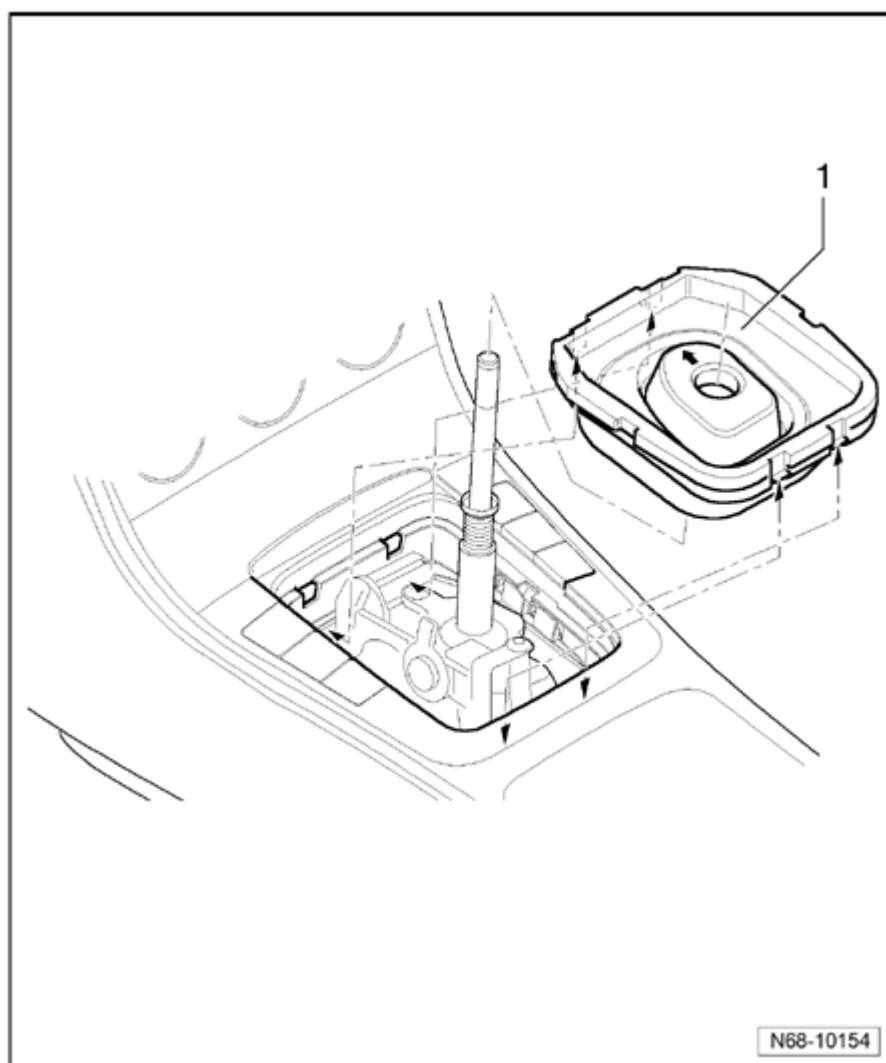
- Switch off ignition.

Vehicles with manual transmission

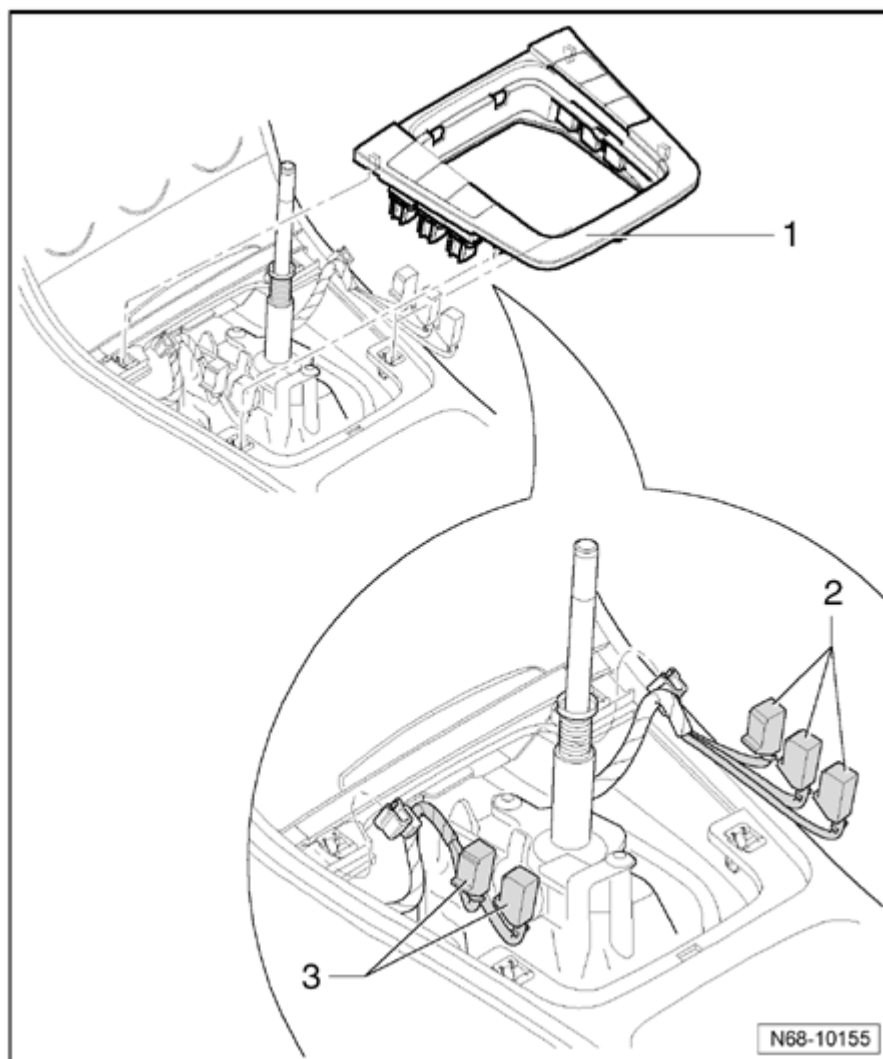
- Remove shifter boot upward out of mounts.
- Remove gear selector insulation - **1** - from shifter guide rail.

Note :

- *Note - **arrow** - when installing insulation, it must point in direction of travel.*



- Remove shifter cover - **1** - upward out of center console.



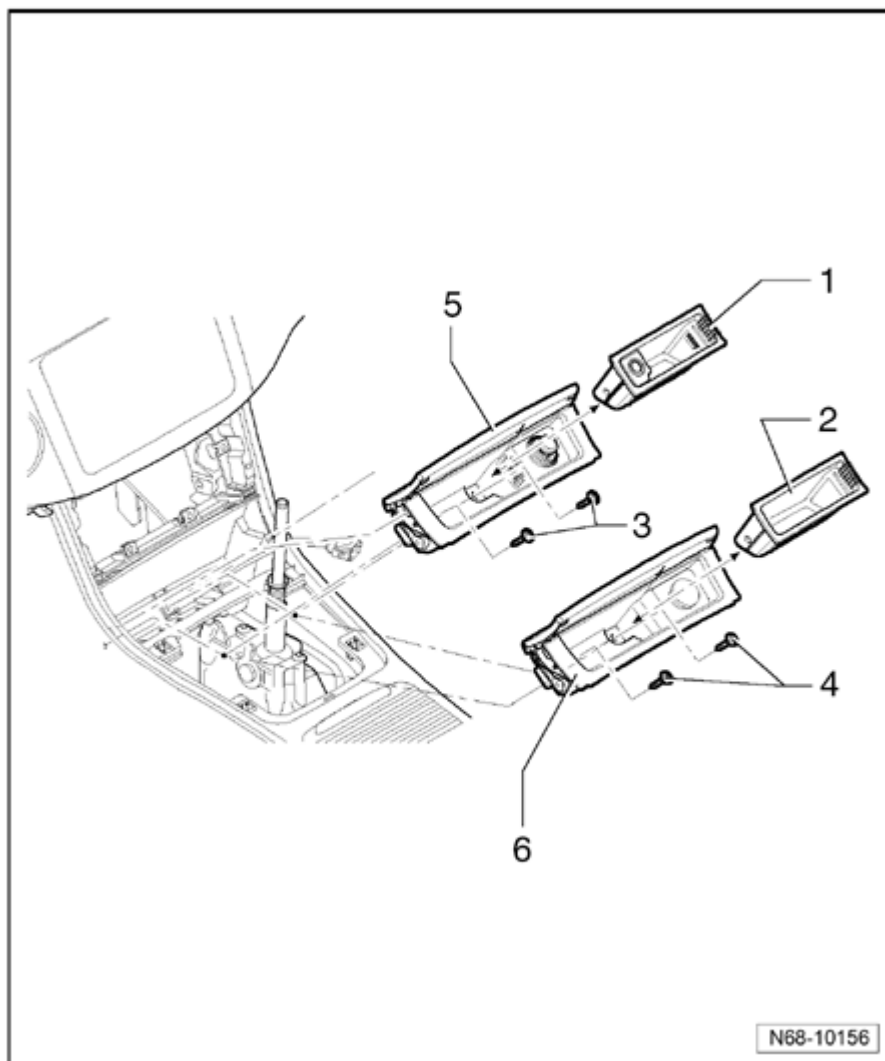
- Depending on vehicle equipment, disconnect wiring harnesses - **2** - and - **3** - from cover.

Note :

- *The heating or cooling mechanism is not shown in the illustration.*

- Remove ashtray insert - **1** - or compartment - **2** - .

- remove two screws - **3** - and - **4** - (1.5 Nm).



- Remove ashtray - **5** - or storage compartment - **6** - from center console and disconnect wiring harness if necessary.

Installing

- Installation is performed in the reverse order of removal.

Infotainment trim, removing and installing

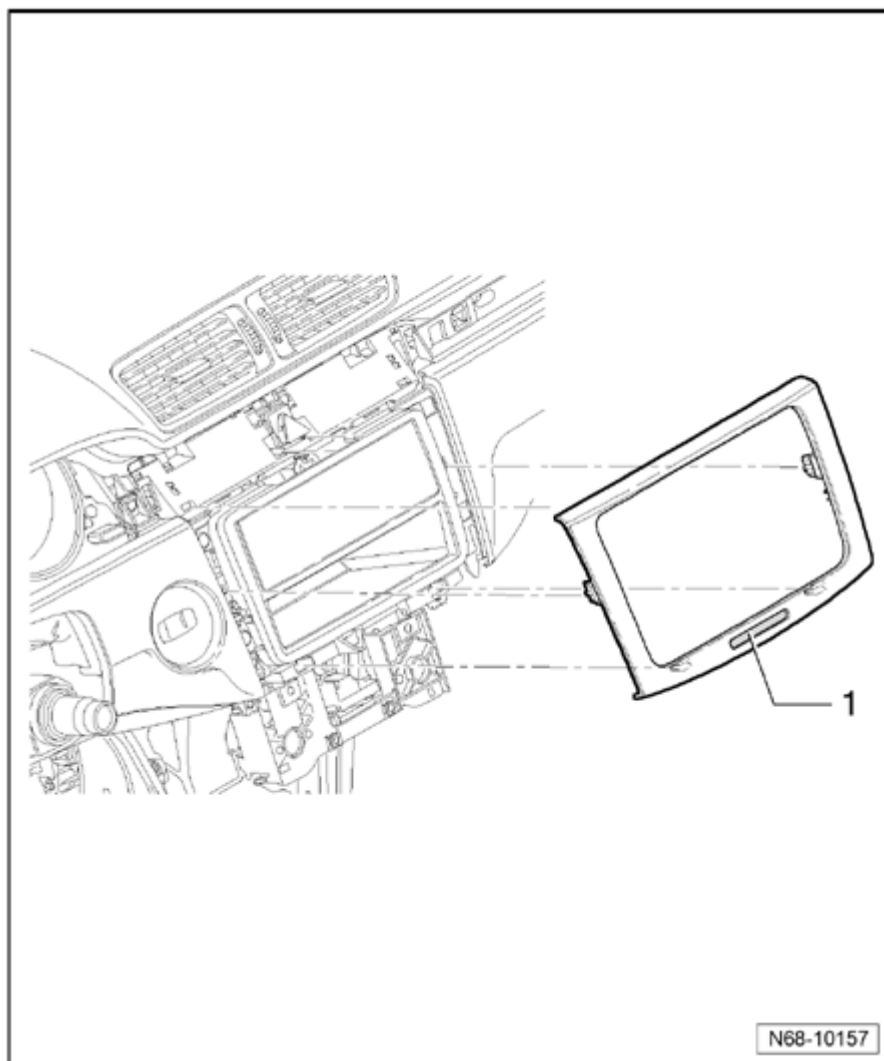
Note:

- *The adjacent components are only partially shown in the illustration.*

Removing

- Switch off ignition.

- Remove trim from mountings in instrument panel.



- If present, disconnect wiring harness from "PASSENGER AIRBAG OFF" indicator light - **1** - .

Installing

- Installation is performed in the reverse order of removal.

Climatronic/Climatic cover, removing and installing

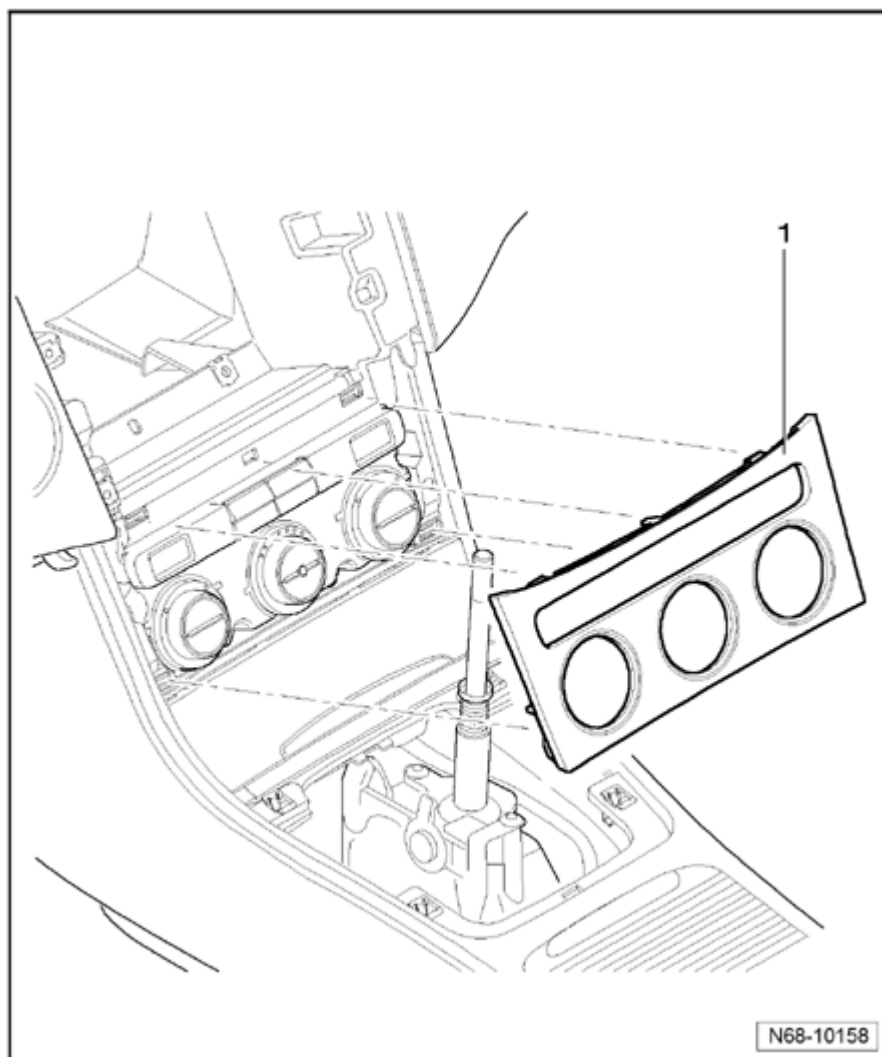
Note:

- *Removal and installation of cover is described for vehicles with Climatronic.*
- *Removal and installation of cover for vehicles with Climatic is the same.*

- *The adjacent components are only partially shown in the illustration.*

Removing

- Remove Infotainment trim ⇒ [68-2, Infotainment trim, removing and installing](#)



- Remove trim - **1** - from mountings in instrument panel.

Installing

- Installation is performed in the reverse order of removal.

Rear trim, removing and installing

Removing

- Switch off ignition.

Vehicles with 120 Volt socket

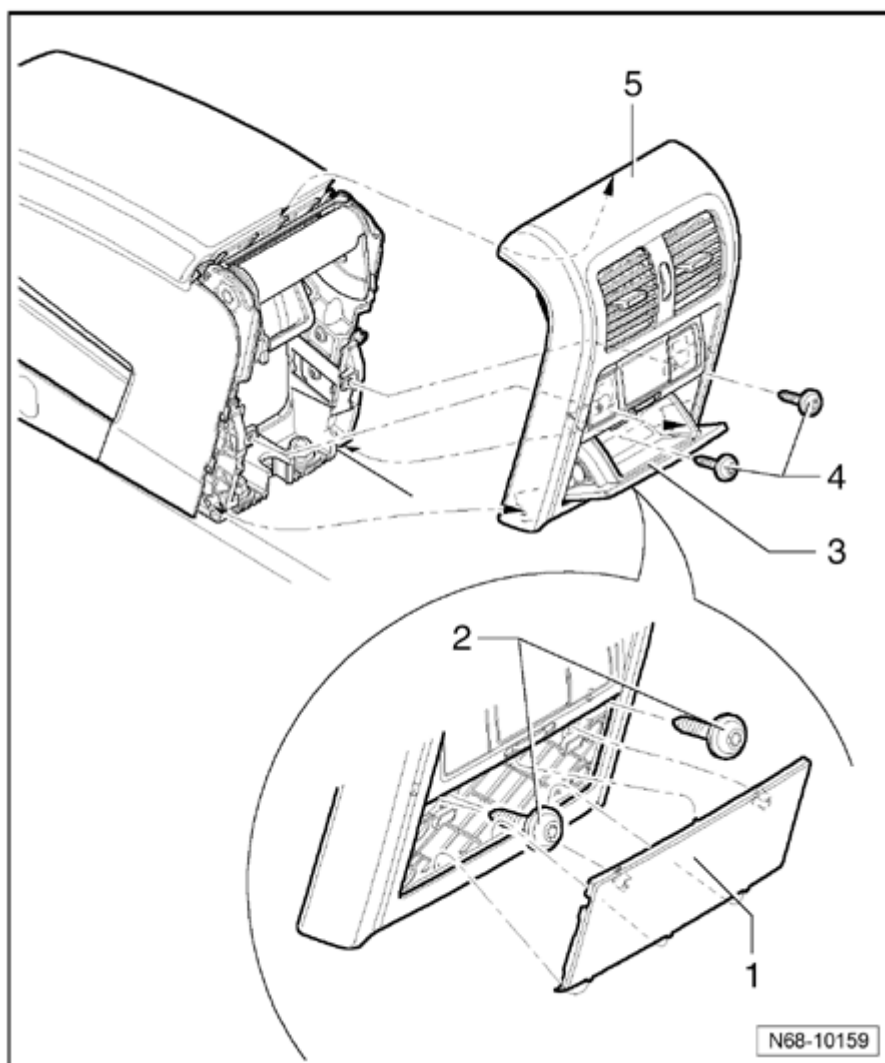
- Pry trim - **1** - out of mounts and remove two bolts - **2** - (1.5 Nm).

Vehicles with a storage compartment

- Open storage compartment - **3** - and remove two screws - **4** - (1.5 Nm).

All vehicles

- Remove rear trim from mounts in center console.



- Depending on vehicle equipment, disconnection wiring harnesses from rear trim - **5** - .

Installing

- Installation is performed in the reverse order of removal.

Center console air duct, removing and installing

Removing

- Remove front seats ⇒ [72-1, Front seat, removing and installing](#)
- Remove footwell trim ⇒ [68-2, Footwell trim, removing and installing](#)
- Remove front ashtray or front compartment ⇒ [68-2, Front ashtray or front storage compartment, removing and installing](#)
- Remove Infotainment trim ⇒ [68-2, Infotainment trim, removing and installing](#)
- Remove Climatronic/Climatic cover ⇒ [68-2, Climatronic/Climatic cover, removing and installing](#)

Vehicles without Climatronic/Climatic

- Remove heater and ventilation controls

⇒ *Repair Manual, Heating Air Conditioning, Repair Group 80, Heating, Ventilation*

Vehicles with Climatic

- Remove heating and ventilation controls

⇒ *Repair Manual, Heating Air Conditioning, Repair Group 87, Air conditioning*

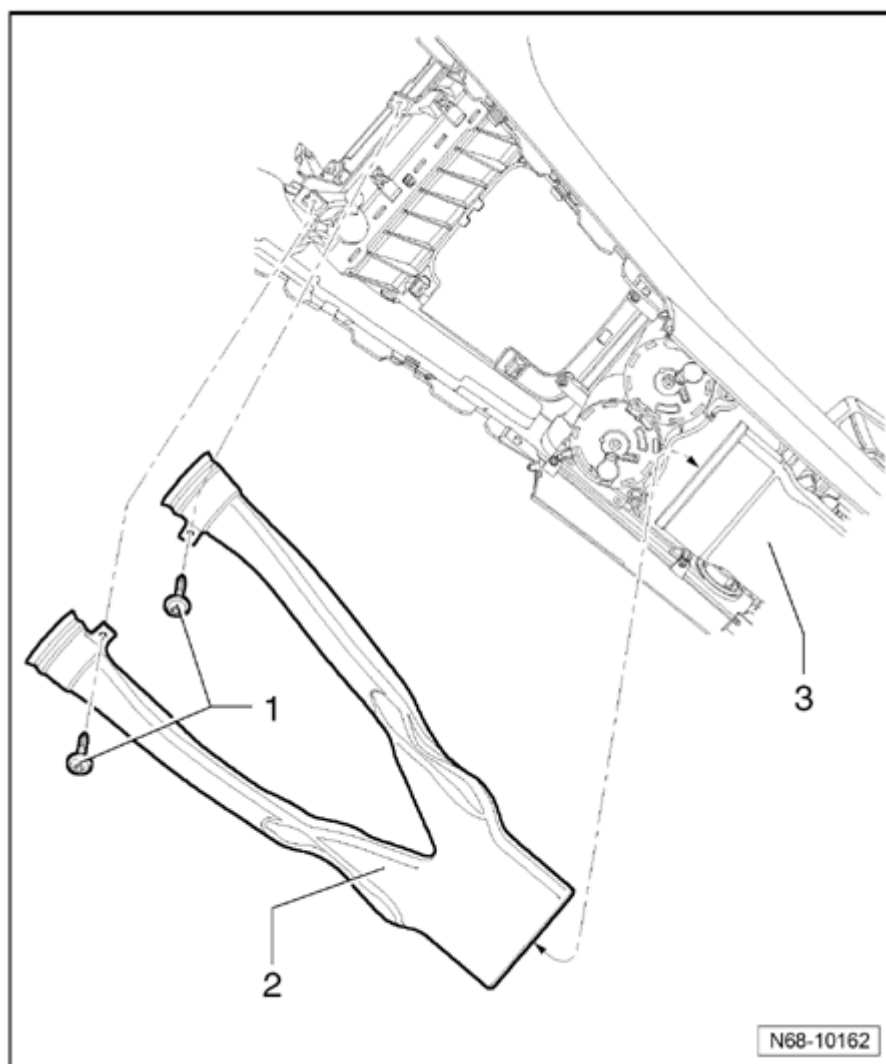
Vehicles with Climatronic

- Remove Climatronic operating and display unit

⇒ *Repair Manual, Heating Air Conditioning, Repair Group 87, Air conditioning*

- Remove rear trim ⇒ [68-2, Rear trim, removing and installing](#)

- Remove center console (with foldable armrest) ⇒ [68-2, Center console \(with foldable armrest\), removing and installing](#)



- Remove two screws - **1** - (1.5 Nm) and remove front air duct - **2** - from rear air duct - **3** - .

Installing

- Installation is performed in the reverse order of removal.

Center console storage compartment (without foldable armrest), removing and installing

Removing

- Remove front seats ⇒ [72-1, Front seat, removing and installing](#)
- Remove footwell trim ⇒ [68-2, Footwell trim, removing and installing](#)
- Remove front ashtray or front compartment ⇒ [68-2, Front ashtray or front storage compartment, removing and](#)

[installing](#)

- Remove Infotainment trim ⇒ [68-2, Infotainment trim, removing and installing](#)

- Remove Climatronic/Climatic cover ⇒ [68-2, Climatronic/Climatic cover, removing and installing](#)

Vehicles without Climatronic/Climatic

- Remove heater and ventilation controls

⇒ *Repair Manual, Heating Air Conditioning, Repair Group 80, Heating, Ventilation*

Vehicles with Climatic

- Remove heating and ventilation controls

⇒ *Repair Manual, Heating Air Conditioning, Repair Group 87, Air conditioning*

Vehicles with Climatronic

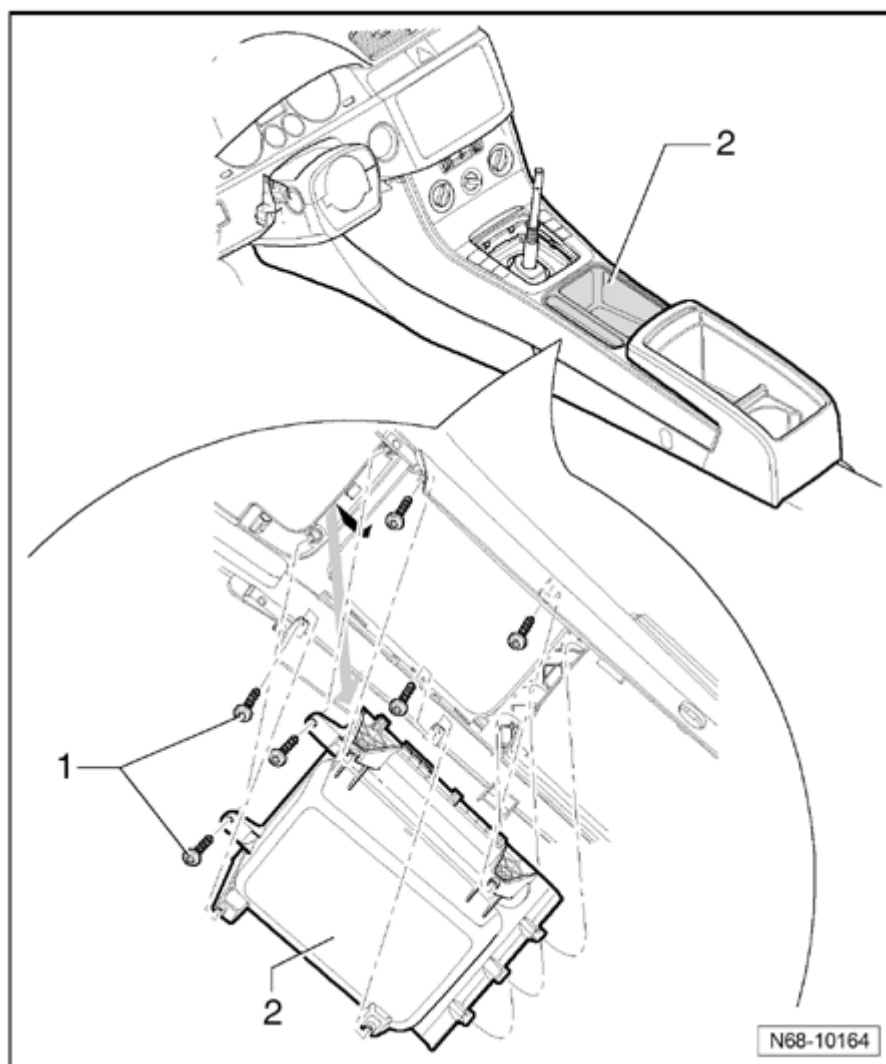
- Remove Climatronic operating and display unit

⇒ *Repair Manual, Heating Air Conditioning, Repair Group 87, Air conditioning*

- Remove center console (without foldable armrest) ⇒ [68-2, Center console \(without foldable armrest\), removing and installing](#)

- Remove six screws - **1** - (1.5 Nm).

- Lower storage compartment - **2** - slightly in front area.



- Slide storage compartment forward and remove it downward from center console
- **arrow** - .

Installing

- Installation is performed in the reverse order of removal.

Center console storage compartment (without foldable armrest), removing and installing

Removing

- Remove front seats ⇒ [72-1, Front seat, removing and installing](#)
- Remove footwell trim ⇒ [68-2, Footwell trim, removing and installing](#)
- Remove front ashtray or front compartment ⇒ [68-2, Front ashtray or front storage compartment, removing and](#)

[installing](#)

- Remove Infotainment trim ⇒ [68-2, Infotainment trim, removing and installing](#)
- Remove Climatronic/Climatic cover ⇒ [68-2, Climatronic/Climatic cover, removing and installing](#)

Vehicles without Climatronic/Climatic

- Remove heater and ventilation controls

⇒ *Repair Manual, Heating Air Conditioning, Repair Group 80, Heating, Ventilation*

Vehicles with Climatic

- Remove heating and ventilation controls

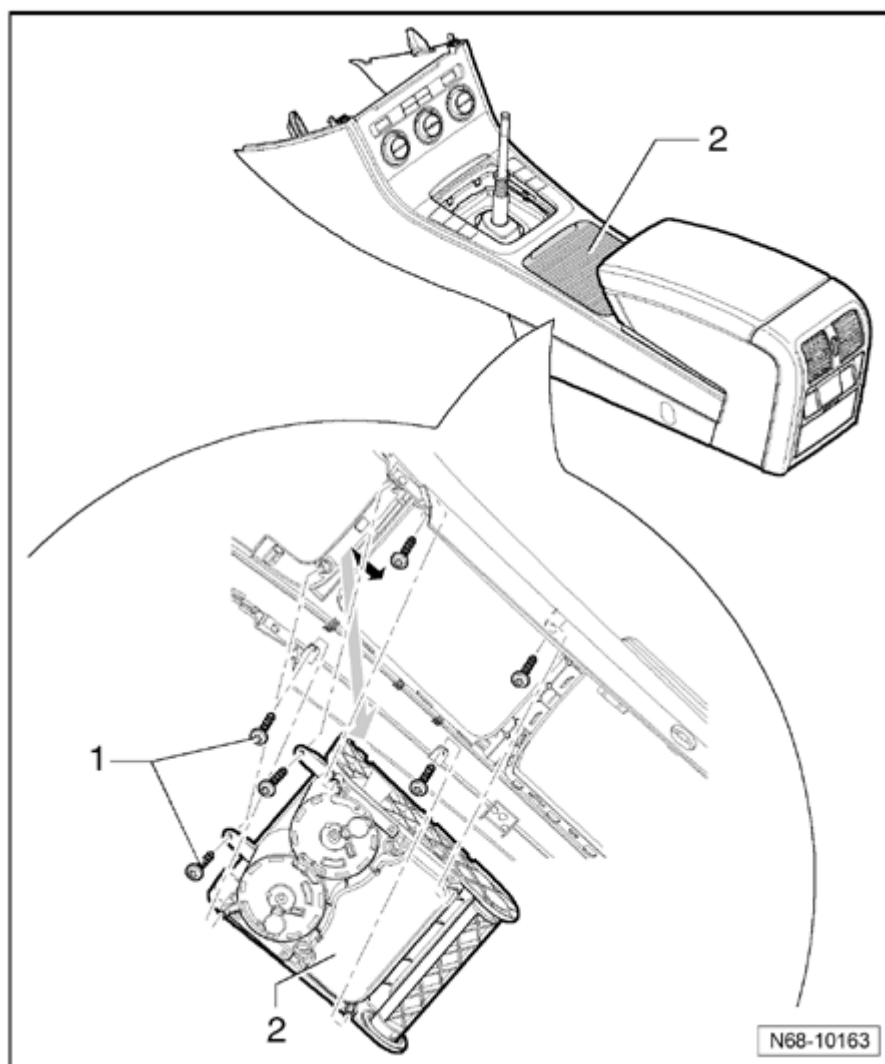
⇒ *Repair Manual, Heating Air Conditioning, Repair Group 87, Air conditioning*

Vehicles with Climatronic

- Remove Climatronic operating and display unit

⇒ *Repair Manual, Heating Air Conditioning, Repair Group 87, Air conditioning*

- Remove rear trim ⇒ [68-2, Rear trim, removing and installing](#)
- Remove center console (with foldable armrest) ⇒ [68-2, Center console \(with foldable armrest\), removing and installing](#)
- Remove center console air duct ⇒ [68-2, Center console air duct, removing and installing](#)
- Remove six screws - **1** - (1.5 Nm).
- Lower storage compartment - **2** - slightly in front area.



- Slide storage compartment forward and remove it downward from center console
- **arrow** - .

Installing

- Installation is performed in the reverse order of removal.

Center console extension (without foldable armrest), removing and installing

Removing

- Remove front seats ⇒ [72-1, Front seat, removing and installing](#)
- Remove footwell trim ⇒ [68-2, Footwell trim, removing and installing](#)
- Remove front ashtray or front compartment ⇒ [68-2, Front ashtray or front storage compartment, removing and](#)

[installing](#)

- Remove Infotainment trim ⇒ [68-2, Infotainment trim, removing and installing](#)
- Remove Climatronic/Climatic cover ⇒ [68-2, Climatronic/Climatic cover, removing and installing](#)

Vehicles without Climatronic/Climatic

- Remove heater and ventilation controls

⇒ *Repair Manual, Heating Air Conditioning, Repair Group 80, Heating, Ventilation*

Vehicles with Climatic

- Remove heating and ventilation controls

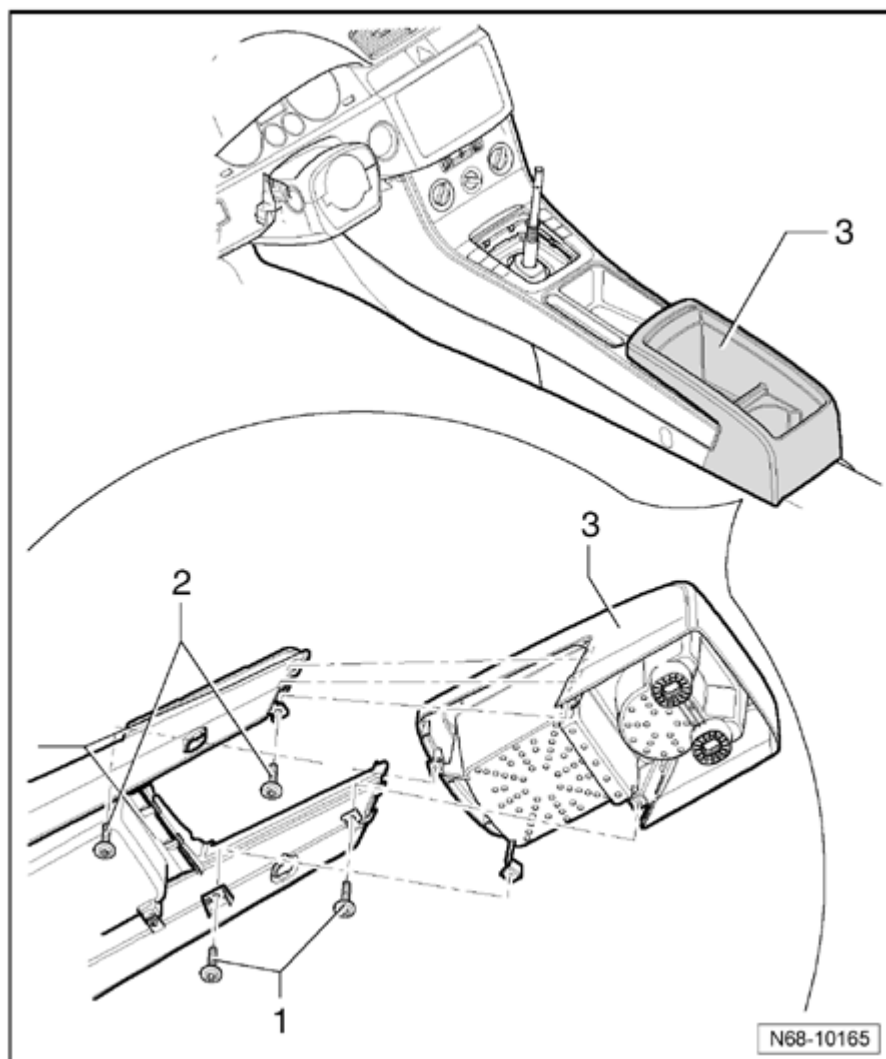
⇒ *Repair Manual, Heating Air Conditioning, Repair Group 87, Air conditioning*

Vehicles with Climatronic

- Remove Climatronic operating and display unit

⇒ *Repair Manual, Heating Air Conditioning, Repair Group 87, Air conditioning*

- Remove center console (without foldable armrest) ⇒ [68-2, Center console \(without foldable armrest\), removing and installing](#)
- Remove the two sets of bolts - **1** - and
- **2** - .



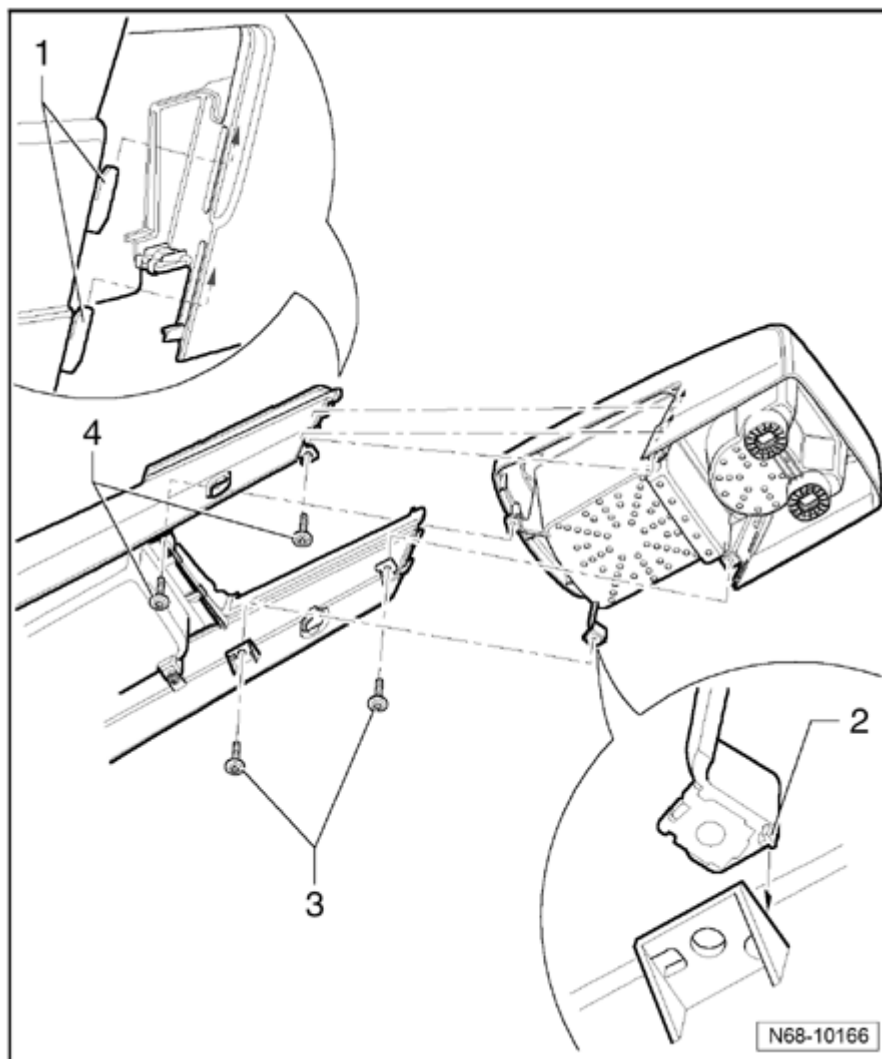
- Remove center console extension - **3** - upward out of mounts in center console.

Installing

- Insert center console extension from above into center console.

Note :

- *When connecting the parts, ensure all guide tabs - **1** - and centering tabs - **2** - are located in the corresponding openings.*



- Install center console extension with the two screws - **3** - and - **4** - (1.5 Nm).

Center console extension (with foldable armrest), removing and installing

Removing

- Remove front seats ⇒ [72-1, Front seat, removing and installing](#)
- Remove footwell trim ⇒ [68-2, Footwell trim, removing and installing](#)
- Remove front ashtray or front compartment ⇒ [68-2, Front ashtray or front storage compartment, removing and installing](#)
- Remove Infotainment trim ⇒ [68-2, Infotainment trim, removing and installing](#)
- Remove Climatronic/Climatic cover ⇒ [68-2,](#)

[Climatronic/Climatic cover, removing and installing](#)

Vehicles without Climatronic/Climatic

- Remove heater and ventilation controls

⇒ *Repair Manual, Heating Air Conditioning, Repair Group 80, Heating, Ventilation*

Vehicles with Climatic

- Remove heating and ventilation controls

⇒ *Repair Manual, Heating Air Conditioning, Repair Group 87, Air conditioning*

Vehicles with Climatronic

- Remove Climatronic operating and display unit

⇒ *Repair Manual, Heating Air Conditioning, Repair Group 87, Air conditioning*

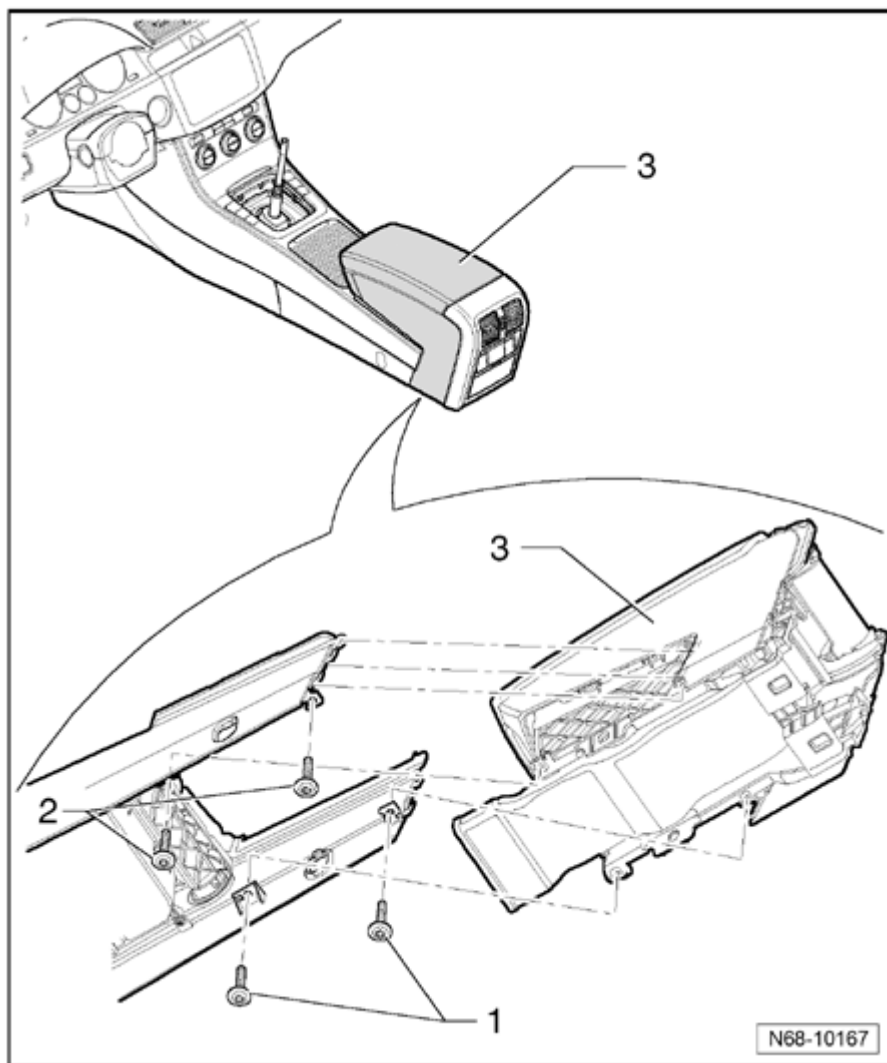
- Remove rear trim ⇒ [68-2, Rear trim, removing and installing](#)

- Remove center console (with foldable armrest) ⇒ [68-2, Center console \(with foldable armrest\), removing and installing](#)

- Remove center console air duct ⇒ [68-2, Center console air duct, removing and installing](#)

- Remove center console (with foldable armrest) storage compartment ⇒ [68-2, Center console storage compartment \(without foldable armrest\), removing and installing](#)

- Remove the two sets of bolts - 1 - and
- 2 - .



- Remove center console extension - **3** - upward out of mounts in center console.

Installing

- Insert center console extension from above into center console.

Note:

- *When connecting the parts, ensure all guide tabs - **1** - and centering tabs - **2** - are located in the corresponding openings.*

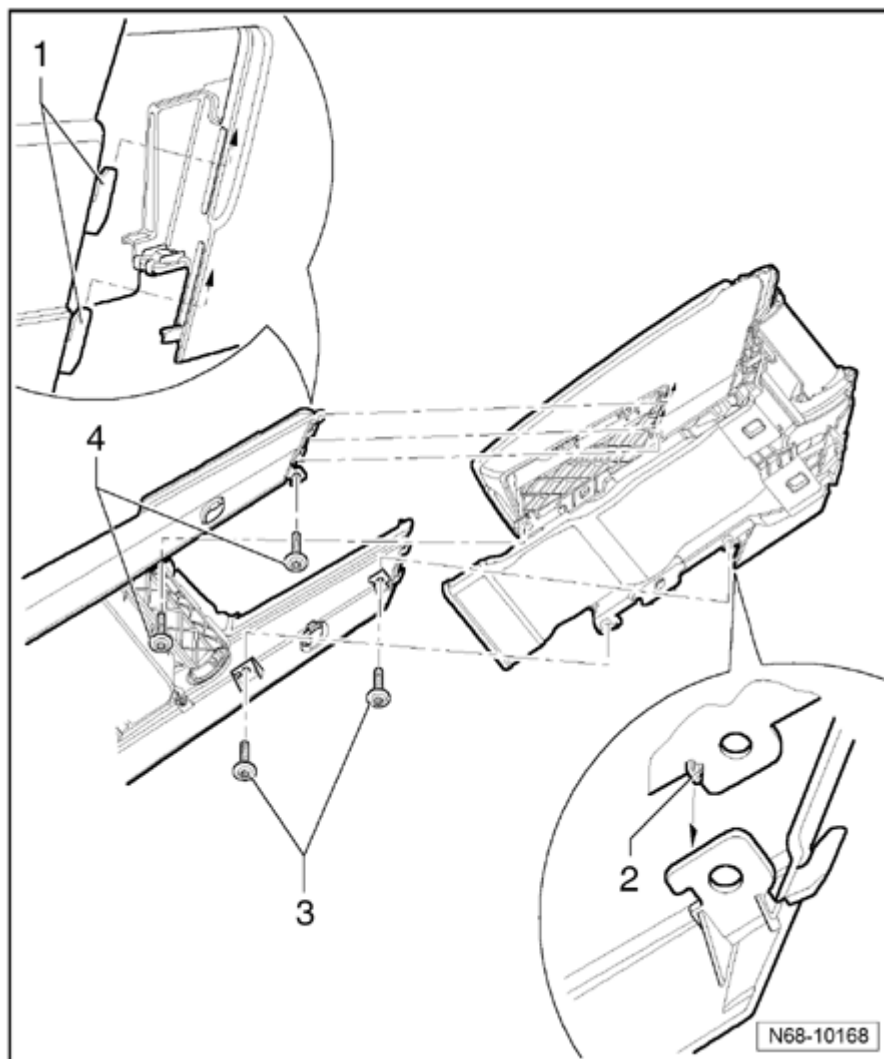
- Install center console extension with the two screws - **3** - and - **4** - (1.5 Nm).

- Insert center console extension from above into center console.

Note:

- *When connecting the parts, ensure all guide tabs - 1 - and centering tabs - 2 - are located in the corresponding openings.*

- Install center console extension with the two screws - 3 - and - 4 - (1.5 Nm).



Center console armrest, removing and installing

Removing

- Remove front seats ⇒ [72-1, Front seat, removing and installing](#)
- Remove footwell trim ⇒ [68-2, Footwell trim, removing and installing](#)
- Remove front ashtray or front compartment ⇒ [68-2, Front ashtray or front storage compartment, removing and installing](#)

- Remove Infotainment trim ⇒ [68-2, Infotainment trim, removing and installing](#)
- Remove Climatronic/Climatic cover ⇒ [68-2, Climatronic/Climatic cover, removing and installing](#)

Vehicles without Climatronic/Climatic

- Remove heater and ventilation controls

⇒ *Repair Manual, Heating Air Conditioning, Repair Group 80, Heating, Ventilation*

Vehicles with Climatic

- Remove heating and ventilation controls

⇒ *Repair Manual, Heating Air Conditioning, Repair Group 87, Air conditioning*

Vehicles with Climatronic

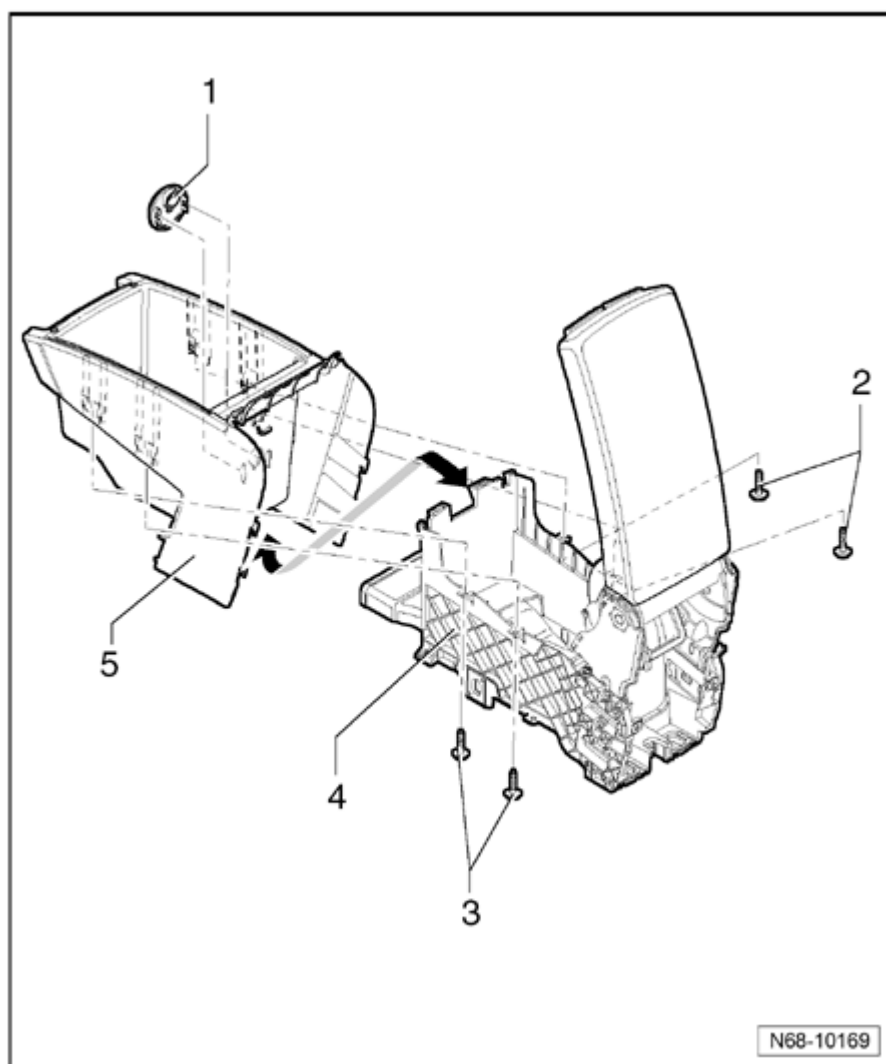
- Remove Climatronic operating and display unit

⇒ *Repair Manual, Heating Air Conditioning, Repair Group 87, Air conditioning*

- Remove rear trim ⇒ [68-2, Rear trim, removing and installing](#)
- Remove Center console (with foldable armrest) ⇒ [68-2, Center console \(with foldable armrest\), removing and installing](#)
- Remove center console air duct ⇒ [68-2, Center console air duct, removing and installing](#)
- Remove center console storage compartment (with armrest) ⇒ [68-2, Center console storage compartment \(without foldable armrest\), removing and installing](#)
- Remove center console extension (with armrest) ⇒ [68-2, Center console extension \(with foldable armrest\), removing and installing](#)
- Remove air duct lock - **1** - from storage compartment.
- Remove the two sets of bolts - **2** - and

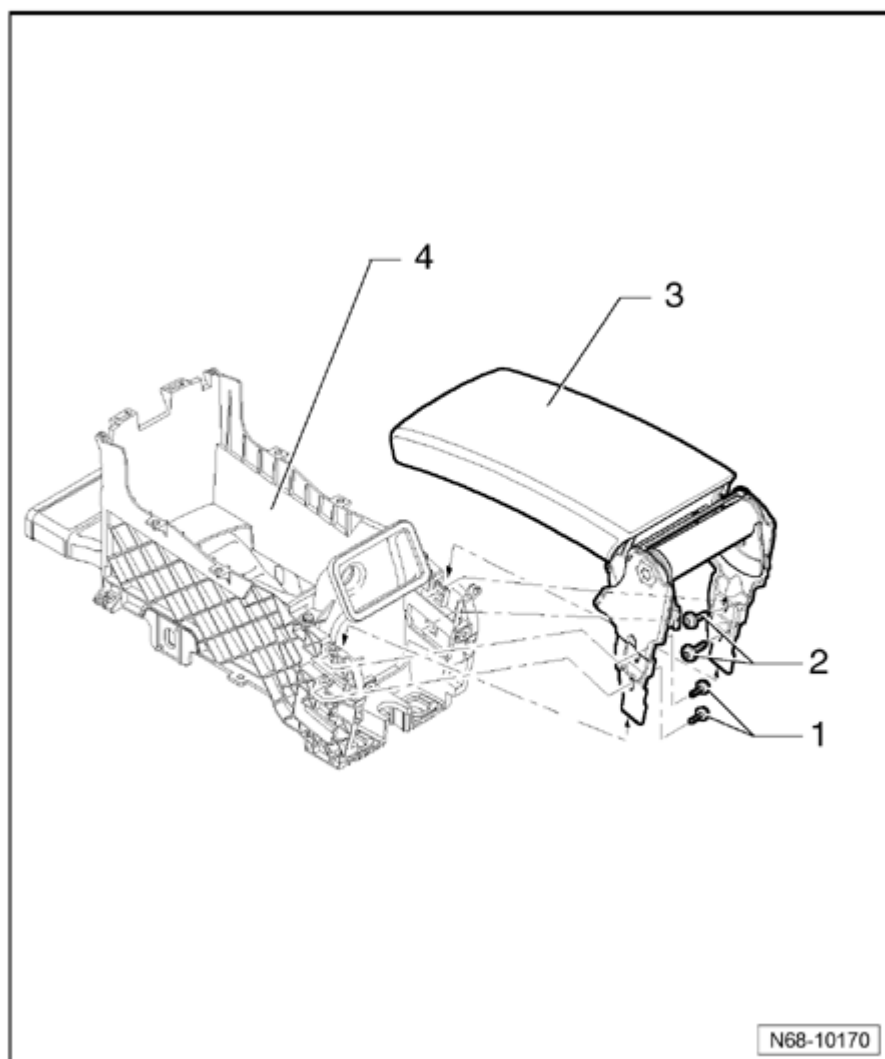
- **3** - (1.5 Nm).

- Remove wiring harness for center console extension lights.



- Pull sides of center console extension - **5** - outward slightly and loosen armrest frame - **4** - from extension - **arrow** - .

- Remove two bolts - **1** - and - **2** - (1.5 Nm) respectively.



- Remove armrest - **3** - from frame - **4** -

.

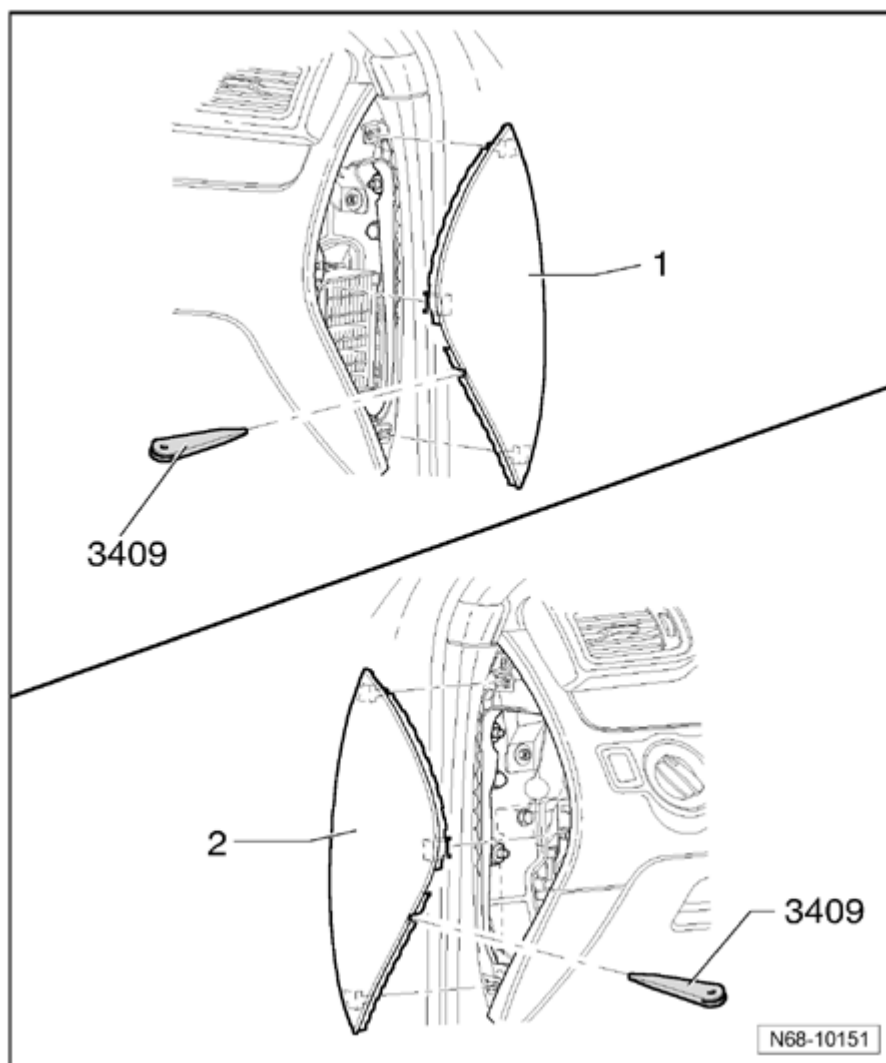
Installing

- Installation is performed in the reverse order of removal.

Instrument panel side covers, removing and installing

Removing

- Using trim removal wedge 3409 , pry right side instrument panel cover - **1** - out of locking mechanisms.



- Using trim removal wedge 3409 , pry left side instrument panel cover - 2 - out of locking mechanisms.

Installing

- Installation is performed in the reverse order of removal.

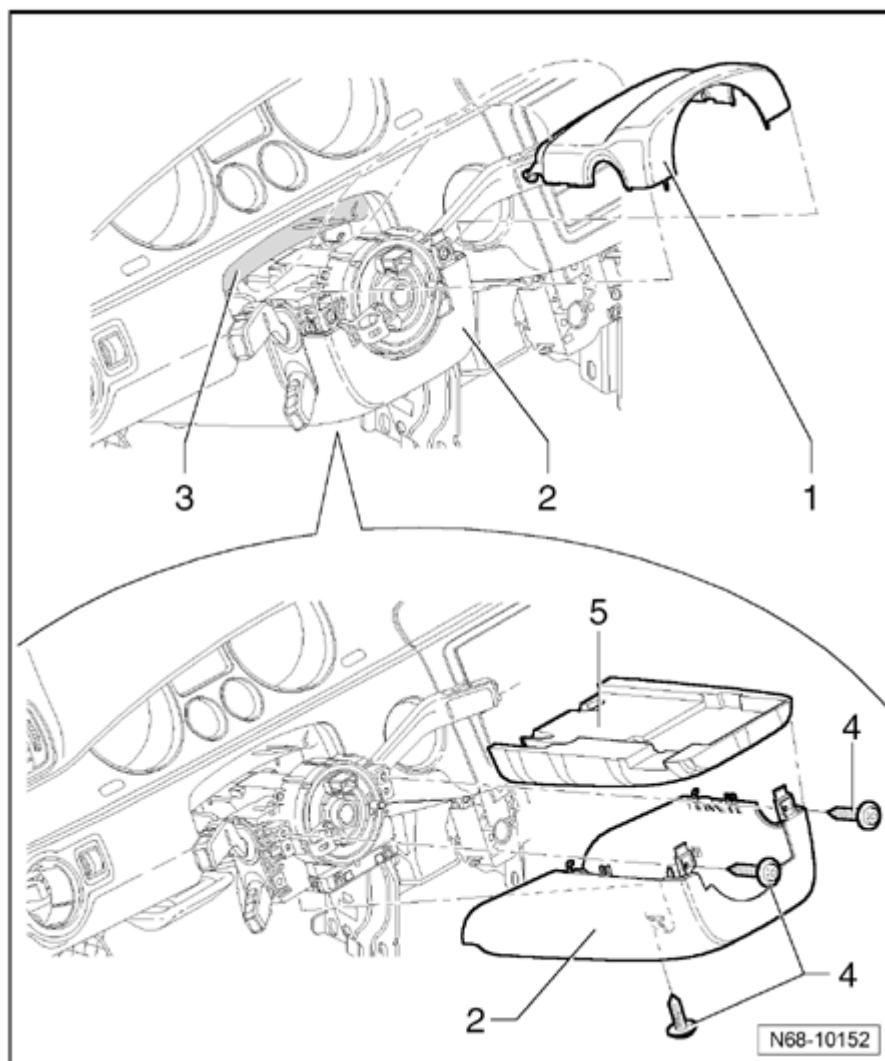
Steering column trim, removing and installing

Removing

- Remove driver-side airbag unit ⇒ [69-4, Driver airbag unit, removing and installing](#)
- Remove steering wheel

⇒ *Repair Manual, Suspension, Wheels, Brakes, Steering , Repair Group 48, Steering*

- Loosen upper steering column trim - **1**
- from mounts in lower steering column trim - **2** - .
- Loosen upper steering column trim from gap cover - **3** - .
- Remove the three bolts - **4** - (1.5 Nm).



- Loosen lower steering column trim - **2** - from mounts and remove foam insert, if necessary.

Installing

- Installation is performed in the reverse order of removal.

Glove compartment, removing and installing

Removing

- Switch off ignition.

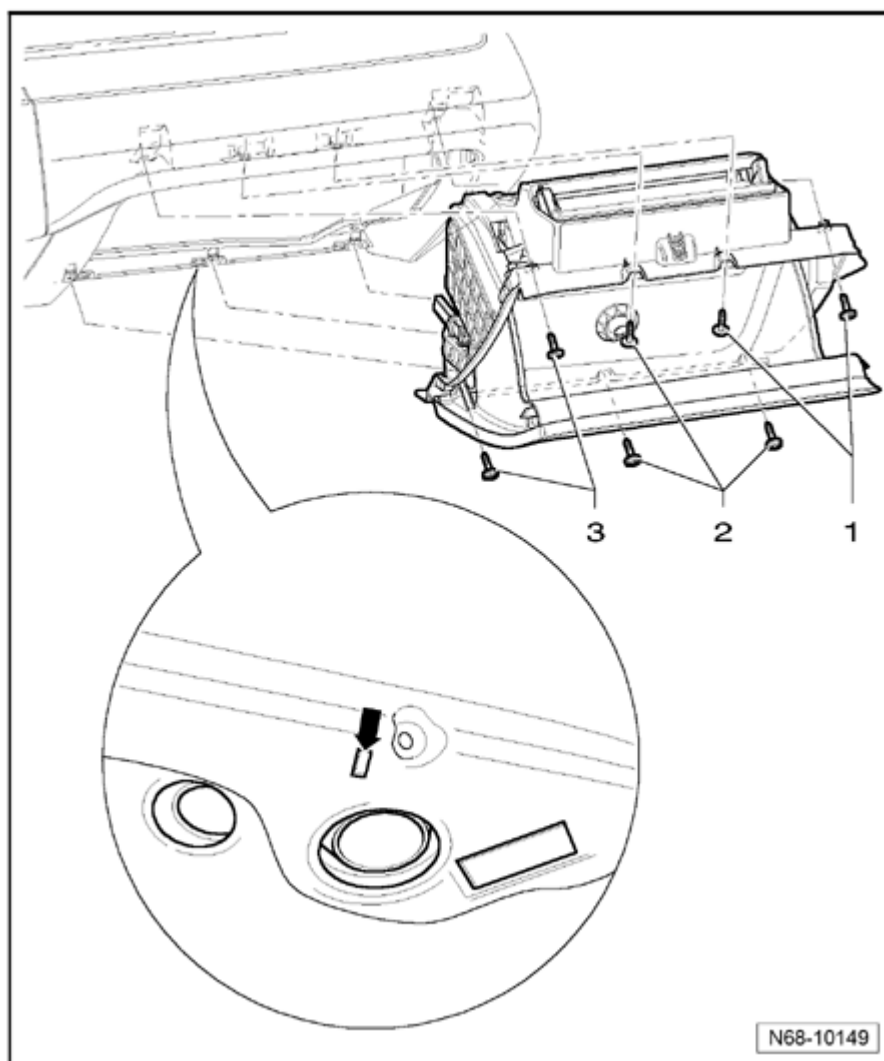
Vehicles with CD changer.

- Remove CD changer

⇒ [Repair Manual, Communication, Repair Group 91, Communication](#)

All vehicles

- Remove 7 bolts - **1** - , - **2** - , and - **3** - (1.5 Nm).
- Insert a small screwdriver in the opening - **arrow** - at lower end of glove compartment and release catch.
- Loosen glove compartment from instrument panel.
- In vehicles with glove compartment cooling, disconnect A/C channel from glove compartment.
- Disconnect wiring harness from lights and contact switch.



- In vehicles with footwell lights, disconnect wiring harness from lights.

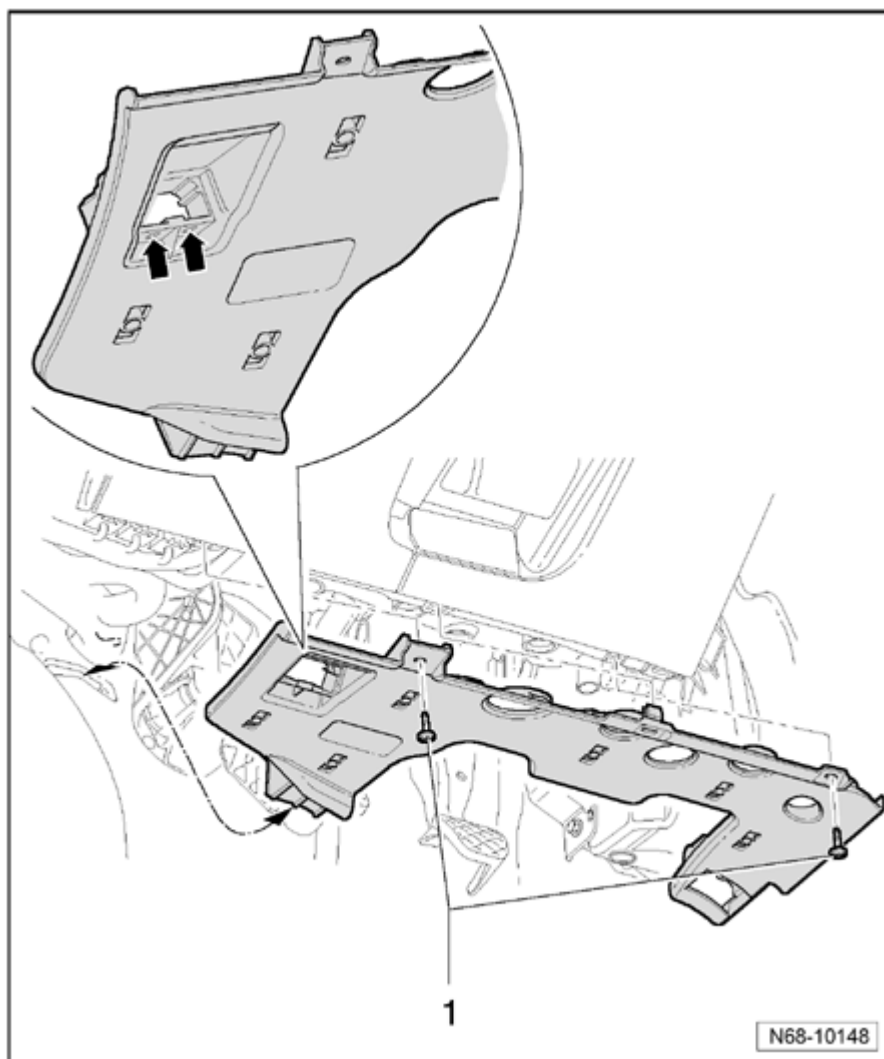
Installing

- Installation is performed in the reverse order of removal.

Drivers side footwell cover, removing and installing

Removing

- Switch off ignition.
- Remove the two bolts - **1** - (1.5 Nm).
- Remove cover from mounts and disconnect wiring harness (if installed) from footwell lights.



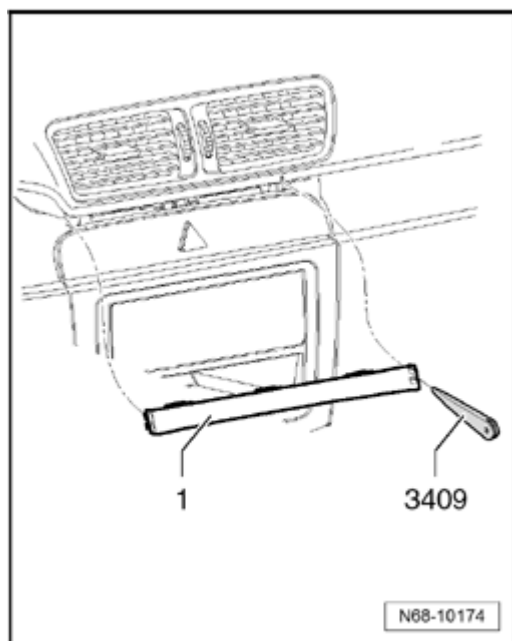
- Press the two locking mechanisms - **arrows** - and disconnect diagnostic connector from cover.

Installing

- Installation is performed in the reverse order of removal.

Center instrument panel trim, removing and installing

Removing



- Pry trim - **1** - out of mountings using Trim Removal Wedge 3409 .

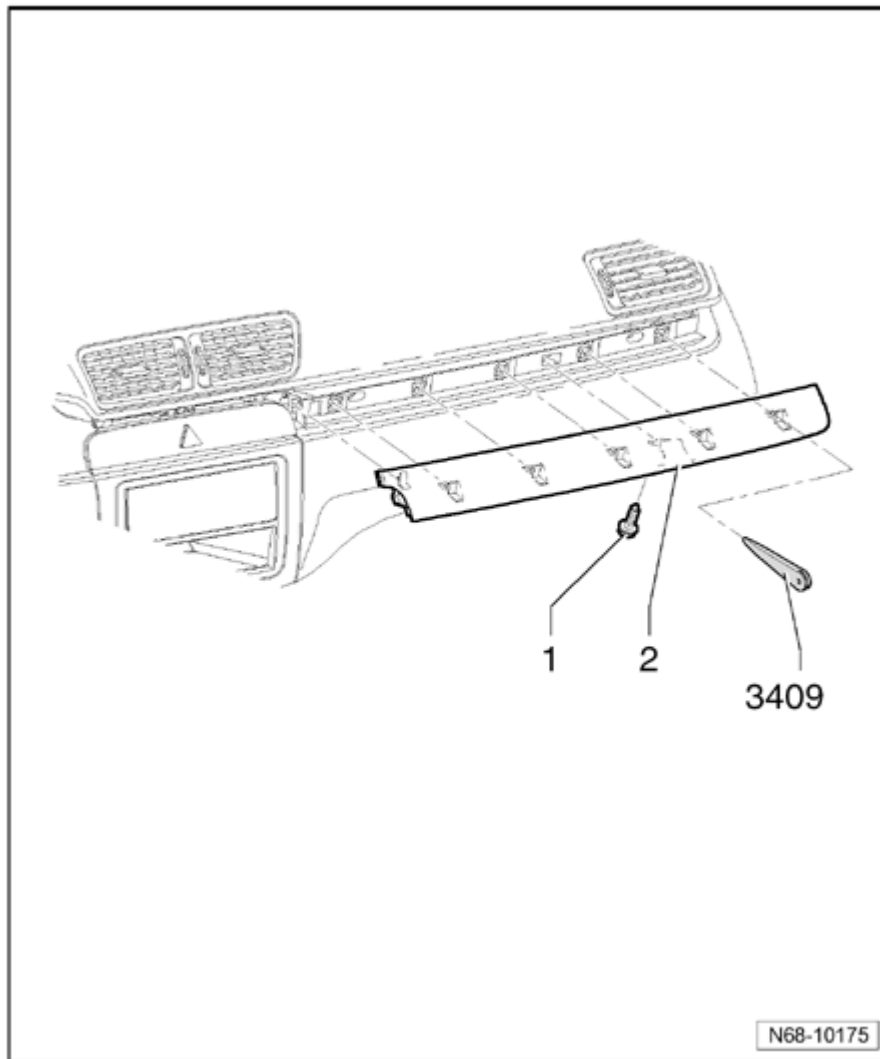
Installing

- Installation is performed in the reverse order of removal.

Passenger-side instrument panel trim, removing and installing

Removing

- Switch off ignition.
- Remove glove compartment ⇒ [68-2, Glove compartment, removing and installing](#)
- Remove instrument panel center trim ⇒ [68-2, Center instrument panel trim, removing and installing](#)
- Remove bolt - **1** - (1.5 Nm).



- Pry trim - **2** - out of mounts in area around catches using Trim Removal Wedge 3409 .

Installing

- Installation is performed in the reverse order of removal.

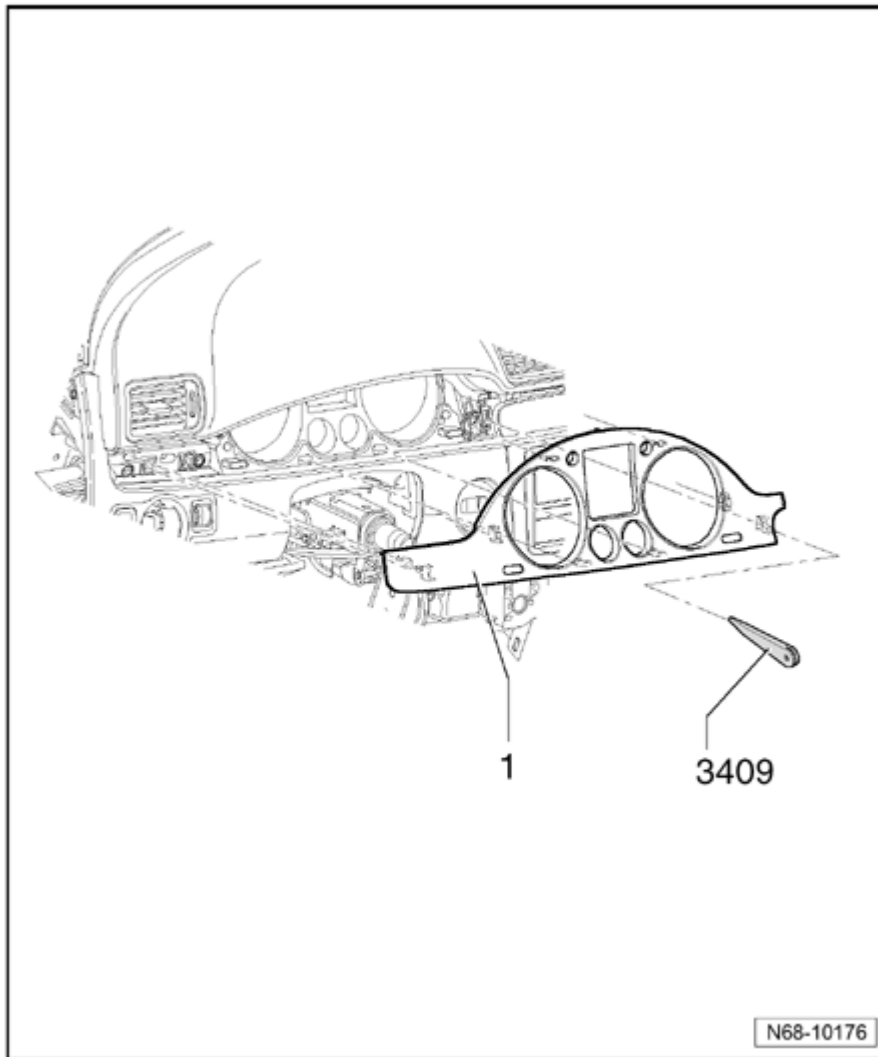
Instrument panel trim, removing and installing

Removing

- Remove instrument panel center trim ⇒ [68-2, Center instrument panel trim, removing and installing](#)

Note :

- *To provide a better illustration, the steering wheel and steering column trim are not shown in the illustration.*



- Pry trim - **1** - out of mounts in area around catches using Trim Removal Wedge 3409 .

Installing

- Installation is performed in the reverse order of removal.

Center compartment, removing and installing

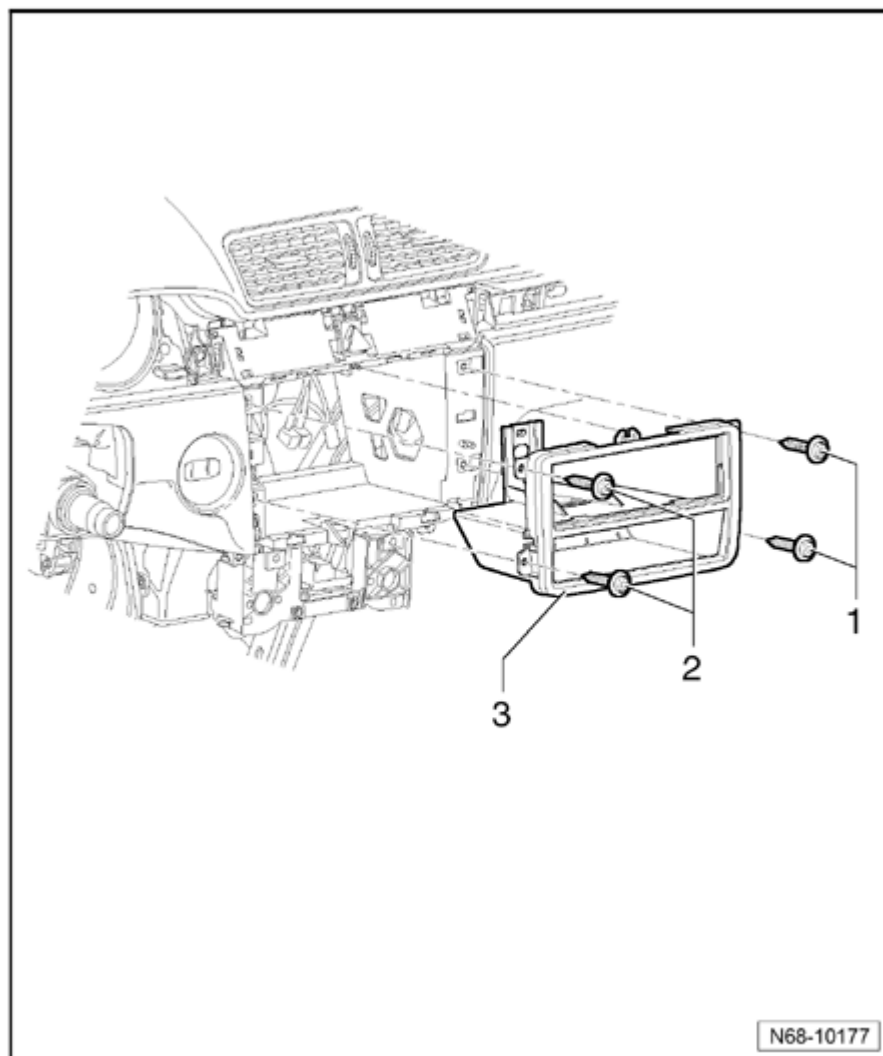
Removing

- Remove Infotainment trim ⇒ [68-2, Infotainment trim, removing and installing](#)

Note :

- *To provide a better overview, the adjacent components are only partially shown in the illustration.*

- Remove two screws - **1** - and - **2** - (1.5 Nm).



- Remove compartment - **3** - from instrument panel.

Installing

- Installation is performed in the reverse order of removal.

Center storage compartment unit, removing and installing

Removing

- Switch off ignition.
- Remove glove compartment ⇒ [68-2, Glove compartment, removing and installing](#)
- Remove instrument panel center trim ⇒ [68-2, Center](#)

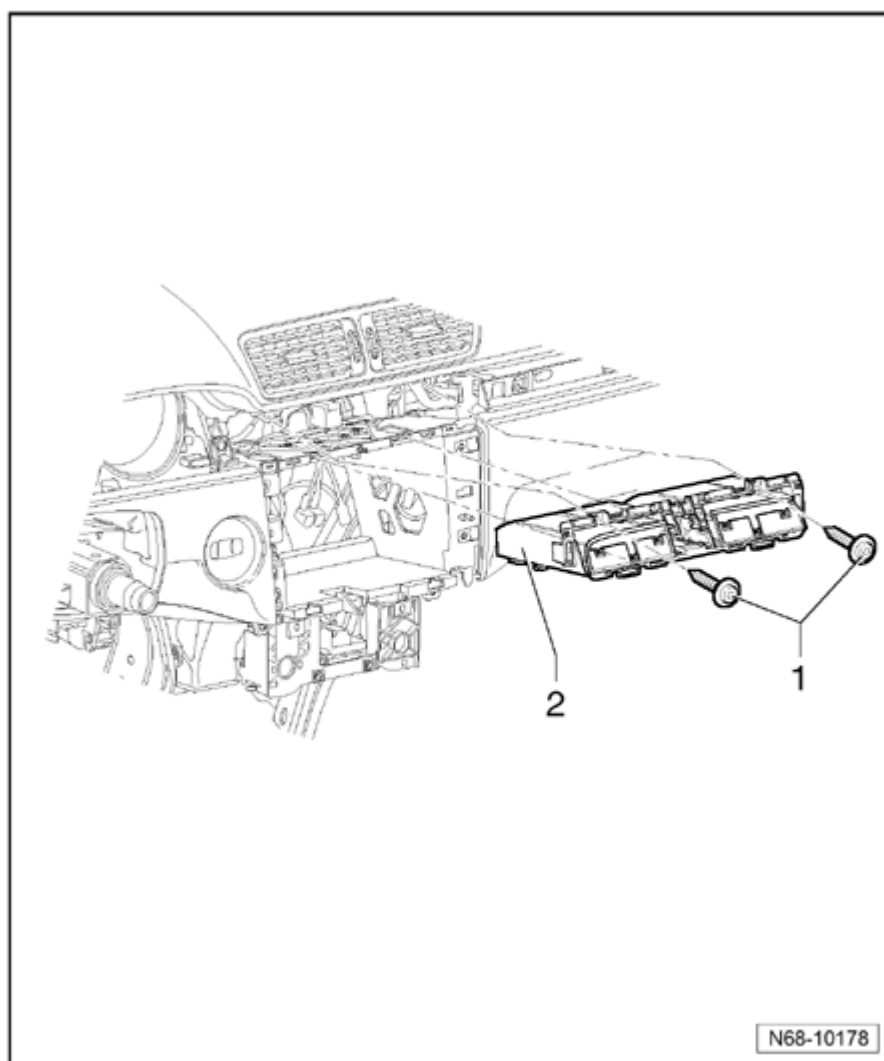
instrument panel trim, removing and installing

- Remove instrument cluster trim ⇒ [68-2, Instrument panel trim, removing and installing](#)
- Remove passenger-side instrument panel trim ⇒ [68-2, Passenger-side instrument panel trim, removing and installing](#)

Note :

- *To provide a better overview, the adjacent components are only partially shown in the illustration.*

- Remove the two bolts - **1** - (1.5 Nm).
- Remove center storage compartment unit - **2** - from instrument panel.



- Disconnect wiring harness from warning light switch.

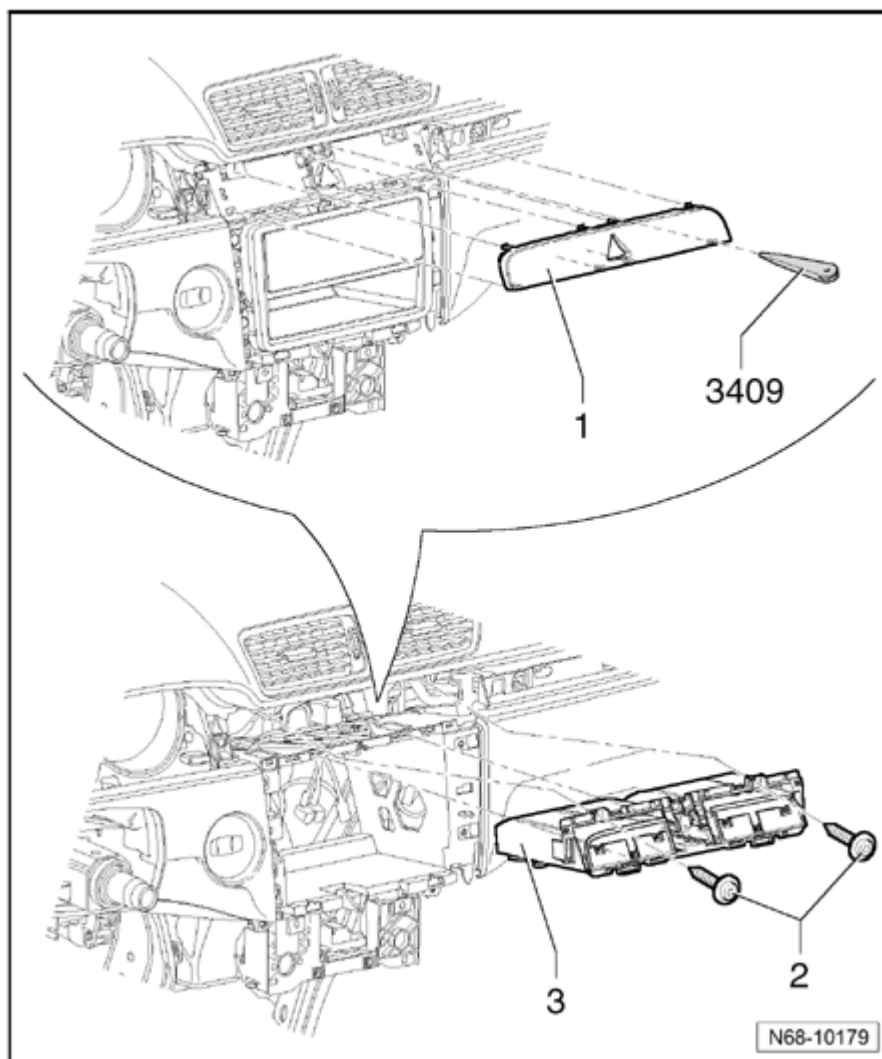
Installing

- Installation is performed in the reverse order of removal.

Cover plate carrier, removing and installing**Removing**

- Switch off ignition.
- Remove glove compartment ⇒ [68-2, Glove compartment, removing and installing](#)
- Remove instrument panel center trim ⇒ [68-2, Center instrument panel trim, removing and installing](#)
- Remove instrument cluster trim ⇒ [68-2, Instrument panel trim, removing and installing](#)
- Remove passenger-side instrument panel trim ⇒ [68-2, Passenger-side instrument panel trim, removing and installing](#)
- Pry trim - **1** - out of mounts in area around catches using Trim Removal Wedge 3409 .
- Remove the two bolts - **2** - (1.5 Nm).
- Remove cover plate carrier - **3** - from instrument panel.

Volkswagen Technical Site: <http://volkswagen.msk.ru> <http://vwts.info> <http://vwts.ru>
огромный архив документации по автомобилям Volkswagen, Skoda, Seat, Audi



- Disconnect wiring harness from warning light switch.

Installing

- Installation is performed in the reverse order of removal.

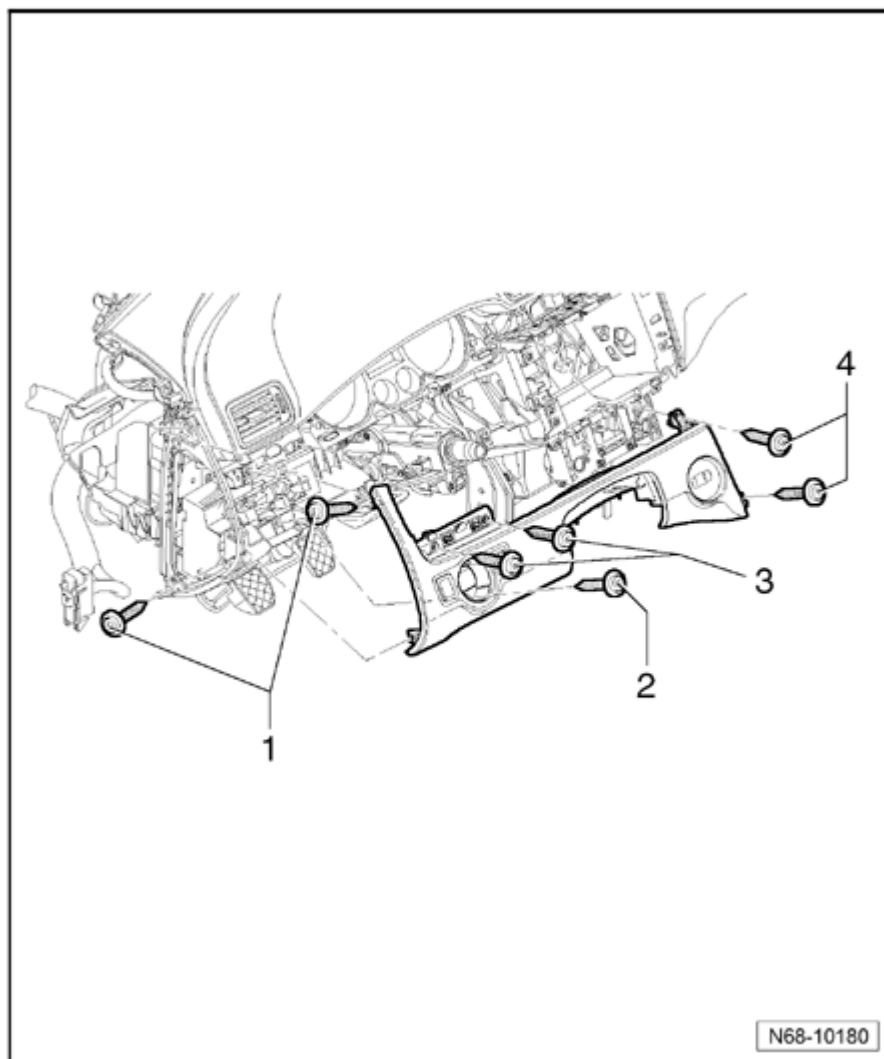
Drivers side trim, removing and installing

Removing

- Remove left side instrument panel cover ⇒ [68-2, Instrument panel side covers, removing and installing](#)
- Remove driver-side airbag unit ⇒ [69-4, Driver airbag unit, removing and installing](#)
- Remove steering wheel

⇒ *Repair Manual, Suspension, Wheels, Brakes, Steering , Repair Group 48, Steering*

- Remove steering column trim ⇒ [68-2, Steering column trim, removing and installing](#)
- Remove Infotainment trim ⇒ [68-2, Infotainment trim, removing and installing](#)
- Remove instrument panel center trim ⇒ [68-2, Center instrument panel trim, removing and installing](#)
- Remove instrument cluster trim ⇒ [68-2, Instrument panel trim, removing and installing](#)
- Remove two side screws - **1** - (1.5 Nm).
- Press rotary light switch in as far as stop, rotate it toward right until it stands vertically, pull it out and disconnect wiring harness.
- Remove bolt - **2** - (1.5 Nm).
- Remove the two bolts - **3** - (1.5 Nm).
- Remove the two bolts - **4** - (1.5 Nm).
- Loosen trim from instrument panel.
- Disconnect wiring harnesses from automatic headlamp range control and parking brake switch.



- Disconnect wiring harness from ignition lock.

Installing

- Installation is performed in the reverse order of removal.

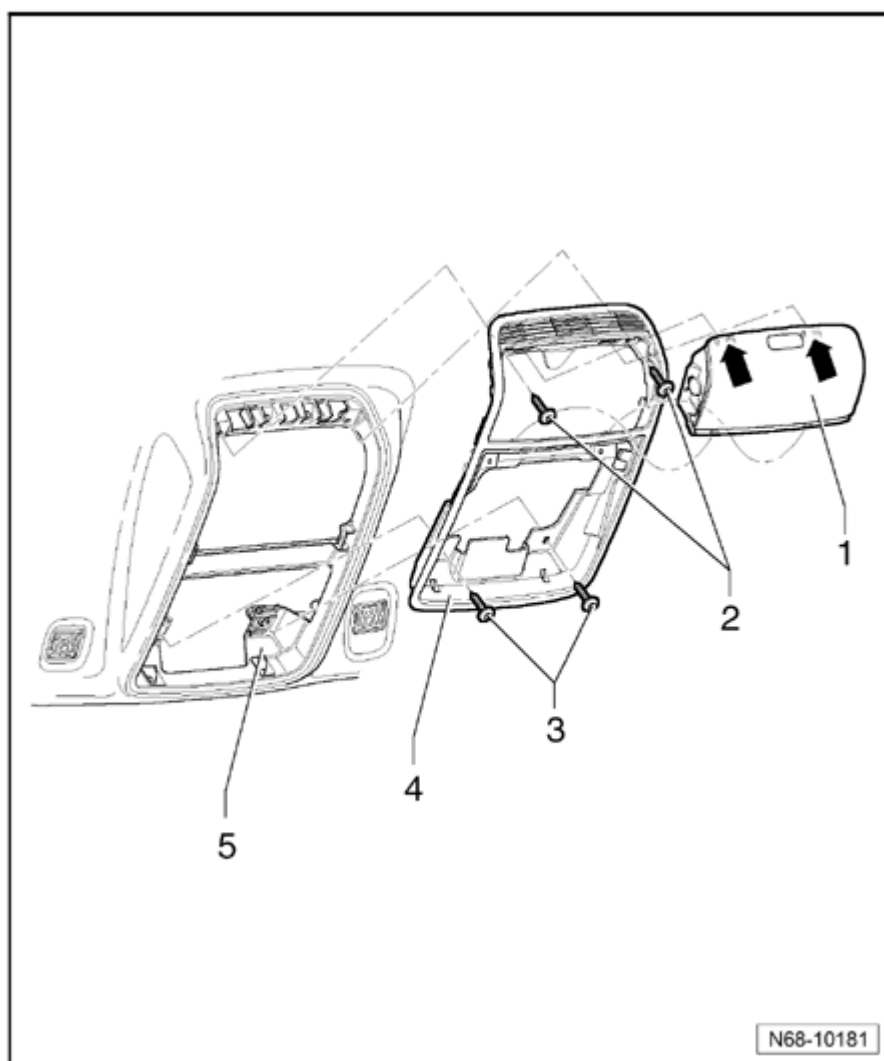
Storage compartment with console in headliner, removing and installing

Removing

- Switch off ignition.
- Remove front interior and reading lights

⇒ *Repair Manual, Electrical Equipment, Repair Group 96, Lights, Switches - Interior, Anti-theft*

- Operate the two catches - **arrows** - and remove storage compartment - **1** - from console.
- Remove the two rear screws - **2** - (2 Nm).
- Remove the two front screws - **3** - (2 Nm).



- Remove console - **4** - from reinforcing frame in headliner - **5** - .

Installing

- Installation is performed in the reverse order of removal.

Sun visor (standard), removing and installing

Note:

- Removal and installation is described for the right-

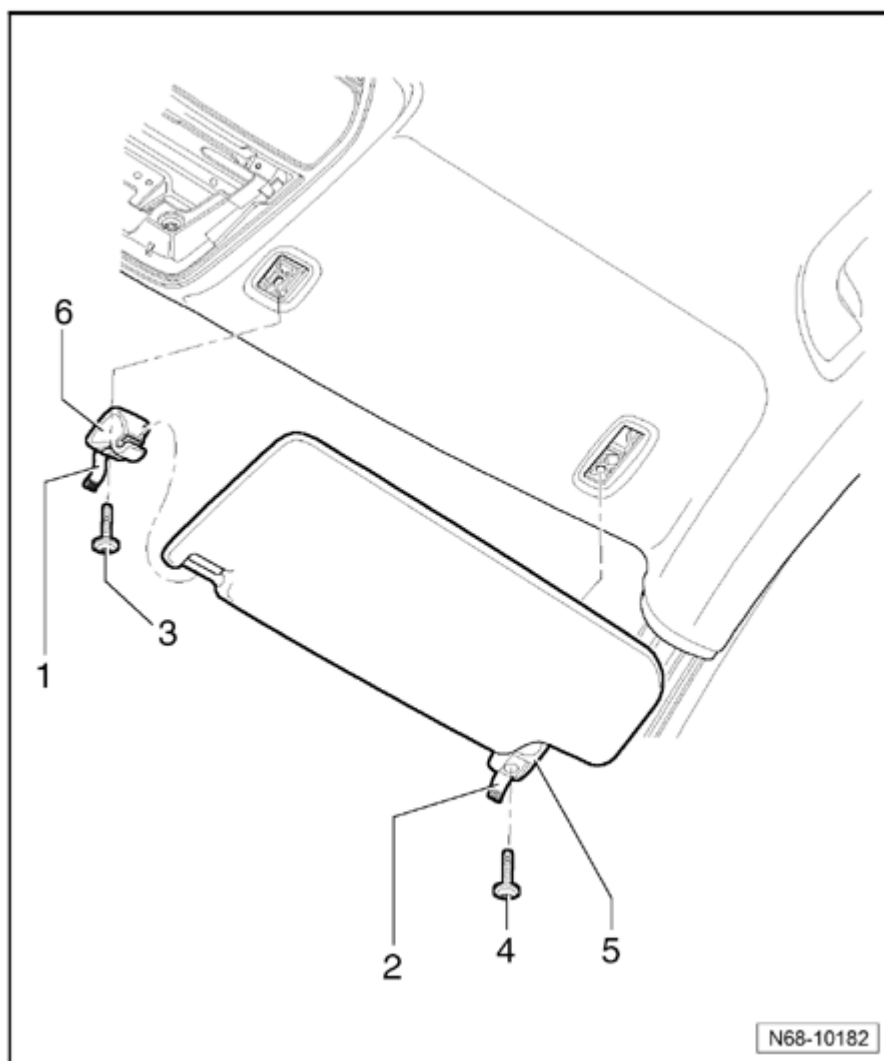
hand side of the vehicle. Removal and installation for the left-hand side is performed in the same manner.

Removing

- Switch off ignition.
- Using a small screwdriver, open cover caps - **1** - and - **2** - .
- Remove bolts - **3** - and - **4** - (2 Nm).
- Carefully pull sun visor mount - **5** - out of mount.
- Lightly pull on wiring harness (flat wire) until harness connector slips out of retaining clip in molded headliner.
- Carefully pull connector out through opening in molded headliner, pulling out just far enough until connector is located closely beneath molded headliner.

Note :

- *Do not pull harness connector further, since the excess length of wiring harness (flat wire) is limited and there is a hazard it will shear off.*
- Disconnect connector.



- Pull sun visor mount - **6** - out of mount.

Installing

Note:

- *Slide a small foam pipe (part number 535.971.790) over harness connector when installing sun visor.*

- Installation is performed in the reverse order of removal.

Sun visor (double), removing and installing

Note:

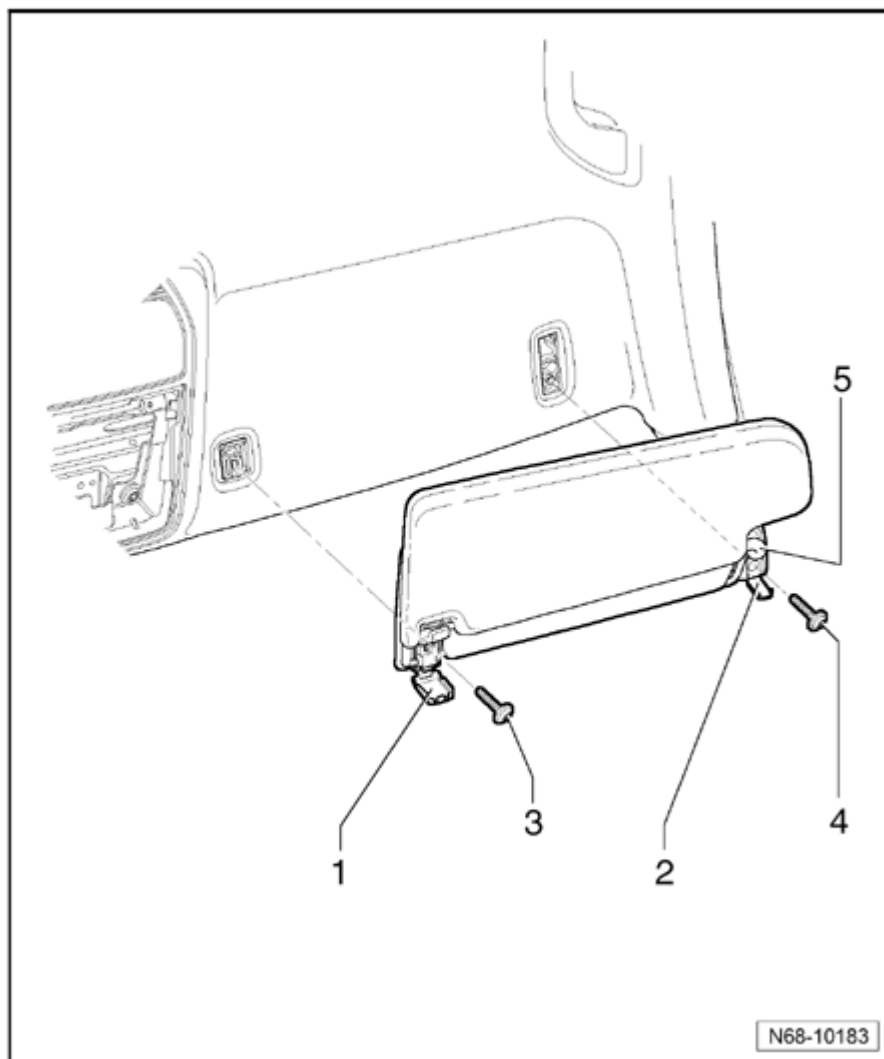
- *Removal and installation is described for the right-hand side of the vehicle. Removal and installation for the left-hand side is performed in the same manner.*

Removing

- Switch off ignition.
- Using a small screwdriver, open cover caps - **1** - and - **2** - .
- Remove bolts - **3** - and - **4** - (2 Nm).
- Carefully pull sun visor mount - **5** - out of mount.
- Lightly pull on wiring harness (flat wire) until harness connector slips out of retaining clip in molded headliner.
- Carefully pull connector out through opening in molded headliner, pulling out just far enough until connector is located closely beneath molded headliner.

Note :

- *Do not pull harness connector further, since the excess length of wiring harness (flat wire) is limited and there is a hazard it will shear off.*



- Disconnect connector.

Installing

Note:

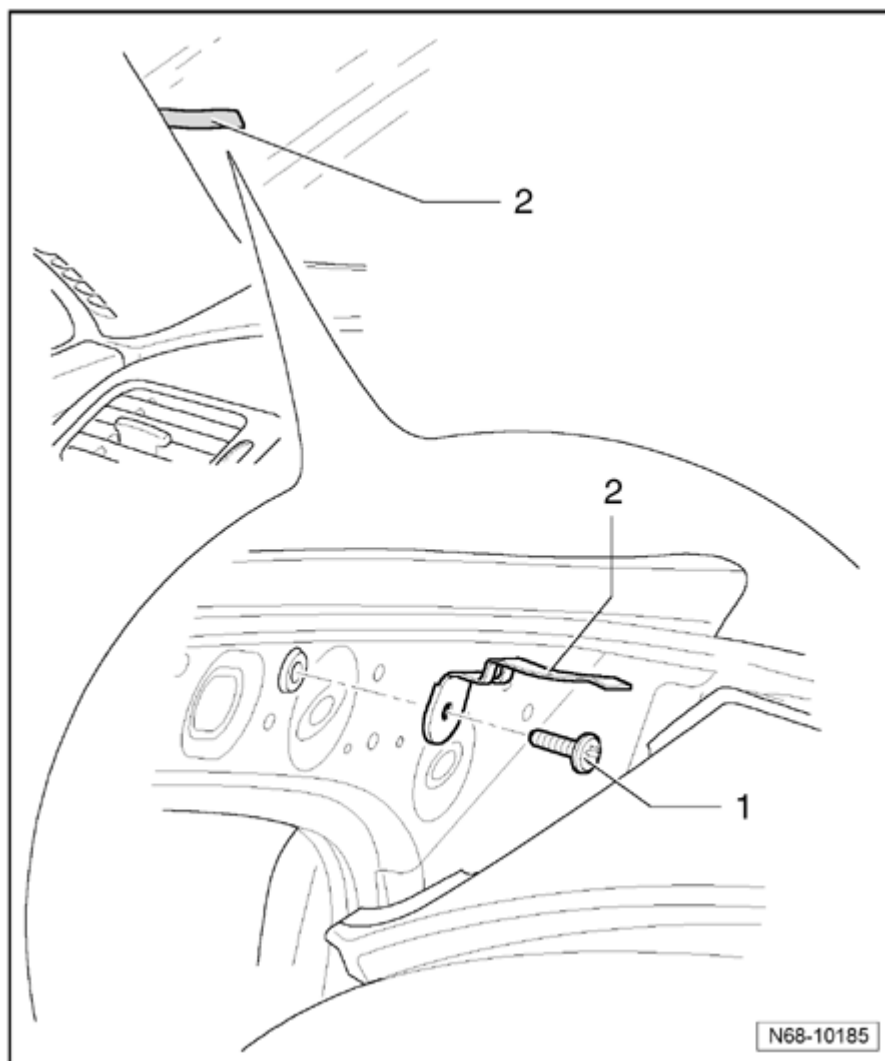
- *Slide a small foam pipe (part number 535.971.790) over harness connector when installing sun visor.*

- Installation is performed in the reverse order of removal.

Parking voucher holder

Removing

- Remove upper driver-side A-pillar trim ⇒ [70-3, Upper A-pillar trim, removing and installing](#)
- Remove bolt - **1** - (2 Nm).



- Remove parking voucher holder - **2** -
from body.

Installing

- Installation is performed in the reverse order of removal.



Sill panel strips

Sill panel trim, removing and installing

Note:

- *Removal and installation is described for the left-hand side of the vehicle. Removal and installation for the right-hand side is performed in the same manner.*

Removing

Sedan

- Remove seat bench ⇒ [72-2, Seat bench \(sedan\), removing and installing](#) .

Wagon

- Fold seat bench forward.

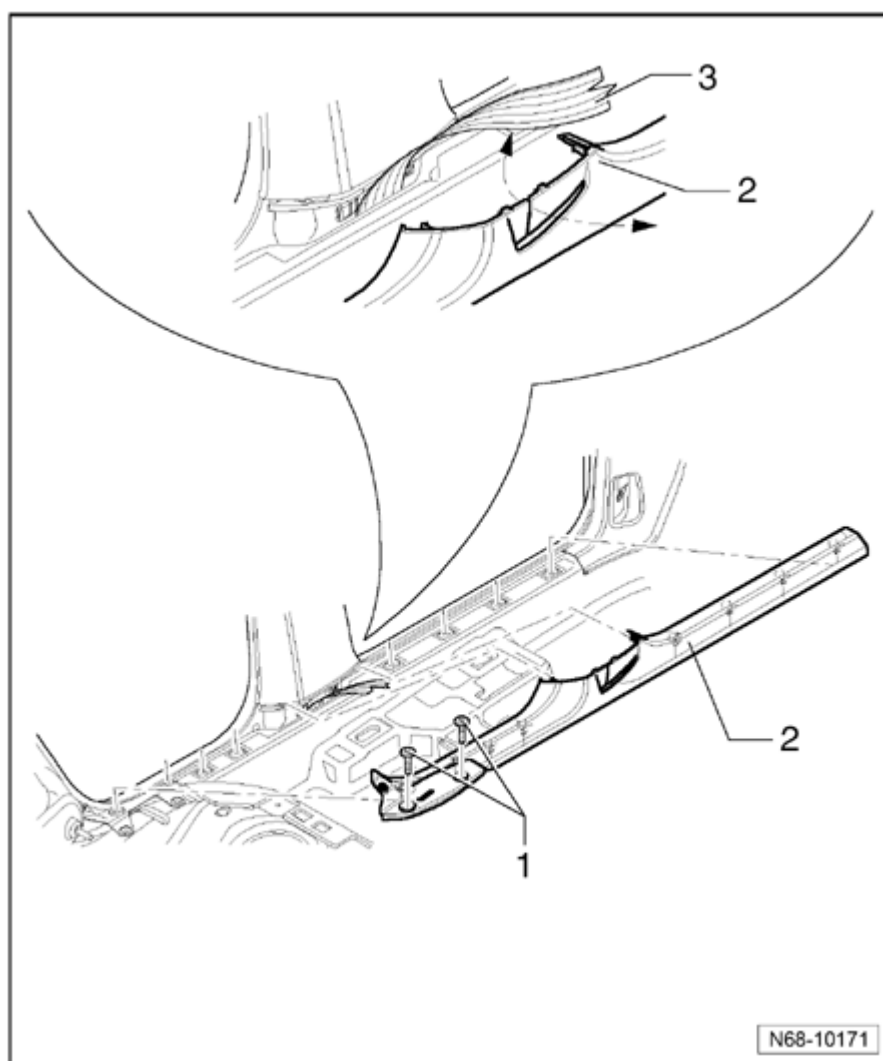
All vehicles

- Remove side upholstery:
 - with rear side airbags ⇒ [72-2, Side upholstery with side airbag, removing and installing](#)
 - without rear side airbags ⇒ [72-2, Side upholstery without side airbag, removing and installing](#)
- Remove wheel housing trim ⇒ [68-3, Wheel housing trim, removing and installing](#) .

Note :

- *To provide a better illustration, the front seat is not shown in the illustration.*
- Remove the two bolts - **1** - .
- Remove sill molding - **2** - from catches in sill in front door area.
- Loosen sill panel trim from mounts in front area of B-pillar.
- Remove sill panel trim from catches in

door sill in rear door area.



- Thread seat belt - **3** - through slit in sill panel trim - **2** - .

Installing

- Thread seat belt - **3** - through slit in sill panel trim - **2** - .

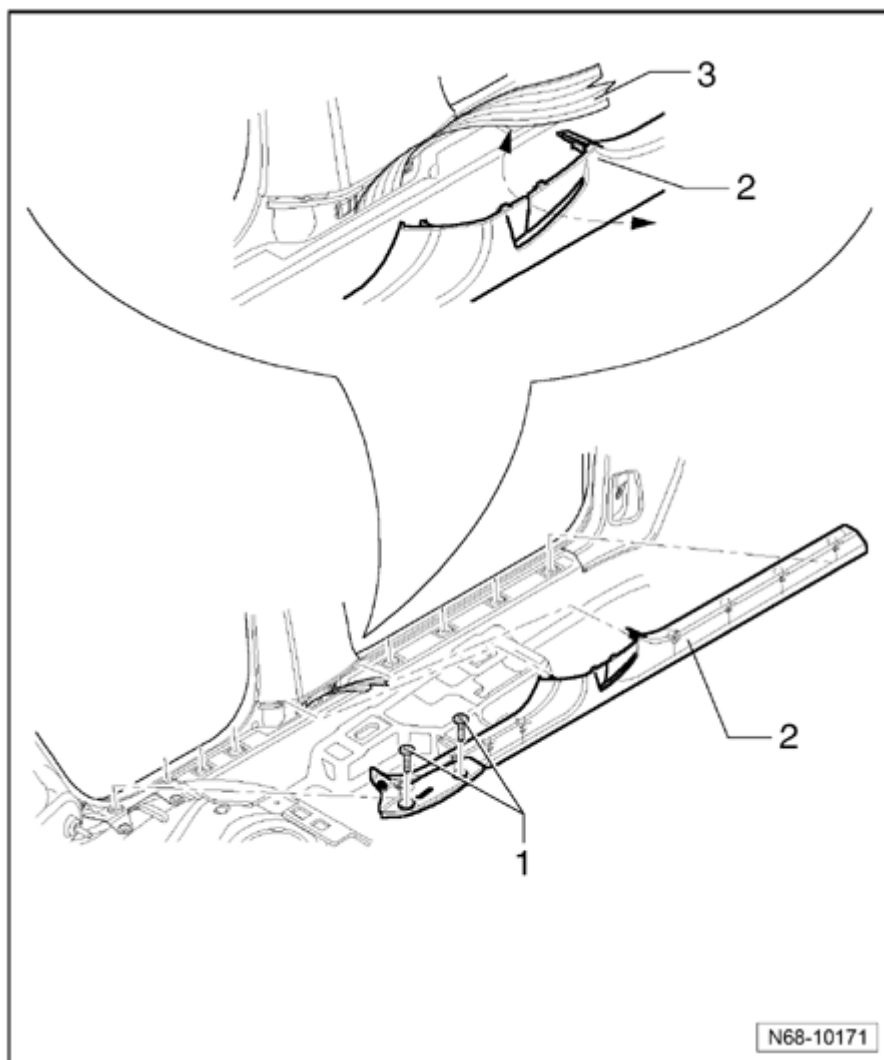
- Bend sill panel trim outward in rear area of B-pillar.

- Press sill panel trim into mounts in door sill in rear door area.

- Place sill panel trim in corresponding mounts in front area of B-pillar.

- Press sill panel trim into mounts in door sill in front door area.

- Secure sill panel trim with two screws -
1 - (2 Nm).



- Check whether sill panel trim is located
in door seal moldings.

Wheel housing trim, removing and installing

Note:

- *Removal and installation is described for the left-hand side of the vehicle. Removal and installation for the right-hand side is performed in the same manner.*

Removing

Sedan

- Remove seat bench ⇒ [72-2, Seat bench \(sedan\), removing and installing](#) .

Wagon

- Fold seat bench forward.

All vehicles

- Remove side upholstery:
 - with rear side airbags ⇒ [72-2, Side upholstery with side airbag, removing and installing](#)
 - without rear side airbags ⇒ [72-2, Side upholstery without side airbag, removing and installing](#)

Note :

- *To provide a better illustration, the rear backrest is not shown in the illustration.*

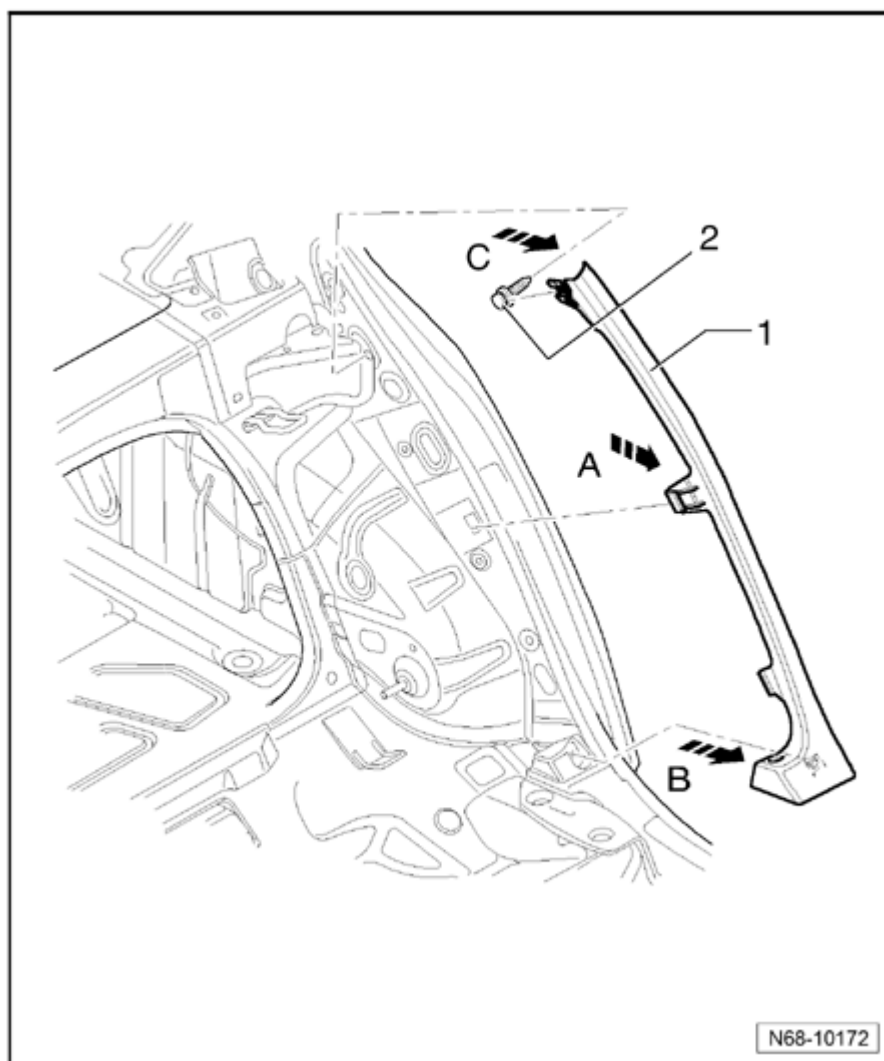
- Remove trim - **1** - in center area from mount in body and door seal molding - **arrow A** - .

- Remove trim in lower area from mount in body - **arrow B** - .

- Remove trim in upper area from clip - **2**
- in body - **arrow C** - .

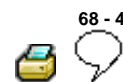
Note :

- *To provide a better overview, the clip - **2** - is shown removed in the illustration.*



Installing

- Installation is performed in the reverse order of removal.
- Check whether sill panel strip is located in the door seal molding.



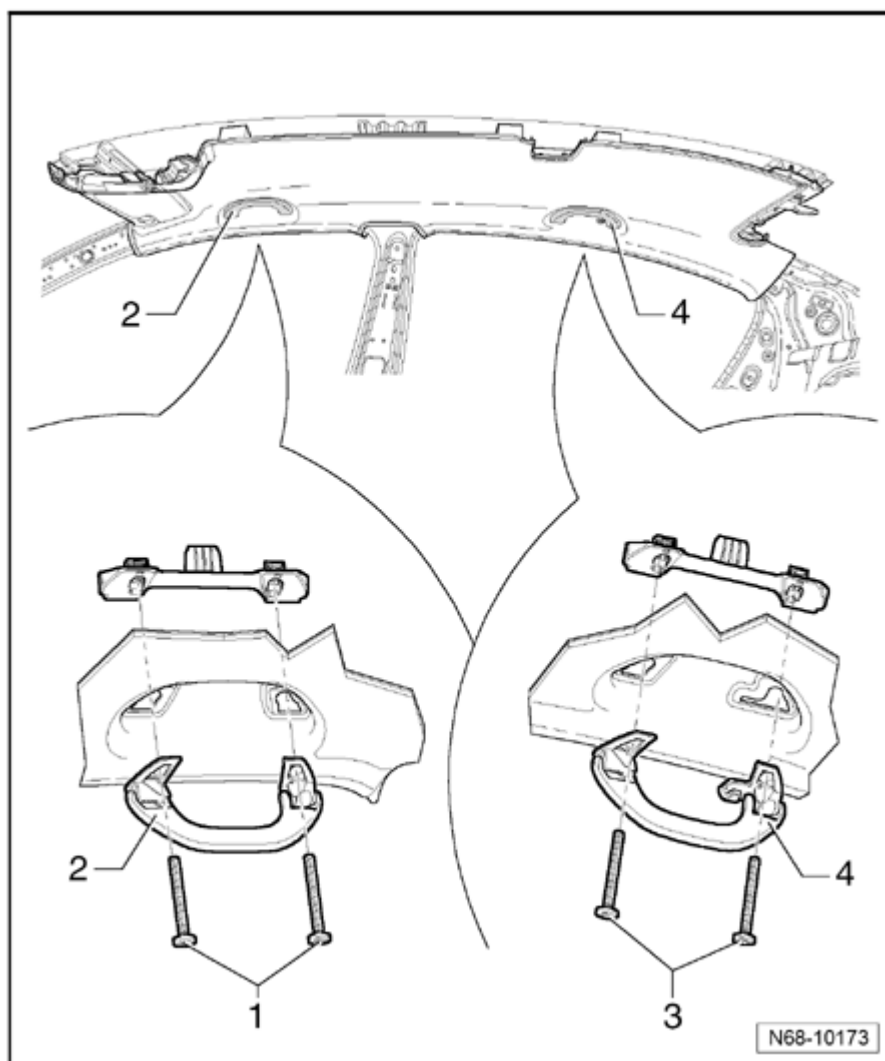
Grab handles

Roof grab handles, removing and installing

Note:

- *Removal and installation is described for the right-hand side of the vehicle. Removal and installation for the left-hand side is performed in the same manner.*

- Swivel front right grab handle away - **2**
- and open both small cover caps with a small screwdriver.
- Remove two screws - **1** - (2 Nm) and loosen grab handle from adapter plate in roof.
- Swivel rear right grab handle away - **4** -
and open both small cover caps with a small screwdriver.



- Remove two screws - **3** - (2 Nm) and loosen grab handle from adapter plate in roof.

Installing

- Installation is performed in the reverse order of removal.



Sun shade

Sun shade, removing and installing

Removing

Note:

- *Removal of sun shade is performed when it is in a rolled in state.*

- Remove trim on C-pillars, sedan:

- Vehicles without sun shade ⇒ [70-3, C-pillar trim, \(sedan\) \(vehicles without sun shade\), removing and installing](#)
- Vehicles with sun shade ⇒ [70-3, C-pillar trim \(sedan\) \(vehicles with sun shade\), removing and installing](#)

- Remove seat bench ⇒ [72-2, Seat bench \(sedan\), removing and installing](#) .

- Remove side upholstery:

- with rear side airbags ⇒ [72-2, Side upholstery with side airbag, removing and installing](#)
- without rear side airbags ⇒ [72-2, Side upholstery without side airbag, removing and installing](#)

- Remove rear shelf (vehicles with sun shade) ⇒ [70-3, Rear shelf \(vehicles with sun shade\), removing and installing](#)

Note :

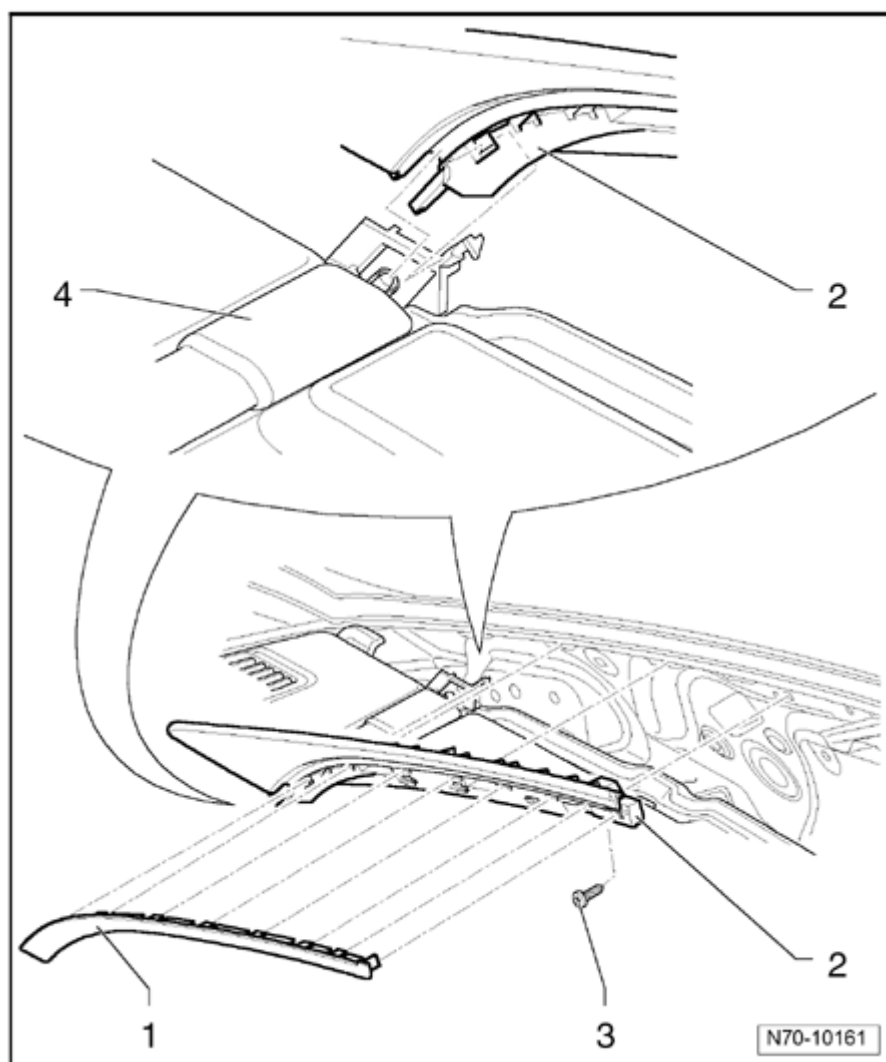
- *Removal is described for the left side of the vehicle, removal on the right side is the same.*

- Remove trim - **1** - from mounts in sun shade guide - **2** - .

- Remove bolt - **3** - (1.5 Nm).

- Remove sun shade guide - **2** - from

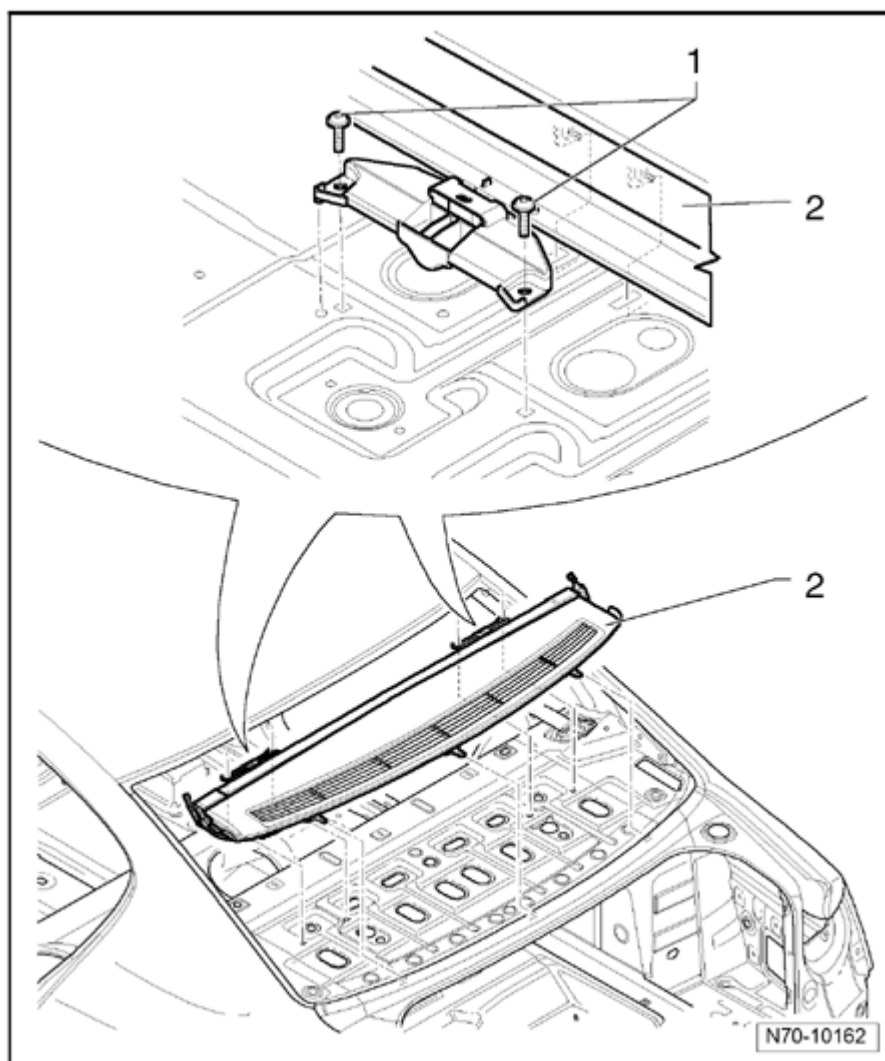
mounts in body.



- Loosen sun shade guide - **2** - from mounts in sun shade - **4** - .

- Remove two screws - **1** - (1.5 Nm) on each holder.

- Remove sun shade - **2** - upward out of mounts.



- On vehicles with electric sun shade, disconnect wiring harness.

Installing

- Installation is performed in the reverse order of removal.

Note:

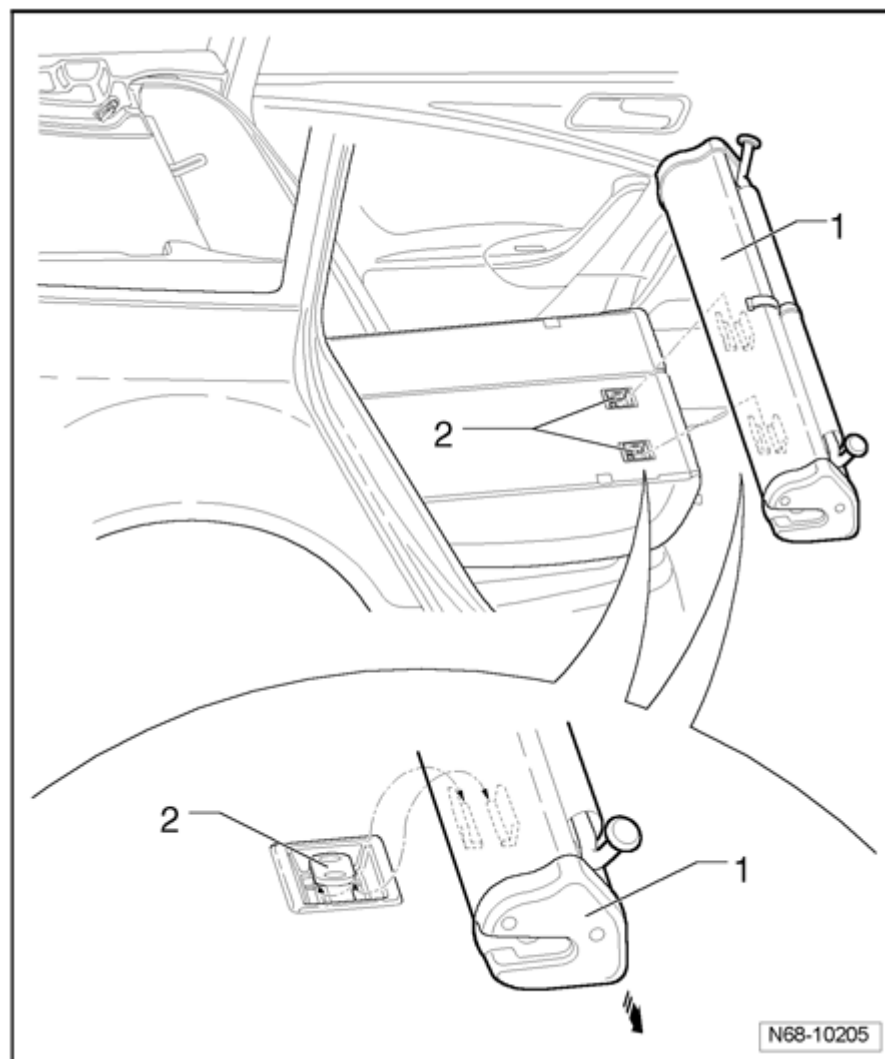
- *Before installation, mounting elements of rear shelf must be checked for damage and replaced if necessary.*

Screen separator wall

Screen separator wall, removing and installing

Removing

- Fold backrest of rear seat bench forward and open right rear door.



- Pull screen separator wall - **1** - outward - **arrow** - out of mounts - **2** - in right rear backrest.

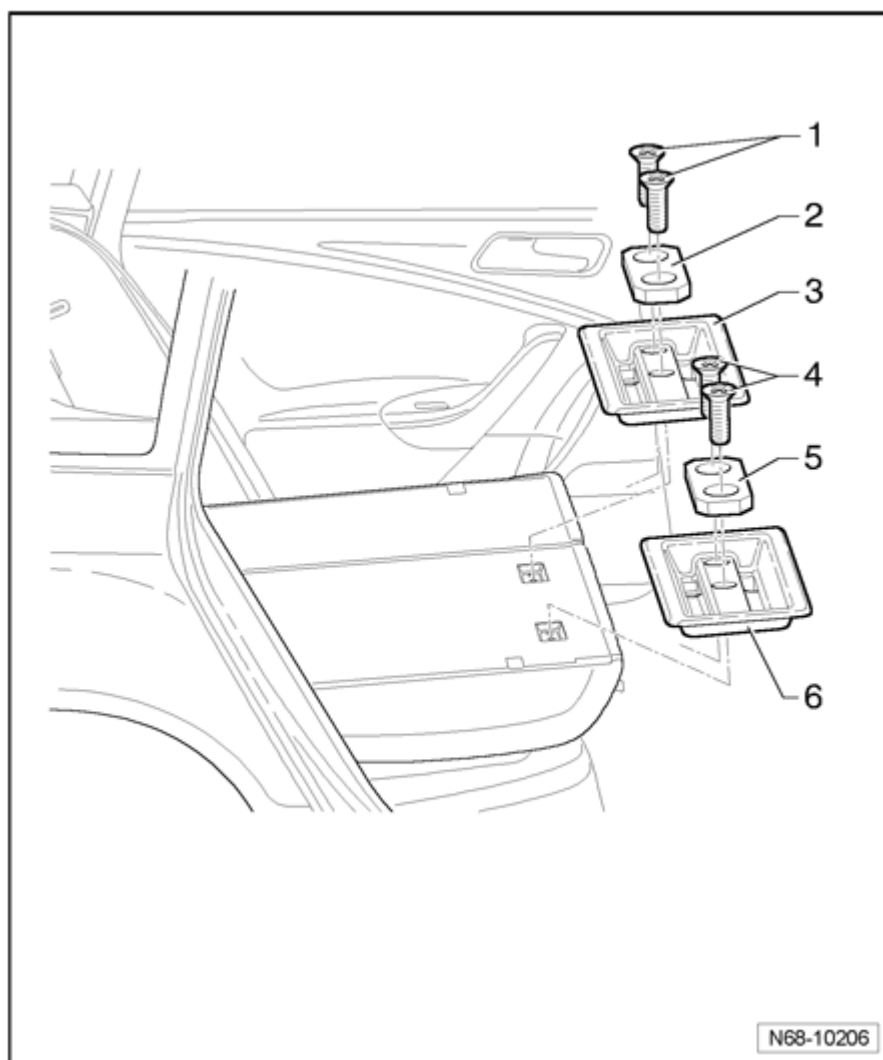
Installing

- Installation is performed in the reverse order of removal.

Mounting components (screen separator wall), removing and installing

Removing

- Remove screen separator wall ⇒ [68-6, Screen separator wall, removing and installing](#)
- Remove the two bolts - **1** - (8 Nm).
- Remove insert - **2** - and mounting component - **3** - from right backrest.
- Remove the two bolts - **4** - (8 Nm).



- Remove insert - **5** - and mounting component - **6** - from right backrest.

Installing

- Installation is performed in the reverse order of removal.