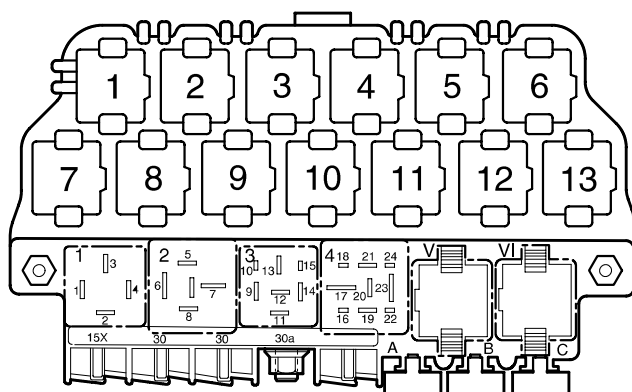


## Anti-lock brake system (ABS), Anti-lock brake system (ABS) with electronic differential lock (EDL) and anti-slip control (ASC),

from September 1998

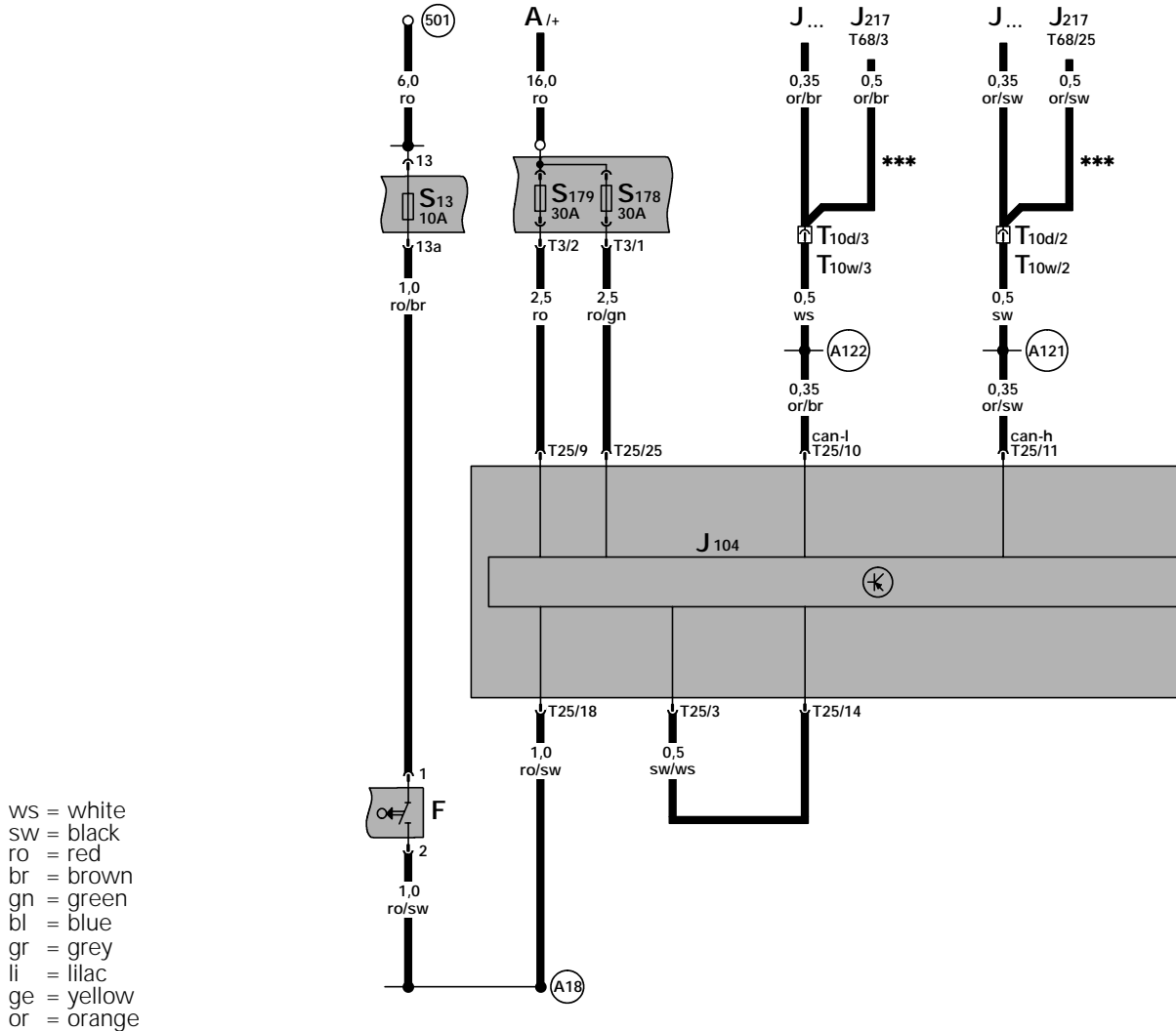
Deviate relay location and fuseplacements as well as the locations of multiple connectors see section "component locations".



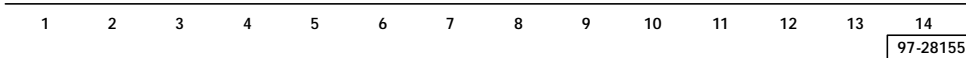
97-14163

### Fuse colors

- 30 A - green
- 25 A - white
- 20 A - yellow
- 15 A - blue
- 10 A - red
- 7,5 A - brown
- 5 A - beige
- 3 A - violet



ws = white  
 sw = black  
 ro = red  
 br = brown  
 gn = green  
 bl = blue  
 gr = grey  
 li = lilac  
 ge = yellow  
 or = orange

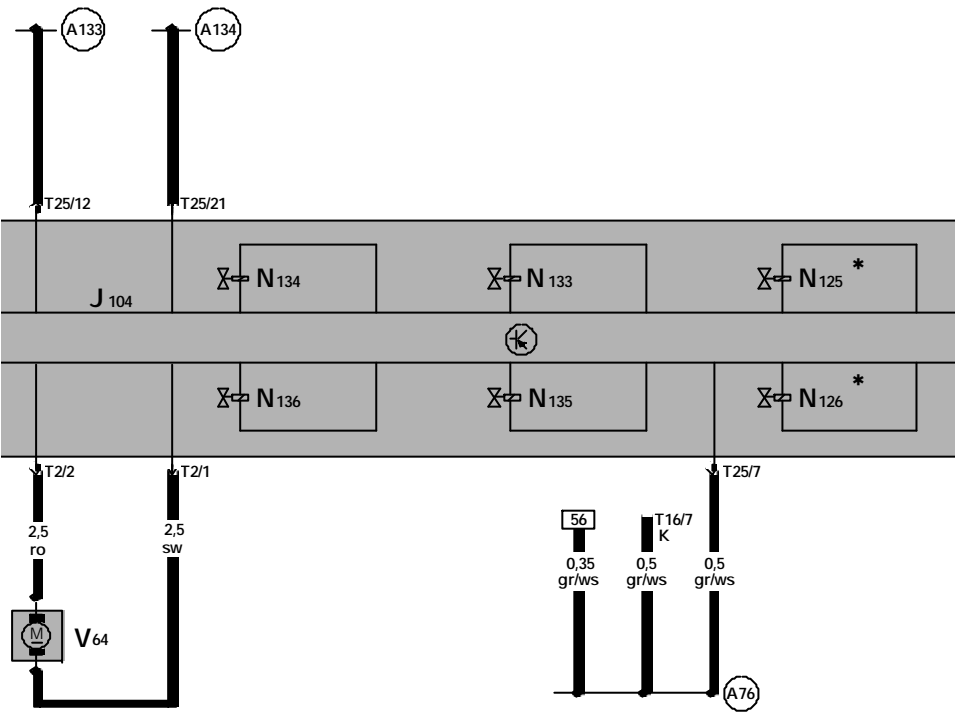


- A - Battery
- F - Brake Light Switch
- J104 - ABS Control Module (w/EDL), in engine compartment, left
- J217 - Transmission Control Module (TCM), in plenum chamber, center\*\*\*
- J... - Engine Control Module (ECM)
- S13 - Fuse 13 in fuse holder
- S178 - Fuse -6- (30) in fuse bracket/battery
- S179 - Fuse -7- (30) in fuse bracket/battery
- T3 - 3-Pin Connector
- T10d - 10-Pin Connector, green, in protective housing for connectors, in plenum chamber, left (through April 1999)
- T10w - 10-Pin Connector, white, in protective housing for connectors, in plenum chamber, left (beginning May 1999)

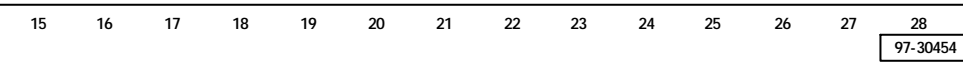
- T25 - 25-Pin Connector
- T68 - 68-Pin Connector\*\*\*

- (501) - Threaded connection -2- (30) on the relay plate
- (A18) - Wire connection (54), in instrument panel wiring harness
- (A121) - Connection (high bus) in instrument panel wiring harness
- (A122) - Connection (low bus) in instrument panel wiring harness

\*\*\* - Automatic transmission only

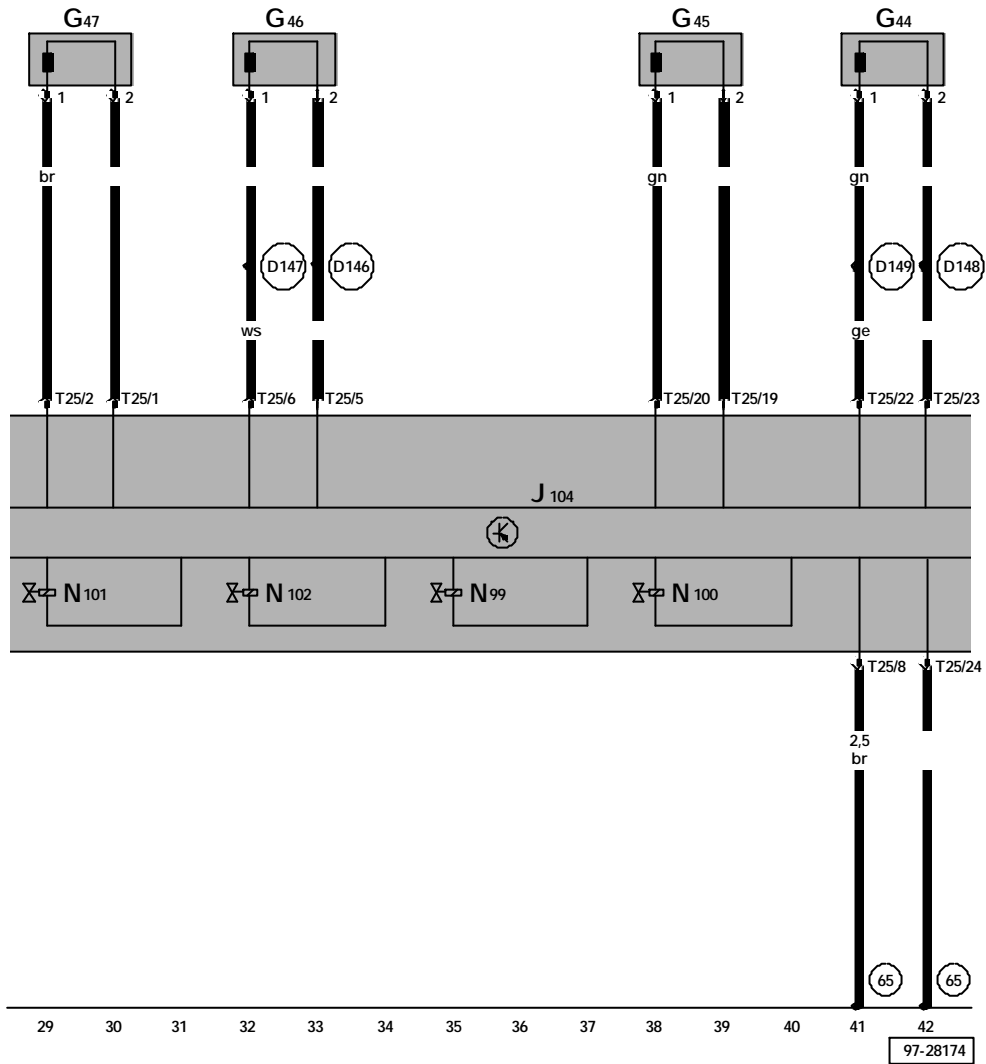


ws = white  
 sw = black  
 ro = red  
 br = brown  
 gn = green  
 bl = blue  
 gr = grey  
 li = lilac  
 ge = yellow  
 or = orange



- J104 - ABS Control Module (w/EDL), in engine compartment, left
- N125- Differential lock valve 1\*
- N126- Differential Lock Valve 2\*
- N133- Right Rear ABS Inlet Valve
- N134- Left Rear ABS Inlet Valve
- N135- Right Rear ABS Outlet Valve
- N136- Left Rear ABS Outlet Valve
- T2 - Double Connector
- T16 - Data Link Connector (DLC), below instrument panel, left
- T25 - 25-Pin Connector
- V64 - ABS Hydraulic Pump
- (A76) - Connector (K-diagnosis wire) in instrument panel wiring harness

- (A133) - Connection (ABS-signal left) in instrument panel wiring harness
- (A134) - Connection (ABS-signal right) in instrument panel wiring harness
- \* - Vehicles with Electronic Differential Lock (EDL) or Anti-Slip Control (ASC) only

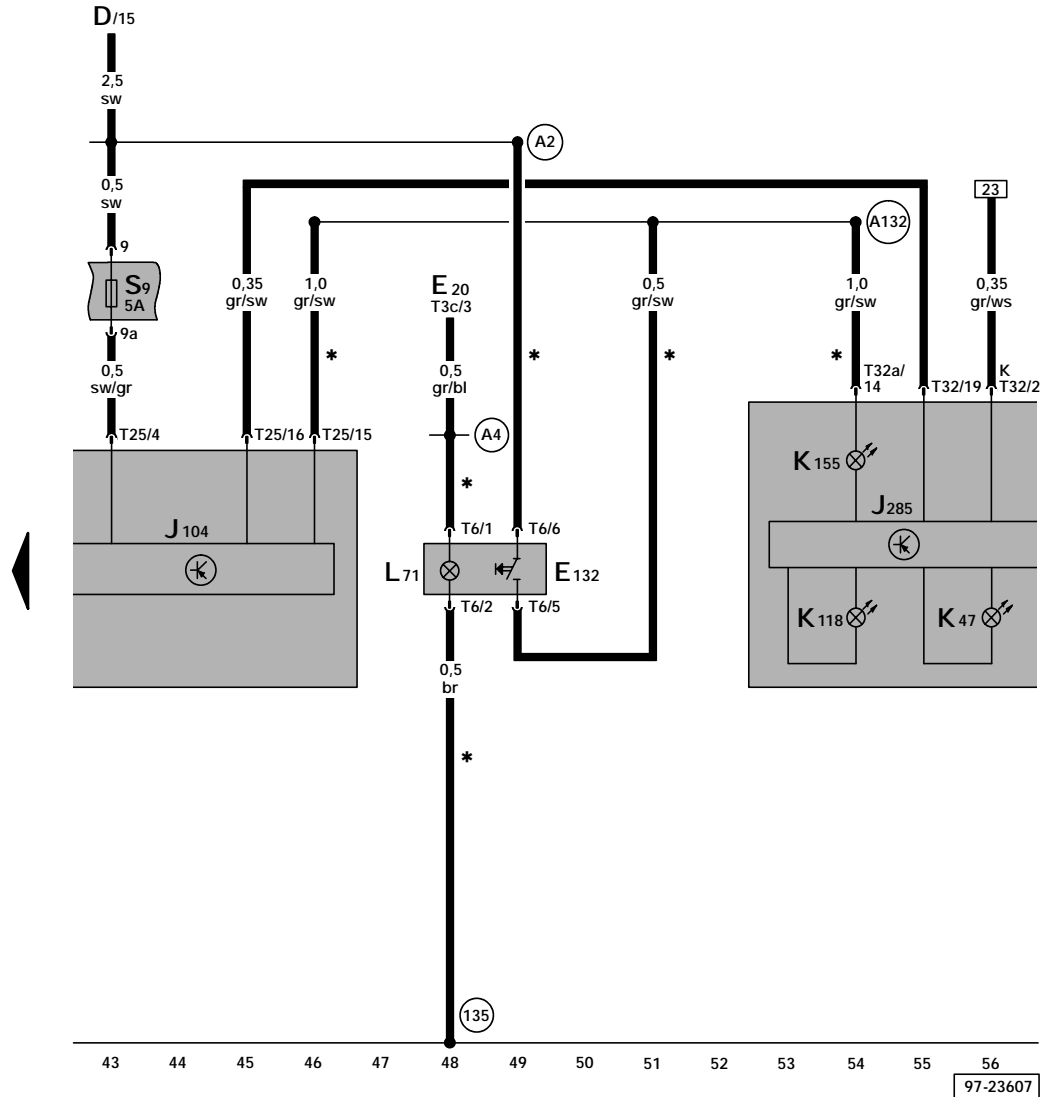


ws = white  
 sw = black  
 ro = red  
 br = brown  
 gn = green  
 bl = blue  
 gr = grey  
 li = lilac  
 ge = yellow  
 or = orange

- G44 - Right Rear ABS Wheel Speed Sensor
- G45 - Right Front ABS Wheel Speed Sensor
- G46 - Left Rear ABS Wheel Speed Sensor
- G47 - Left Front ABS Wheel Speed Sensor
- J104 - ABS Control Module (w/EDL), in engine compartment, left
- N99 - Right Front ABS Inlet Valve
- N100- Right Front ABS Outlet Valve
- N101 - Left Front ABS Inlet Valve
- N102- Left Front ABS Outlet Valve
- T25 - 25-Pin Connector

- (D147) - Connector (speed sensor rear, left -), in wiring harness engine compartment
- (D148) - Connector (speed sensor rear, right +), in wiring harness engine compartment
- (D149) - Connector (speed sensor rear, right -), in wiring harness engine compartment

- (65) - Ground connection, on chassis side member, front left
- (D146) - Connector (speed sensor rear, left +), in wiring harness engine compartment



ws = white  
 sw = black  
 ro = red  
 br = brown  
 gn = green  
 bl = blue  
 gr = grey  
 li = lilac  
 ge = yellow

- D - Ignition/Starter Switch
- E20 - Instrument Panel Light Dimmer Switch
- E132 - Anti-Slip Control Switch\*
- J104 - ABS Control Module (w/EDL), in engine compartment, left
- J285 - Control module with indicator unit in instrument panel insert
- K47 - ABS Warning Light
- K118 - Warning light for brake system
- K155 - Warning light for Anti-Slip Control (ASC)\*
- L71 - Anti-Slip Control Switch Illumination\*
- S9 - Fuse 9 in fuse holder
- T3c - 3-Pin Connector
- T6 - 6-Pin Connector\*
- T25 - 25-Pin Connector
- T32 - 32-Pin Connector, blue

T32a - 32-Pin Connector, green

- (135) - Ground connection -2-, in instrument panel wiring harness
- (A2) - Plus connection (15), in instrument panel wiring harness
- (A4) - Plus connection (58b), in instrument panel wiring harness
- (A132) - Connection (ASC), in instrument panel wiring harness

\* - Vehicles with Anti-Slip Control (ASC) only