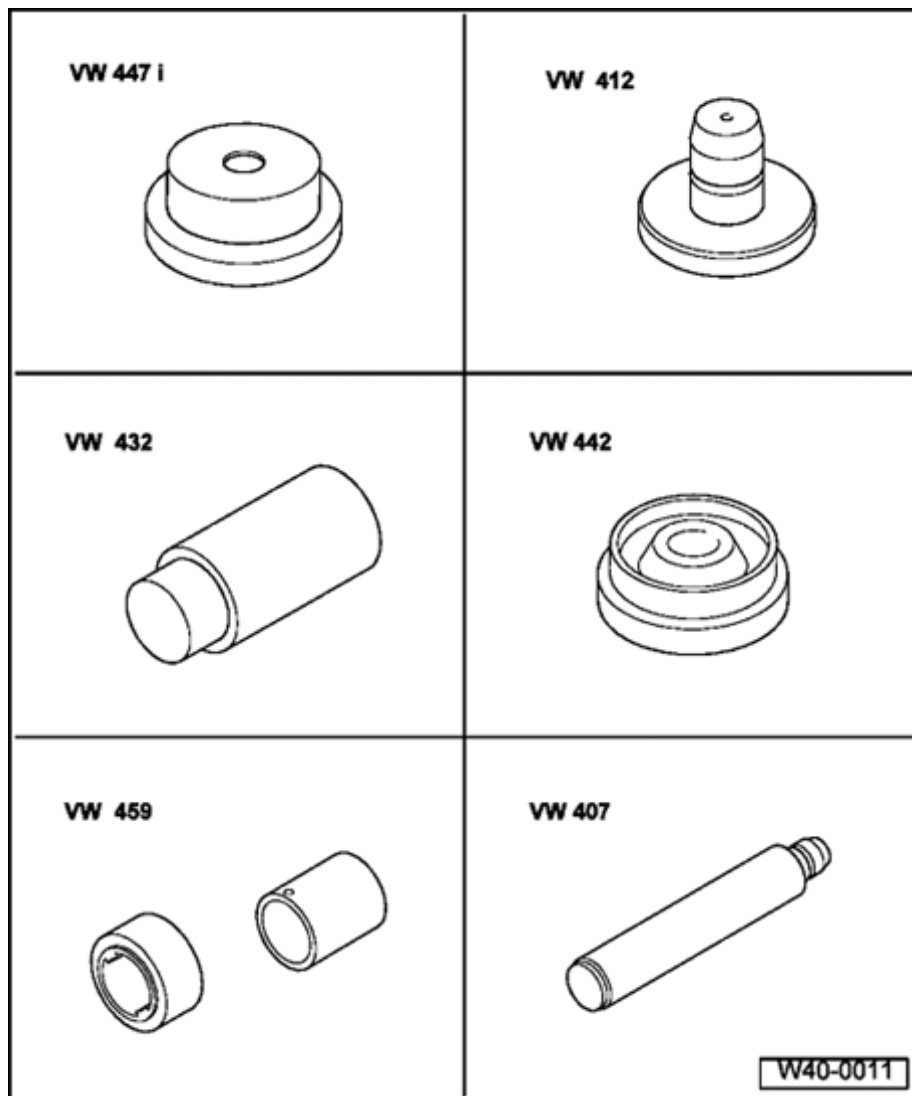


III - Wheel bearing, servicing

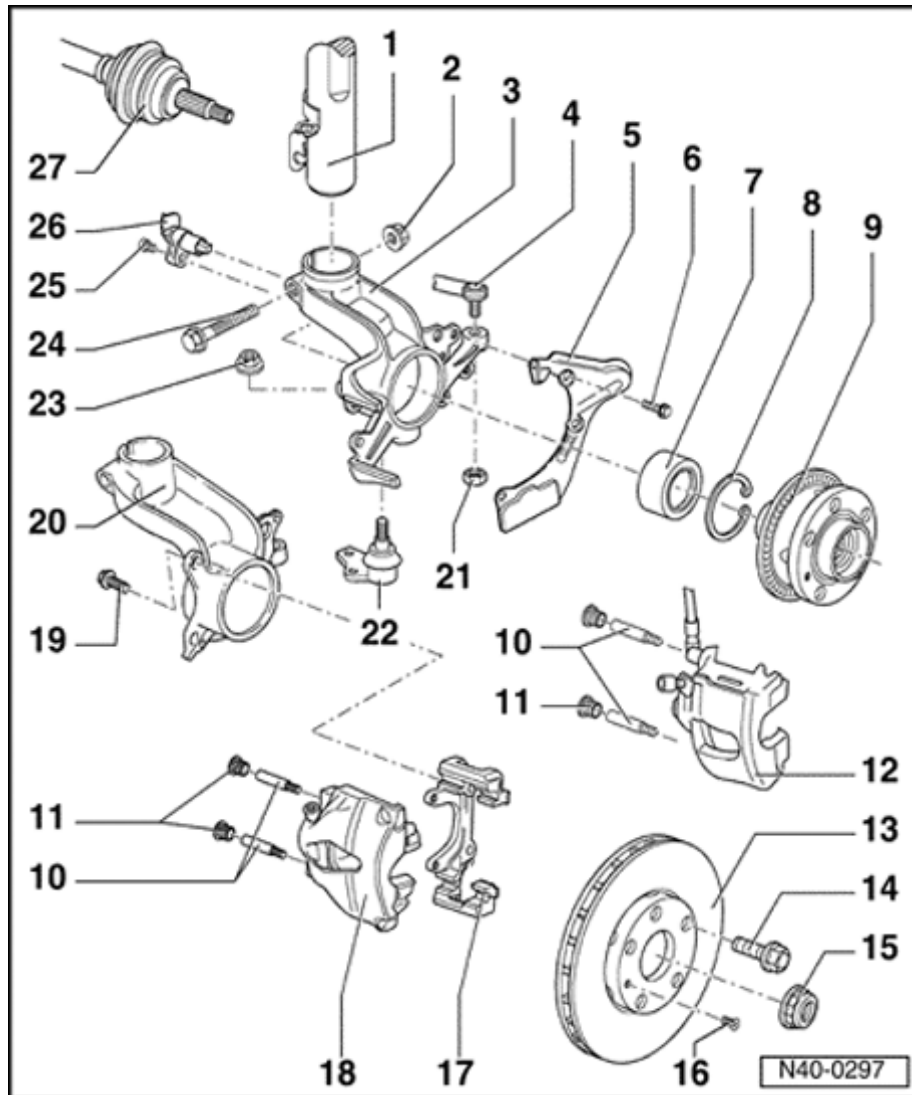
Special tools and equipment

- ◆ VW 408A Press tool
- ◆ 40-105 Thrust plate
- ◆ 3252 Box wrench 46 mm AF
- ◆ 3253/1 Installation tool
- ◆ VW 401 Press plate
- ◆ 3423 Puller



Special tools and equipment

- ◆ VW 447i Thrust plate
- ◆ VW 412 Press tool
- ◆ VW 432 Press piece
- ◆ VW 442 Press piece
- ◆ VW 459/2 Installing and removing tool
- ◆ VW 407 Press tool



Note:

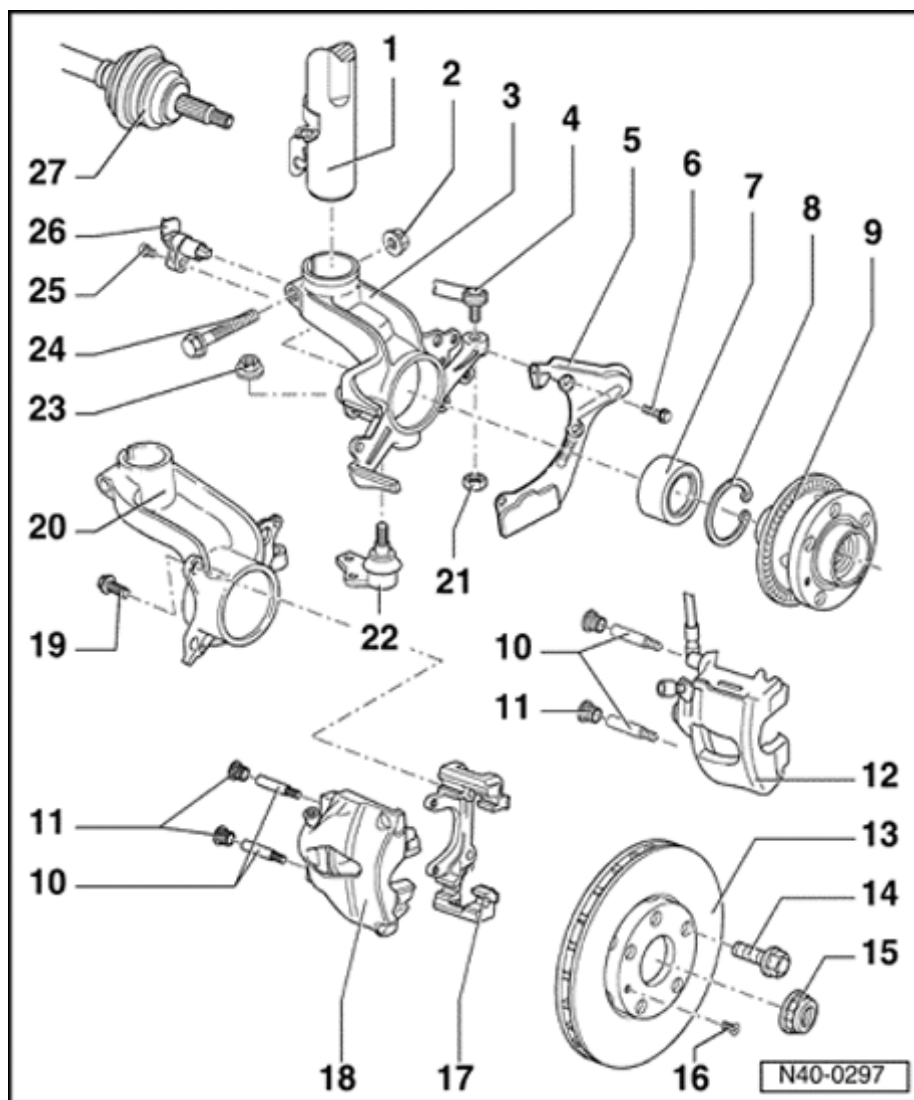
- ◆ If vehicle must be moved after removing axle shaft, install outer joint and tighten to 50 Nm (37 ft lb) to avoid damaging wheel bearing.
- ◆ Do not weld and/or straighten with load on suspension components.
- ◆ Always replace self-locking nuts.
- ◆ Always replace corroded nuts/bolts.

1 - Suspension strut

- ◆ Servicing ⇒ [Page 40-43](#)

2 - Self-locking nut

- ◆ 60 Nm (44 ft lb) and turn 90° further
- ◆ Never less than 90°
- ◆ Turning angle tolerance 90° to 120°
- ◆ Always replace



3 - Wheel bearing housing

For vehicles:

- ◆ With gasoline engines up to and including 85 kW (115 Hp)
- ◆ With TDI engine

4 - Tie rod end

5 - Splash plate

6 - Bolt

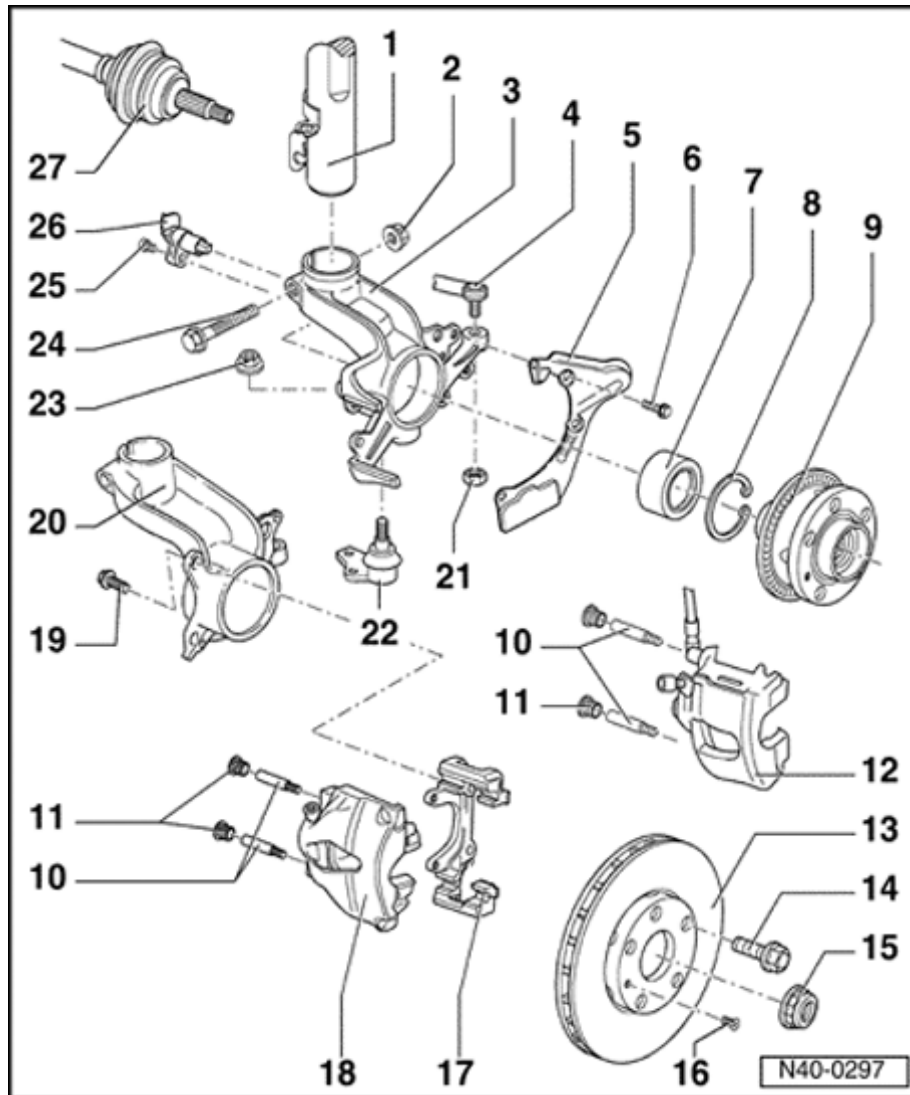
- ◆ 10 Nm (89 in. lb)

7 - Wheel bearing

- ◆ Pressing out ⇒ Fig. ⇒ [4](#)
- ◆ Pressing in ⇒ Fig. ⇒ [5](#)
- ◆ Removing and installing when wheel bearing housing is installed ⇒ [Page 40-36](#)
- ◆ Always replace, (bearing is destroyed when pressed out)

8 - Circlip

- ◆ Ensure circlip is correctly seated



9 - Wheel hub with ABS speed sensor rotor

- ◆ Rotor is welded to wheel hub
- ◆ Check rotor lateral run-out;

⇒ [Repair Manual, Brake System, Repair Group 45](#)

- ◆ Removing and installing with wheel bearing housing installed ⇒ [Page 40-36](#)

10 - Guide pins

- ◆ 28 Nm (21 ft lb)

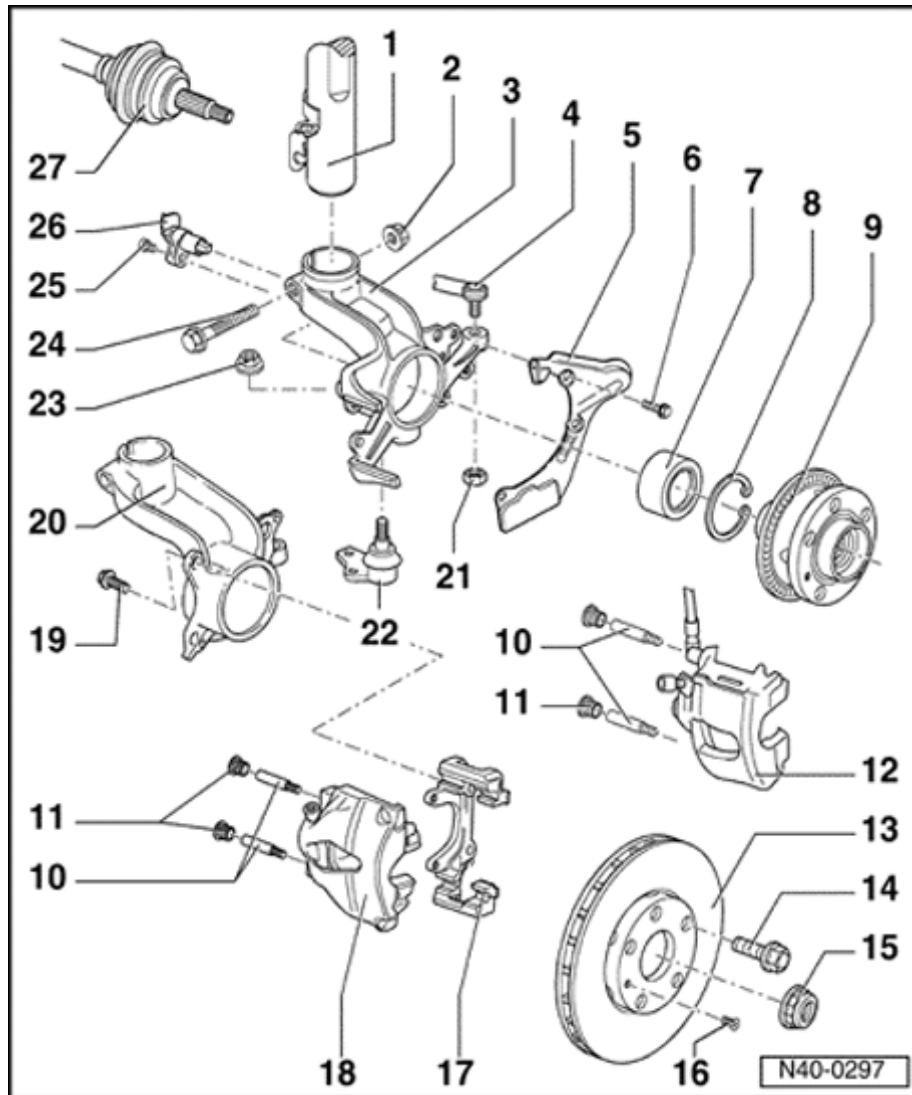
11 - Protective cap

12 - Brake caliper

- ◆ With 85 kW (115 Hp) gasoline engine
- ◆ With TDI engine
- ◆ Do not loosen brake hose when working on front suspension
- ◆ Suspend with wire or similar, do not allow to hang by hose
- ◆ Servicing

⇒ [Repair Manual, Brake System, Repair Group 46](#)

⇒ [Repair Manual, Brake System, Repair Group 47](#)



13 - Ventilated brake disc

14 - Wheel bolt

- ◆ 120 Nm (89 ft lb)

15 - Self-locking 12-point nut

- ◆ Tightening ⇒ [Page 40-55](#)
- ◆ Always replace

16 - Phillips screw

- ◆ 4 Nm (35 in. lb)

17 - Brake carrier

18 - Brake caliper

For vehicles:

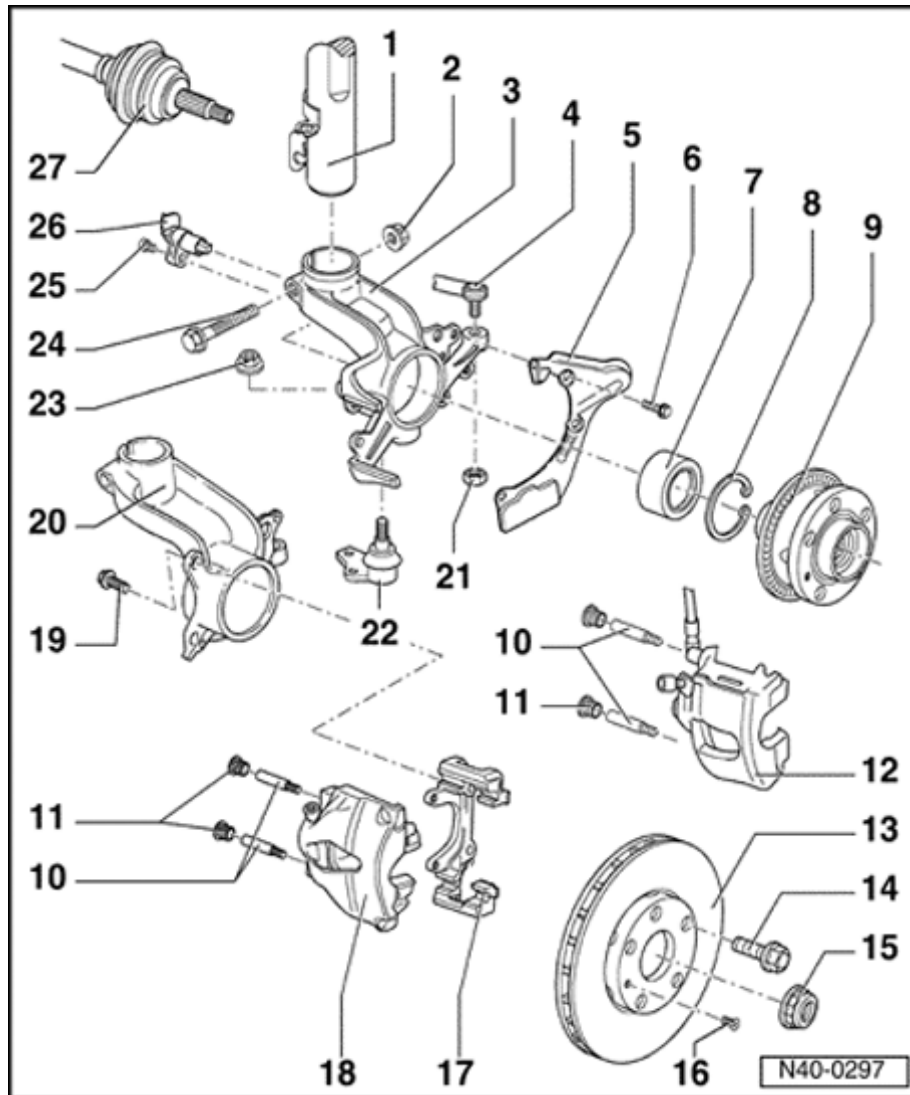
- ◆ With gasoline engines from 130 kW (175 Hp)
- ◆ Do not loosen brake hose when working on front suspension
- ◆ Hang up with wire or similar
- ◆ Servicing

⇒ [Repair Manual, Brake System, Repair Group 46](#)

⇒ [Repair Manual, Brake System, Repair Group 47](#)

19 - Self-locking combi bolt

- ◆ 125 Nm (92 ft lb)
- ◆ Clean under side of bolt head to ensure correct torque value



20 - Wheel bearing housing

- ◆ With gasoline engine 130 kW (175 Hp)

21 - Self-locking nut

- ◆ 45 Nm (33 ft lb)

22 - Ball joint

- ◆ Removing and installing ⇒ [Page 40-10](#)

23 - Self-locking nut

- ◆ 45 Nm (33 ft lb)

24 - Bolt

- ◆ Always replace

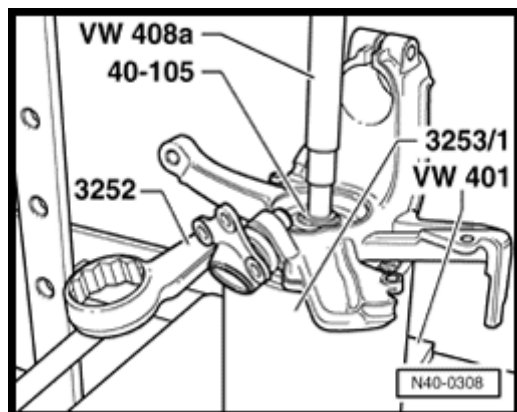
25 - Socket head bolt

- ◆ 10 Nm (89 in. lb)

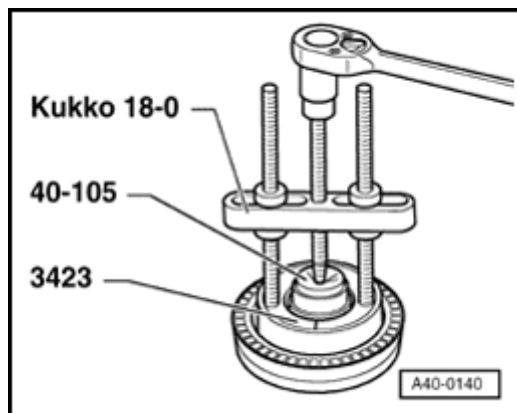
26 - Speed sensor

27 - Axle shaft

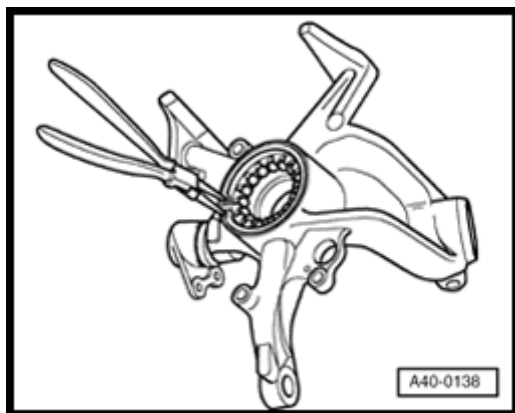
- ◆ Pulling axle shaft from wheel hub and pressing in
⇒ Removing and installing axle shafts ⇒ [Page 40-51](#)



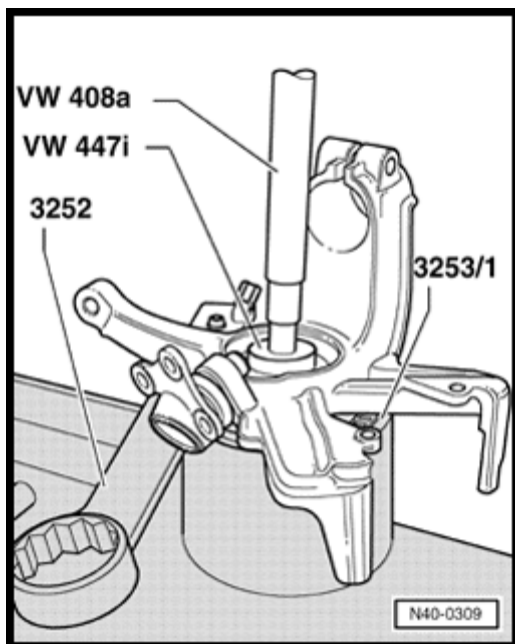
A Fig. 1 Hub, pressing out of wheel bearing housing



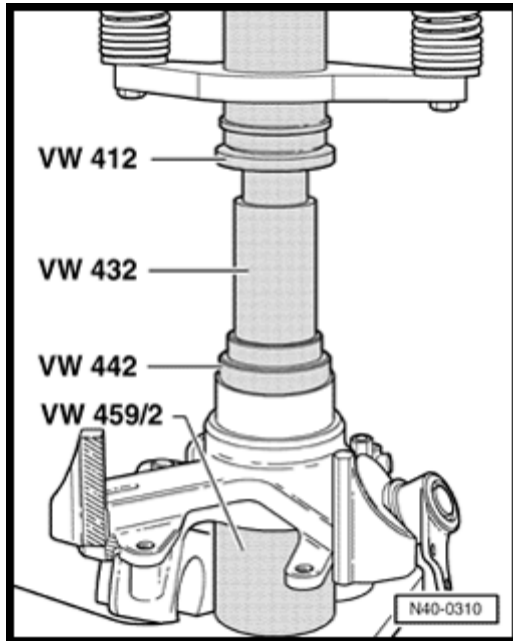
A Fig. 2 Hub, pulling bearing race out



A Fig. 3 Circlip, removing



A Fig. 4 Wheel bearing, pressing out of wheel bearing housing



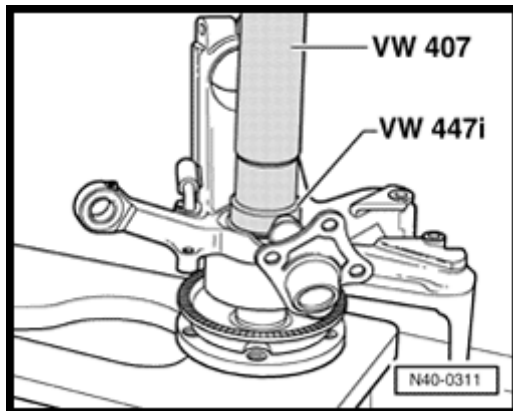
A

Fig. 5 Wheel bearing, pressing into wheel bearing housing

- Lubricate wheel bearing housing with N 052 723 00 before bearing installation

Use lubrication pouch from repair kit.

- Install circlip.



A

Fig. 6 Hub, pressing into wheel bearing housing